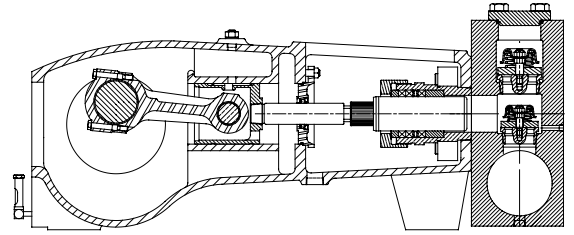


TRIPLEX PISTON/PLUNGER PUMP

APLEX SERIES SC-230 (H)


INTERMITTENT DUTY ONLY

NO. OF PISTONS/PLUNGERS	3
MAXIMUM RATED SPEED	450 rpm
STROKE LENGTH	4.50 in. (114.3 mm)
MAXIMUM RATED POWER	310 hp (231.0 kW)
MAXIMUM ROD LOAD	18,320 lbs. (81.34 kN)
WEIGHT SC-230	2680 lbs.
WEIGHT SC-230H	2935 lbs.

SC-230 ENGLISH UNITS

PLUNGER SIZE IN.	STUFFING BOX BORE IN.	MAX PSI	*GALLON PER/ REV.	250 RPM US GPM	300 RPM US GPM	350 RPM US GPM	400 RPM US GPM	450 RPM US GPM
4.500	PISTON	1152	0.929	232.4	278.8	325.3	371.8	418.3
4.250	PISTON	1291	0.829	207.3	248.7	290.2	331.6	373.1
4.000	5.000	1458	0.734	183.6	220.3	257.0	293.8	330.5
3.875	5.000	1553	0.689	172.3	206.8	241.2	275.7	310.1
3.750	5.000	1659	0.645	161.4	193.6	225.9	258.2	290.5
3.625	5.000	1775	0.603	150.8	180.9	211.1	241.3	271.4
3.500	4.500	1904	0.562	140.6	168.7	196.8	224.9	253.0
3.375	4.500	2048	0.523	130.7	156.8	183.0	209.1	235.3
3.250	4.500	2208	0.485	121.2	145.4	169.7	193.9	218.2
3.125	4.000	2388	0.448	112.1	134.5	156.9	179.3	201.7
3.000	4.000	2591	0.413	103.3	123.9	144.6	165.2	185.9
2.875	4.000	2821	0.379	94.8	113.8	132.8	151.8	170.7
2.750	3.500	3084	0.347	86.8	104.1	121.5	138.8	156.2
hp REQUIRED @ RPM				173.6	208.3	243.0	277.8	310.0

SC-230 METRIC UNIT

PLUNGER SIZE MM	STUFFING BOX BORE MM	MAX PRESS. BAR	*LITER PER/ REV	250 RPM LPM	300 RPM LPM	350 RPM LPM	400 RPM LPM	450 RPM LPM
114.3	PISTON	79.4	3.519	879.6	1055.6	1231.5	1407.4	1583.3
108.0	PISTON	89.0	3.139	784.6	941.6	1098.5	1255.4	1412.3
101.6	127.0	100.5	2.780	695.0	834.0	973.0	1112.0	1251.0
98.4	127.0	107.1	2.609	652.2	782.7	913.1	1043.6	1174.0
95.3	127.0	114.4	2.444	610.9	733.0	855.2	977.4	1099.6
92.0	127.0	122.4	2.283	570.9	685.0	799.2	913.4	1027.5
88.9	114.3	131.3	2.129	532.1	638.5	745.0	851.4	957.8
85.7	114.3	141.2	1.978	494.5	593.4	692.3	791.2	890.1
82.6	114.3	152.2	1.835	458.8	550.5	642.3	734.0	825.8
79.4	101.6	164.6	1.697	424.2	509.0	593.8	678.6	763.5
76.2	101.6	178.6	1.564	391.0	469.1	547.3	625.5	703.7
73.0	101.6	194.5	1.436	359.0	430.9	502.7	574.5	646.3
69.9	88.9	212.6	1.314	328.5	394.2	459.9	525.6	591.3
kW REQUIRED @ RPM				129.5	155.3	181.2	207.2	231.2

SC-230H ENGLISH UNITS

PLUNGER SIZE IN.	STUFFING BOX BORE IN.	MAX PSI	*GALLON PER/ REV.	250 RPM US GPM	300 RPM US GPM	350 RPM US GPM	400 RPM US GPM	450 RPM US GPM
2.500	3.500	3732	0.2868	71.7	86.0	100.4	144.7	129.1
2.375	3.000	4135	0.2588	64.7	77.6	90.6	103.5	116.5
2.250	3.000	4607	0.2323	58.1	69.7	81.3	92.9	104.5
2.125	3.000	5165	0.2072	51.8	62.2	72.5	82.9	93.2
2.000	3.000	5831	0.1835	45.9	55.1	64.2	73.4	82.6
hp REQUIRED @ RPM				173	208	243	277	310

SC-230H METRIC UNIT

PLUNGER SIZE MM	STUFFING BOX BORE MM	MAX PRESS. BAR	*LITER PER/ REV.	250 RPM LPM	300 RPM LPM	350 RPM LPM	400 RPM LPM	450 RPM LPM
63.5	88.9	257.4	1.0855	271.4	325.6	379.9	434.2	488.5
60.3	76.2	285.2	0.9795	244.9	293.8	342.8	391.8	440.8
57.1	76.2	317.7	0.8792	219.8	263.8	307.7	351.7	395.6
53.9	76.2	356.2	0.7842	196.0	235.3	274.5	313.7	352.9
50.8	76.2	402.1	0.6945	173.6	208.4	243.1	277.8	312.5
kW REQUIRED @ RPM				129	155	181	206	231

*Displacement based on 100% Volumetric Efficiency

$$I_{hp} = \frac{USGPM \times (\text{Discharge psig} - 1/2 \text{ Suction psig})}{1542}$$

$$PUMP \text{ RPM} = \frac{USGPM \text{ Desired}}{USG \text{ per Revolution of Selected Plunger}}$$

Power based on 90% Mechanical Efficiency

$$I_{kW} = \frac{M^3/HR \times (\text{Discharge Bar} - 1/2 \text{ Suction Bar})}{32.4}$$

$$PUMP \text{ RPM} = \frac{M^3/HR \text{ Desired}}{M^3 \text{ per Revolution of Selected Plunger}}$$

ENGINEERING DATA

POWER END ENGINEERING DATA

Table with 2 columns: Specification and Value. Includes Max. Input Power @ Speed (310 hp @ 450 rpm), Rated Plunger Load (18,320 lbs.), Maximum Speed (450 rpm), Minimum Speed (100 rpm), Oil Capacity (22 U.S. Qts.), Power End Oiling System (Splash and Scoop), Power Frame, One-Piece (Cast Iron), Crosshead, Full Cylindrical (Cast Iron), Crosshead, Dia. x Length (6 3/4" x 7 5/8" in.), Crankshaft (AISI 4140 Steel, Nitrided), Crankshaft Diameters: At Tapered Roller Bearings (4-3/4 in.), At Crankpin Bearings, Dia. x Length (4-1/2 x 3-3/4 in.), Crosshead (Wrist) Pin, Case-Hardened and Ground (AISI 8620), Main Bearings, Tapered Roller (Timken®), Crankpin Bearings, Precision Automotive (Babbitt-Lined), Extension (Pony) Rod (17-4 PH S.ST.), Connecting Rod, Automotive Type (Ductile Iron), Average Crosshead Speed @ 450 rpm (338 fpm).

LIQUID END ENGINEERING DATA

Table with 2 columns: Specification and Value. Includes Max. Continuous Working Pressure SC-230 (3,084 psi), SC-230H (5,000 psi), Hydrostatic Test SC-230 (4,626 psi), SC-230H (7,000 psi), Liquid End Materials, A.S.T.M.: Carbon Steel Block (Various Grades), Stainless Steel Block (Various Grades), Piston Type SC-230 (Rubber), Liners (Hardened Steel), Plunger Type Rokide® (Chromium Oxide-Coated) (Tungsten Carbide, Ceramic and other types also available), Stuffing boxes, Field-Removable and Replaceable (Dependant on Fluid End Material), Packing Types Available: Gland-loaded, Non-Adjustable (Style 838), Spring-loaded Aramid Fiber (Style 140, 141, 8921K), Spring-loaded, cup-type (Style 120X), Valve Cover and Cyl. Head Plugs (Dependant on Fluid End Material), Seals, Stuffing Boxes, Valve Covers (Nitrile), Valve Type Disc (17-4PH SST or Acetal), Abrasion Resistant, Wing Guided (17-4PH SST), Valve Spring Material (Inconel®), Valve Seat, Liquid Passage Area SC-230 (6.5 sq.in.), SC-230H (2.3 sq.in.), Avg. Liquid Velocity @ 450 RPM: thru Valves SC-230 (10.8 fps), SC-230H (6.7 fps), thru Suction Manifold SC-230 (3.7 fps), SC-230H (3.9 fps), thru Discharge Manifold SC-230 (15.0 fps), SC-230H (16.0 fps).

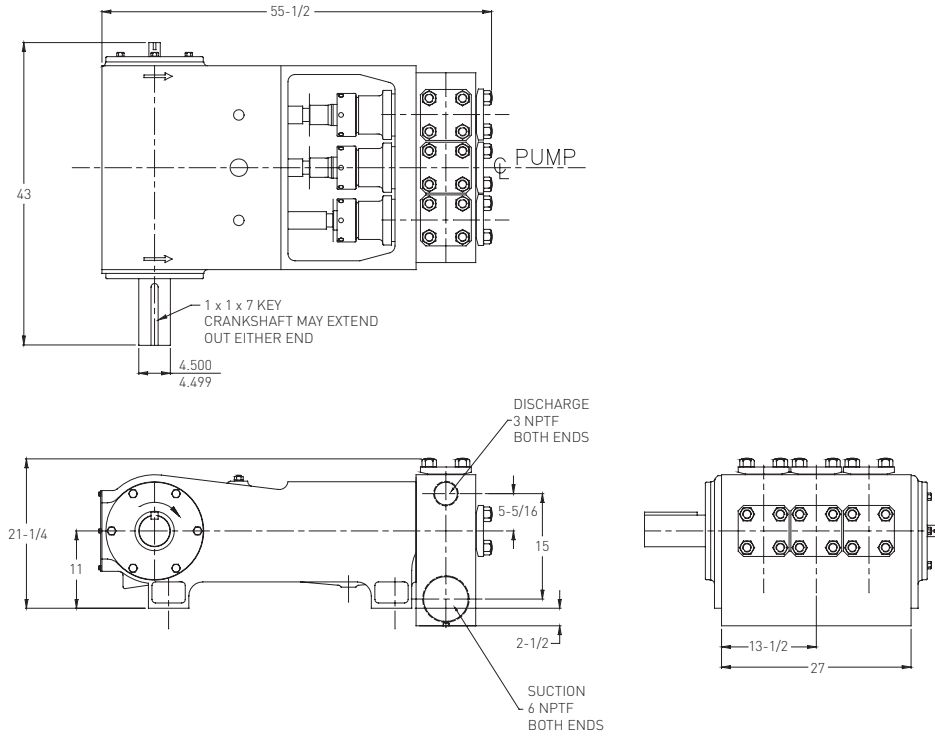
All drawings and specifications subject to change without notice.

MYERS TRIPLEX PISTON/PLUNGER PUMP

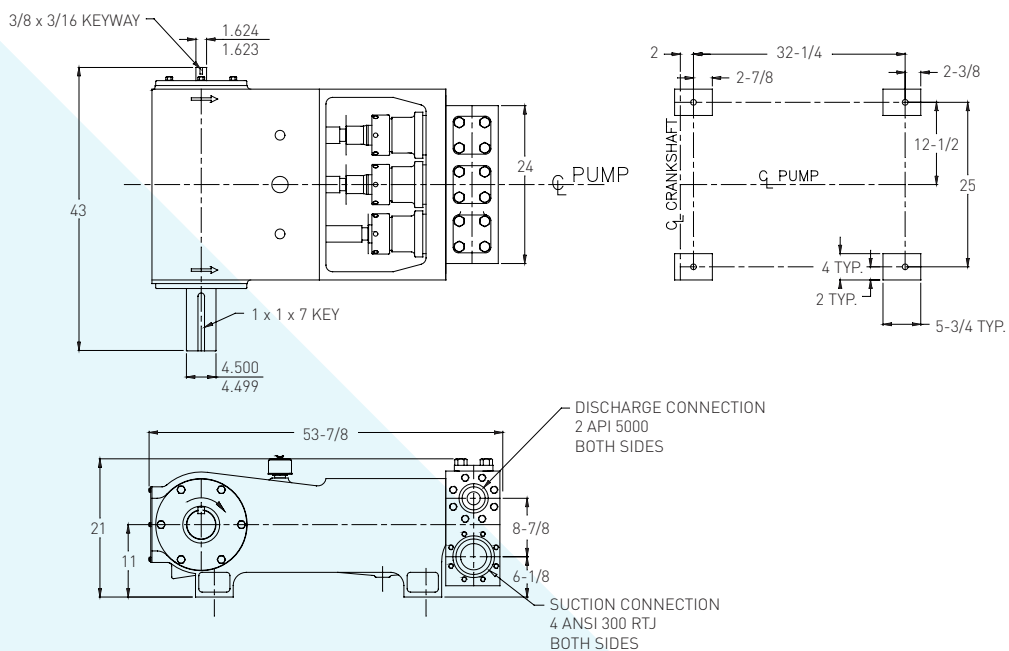
DIMENSIONAL DATA

Measurements shown in inches.

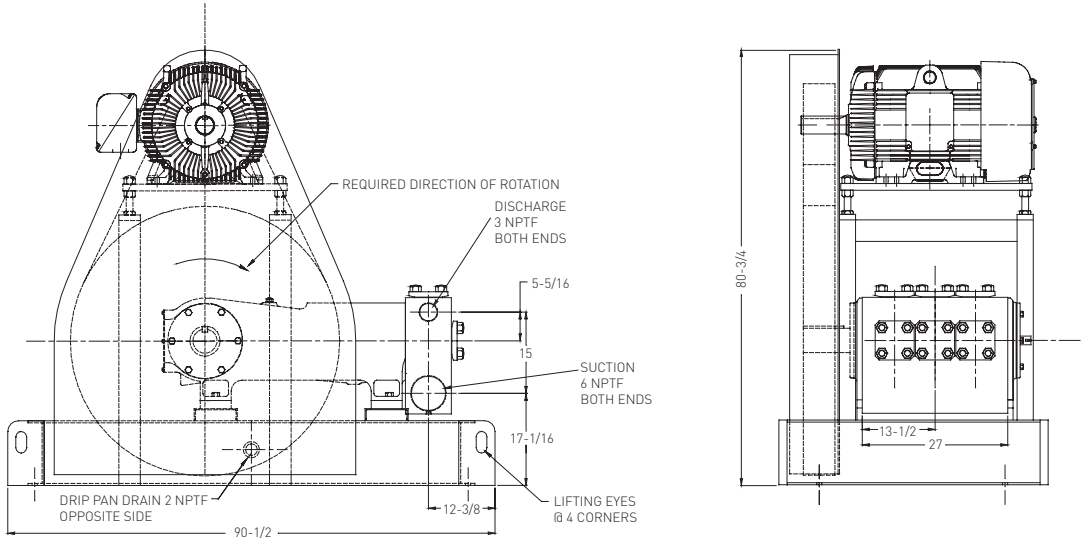
SC-230 TRIPLEX PUMP



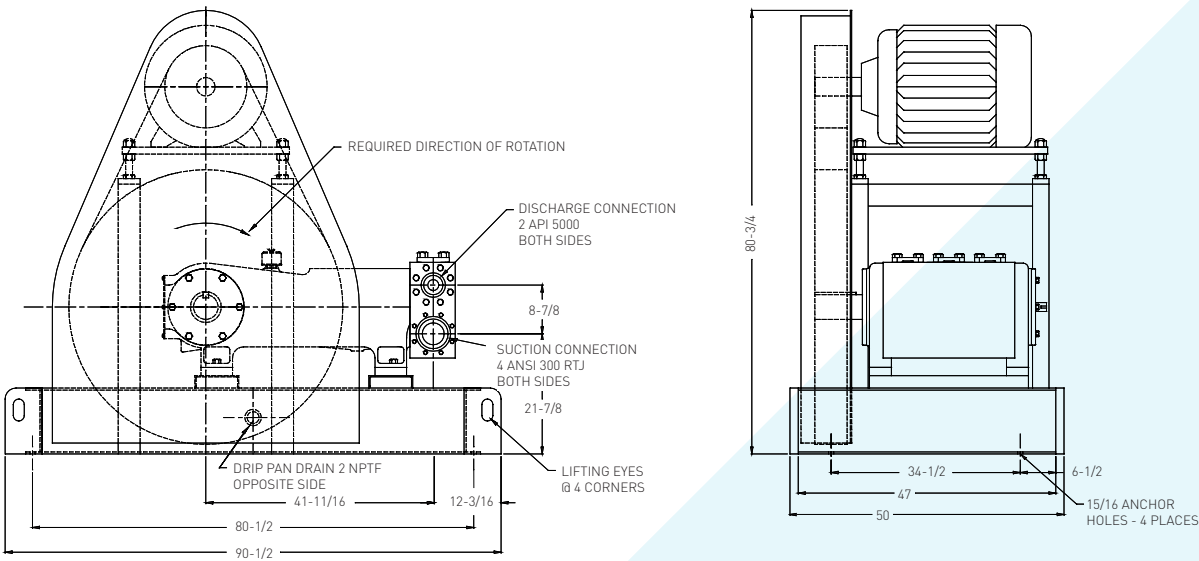
SC-230H TRIPLEX PUMP



SC-230 TRIPLEX PUMP



SC-230H TRIPLEX PUMP





**1101 Myers Parkway,
Ashland, OH 44805, USA
Ph: 855.274.8948
Fx: 800.426.8947**

**490 Pinebush Road, Unit 4,
Cambridge, Ontario N1T 0A5, Canada
Ph: 800.363.7867**

pentair.com

All indicated Pentair trademarks and logos are property of Pentair. Third party registered and unregistered trademarks and logos are the property of their respective owners. Because we are continuously improving our products and services, Pentair reserves the right to change specifications without prior notice. Pentair is an equal opportunity employer.

Inconel® is a registered trademark of the Special Metals family of companies.

Timken® is a registered trademark of The Timken Company.

Rokide® is a registered trademark of Saint-Gobain Abrasives, Inc.

©2021 Pentair. All Rights Reserved.

MA3013 (10-15-21)