

HYDRAULICALLY DRIVEN COBALT CENTRIFUGAL PUMP

93HPS SERIES

The 93HPS Series Hydraulically Driven Cobalt Centrifugal Pump provides dry-run protection for reduced downtime, greater reliability for longer pump life, and consistent pump output from low to high rates.

APPLICATIONS

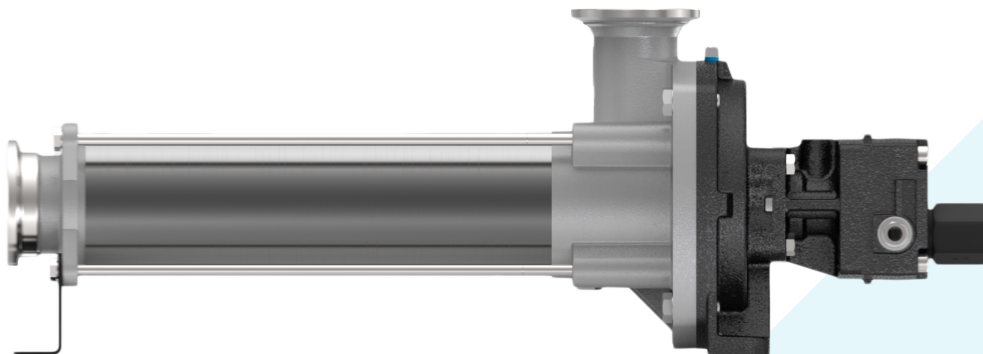
Designed for agricultural and industrial spraying and transfer of a variety of fluids, including water, insecticides, herbicides, wettable powders, emulsives, and liquid fertilizers.

FEATURES

- ◆ Versatile multistage centrifugal pump provides consistent output from low to high rates.
- ◆ Mechanical seal utilizes silicon carbide materials for superior abrasive handling.
- ◆ Stainless steel and engineered polymer components offer corrosion and abrasion resistance.
- ◆ Extended service life results in minimal maintenance and total cost of ownership.
- ◆ Prevent dry run failures with Cobalt Series wet seal.

SPECIFICATIONS

- ◆ **Max Flow Rate:** 93HPS114-M05 = 57 GPM (216 LPM); 93HPS114-M05-SP = 47 GPM (178 LPM)
- ◆ **Max Pressure:** 93HPS114-M05 = 200 PSI (13.7 BAR); 93HPS114-M05-SP = 200 PSI (16 BAR)
- ◆ **Hydraulic Motor Inlet:** 2500 (172 BAR) MAX PSI
- ◆ **Hydraulic Motor Outlet:** 100 (6.9 BAR) MAX PSI
- ◆ **Max RPM:** 5000 RPM
- ◆ **Max Hydraulic Flow:** 7 GPM (26 BAR)
- ◆ **Ports:** 93HPS114-M05: 2" Universal Flange Inlet, 3/4 NPT (female) outlet. 93HPS114-M05-SP: 2" Universal Flange Inlet, 2" Universal Flange Outlet
- ◆ **Hydraulic Ports:** SAE-8, SAE-10
- ◆ **Dry Weight:** 43 lbs (19.5 kg)
- ◆ **Mounting Bolts:** M10 or 3/8"



ORDERING INFORMATION

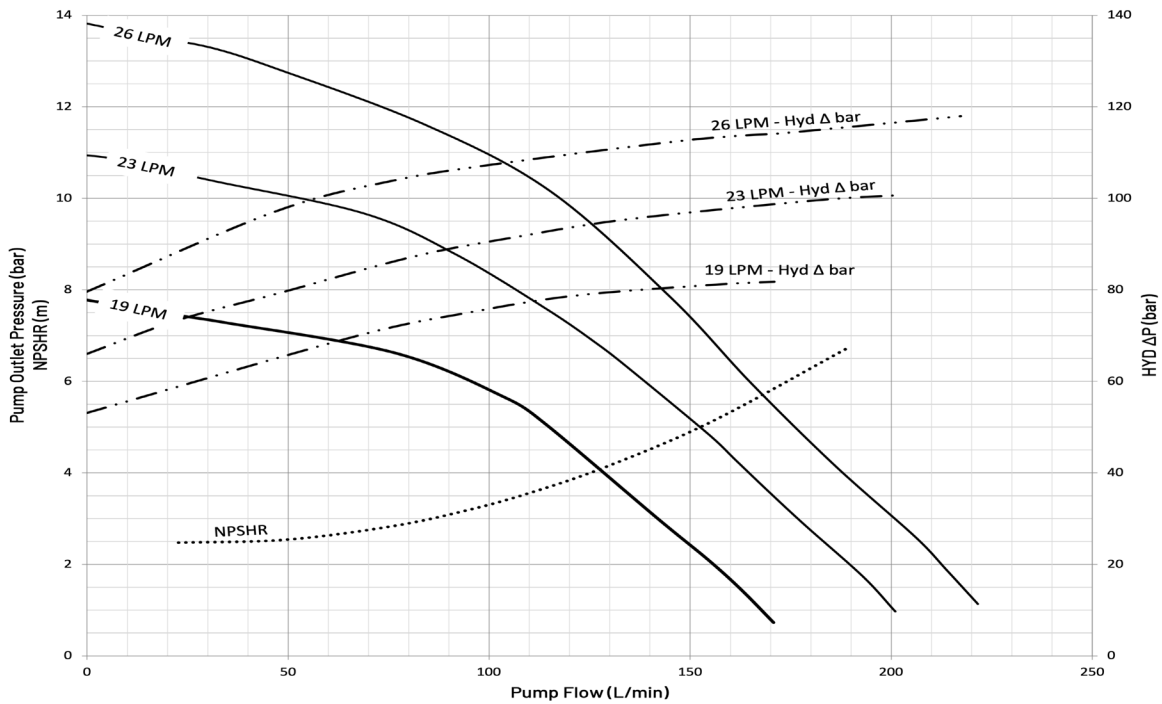
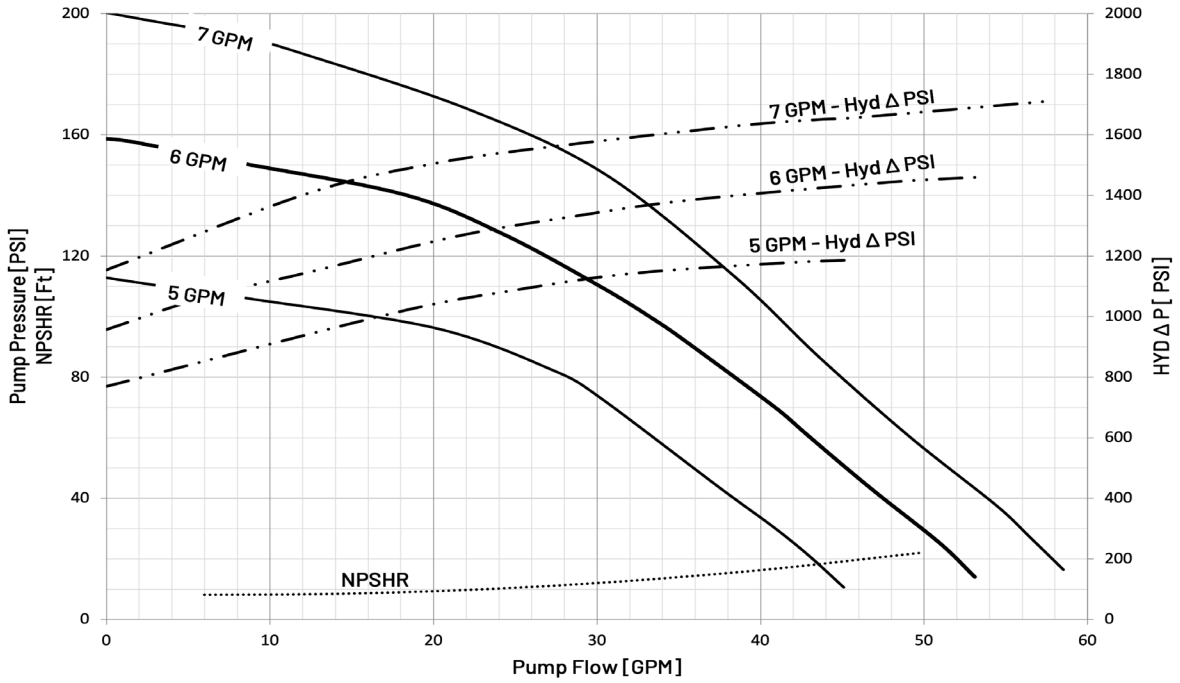
MODEL NUMBER	MAX GPM	MAX LPM	INLET MAX PSI (BAR)	OUTLET MAX PSI (BAR)	MAX FLOW RATE GPM (LPM)	MAX PRESSURE PSI (BAR)
93HPS114-M05	7	26	2500 (172)	100 (6.9)	57 (216)	200 (13.7)
93HPS114-M05Y*	7	26	2500 (172)	100 (6.9)	57 (216)	200 (13.7)
93HPS114-M05-SP	7	26	2500 (172)	100 (6.9)	47 (178)	200 (13.7)

* Model includes case drain hydraulic motor and speed sensor.

PERFORMANCE DATA

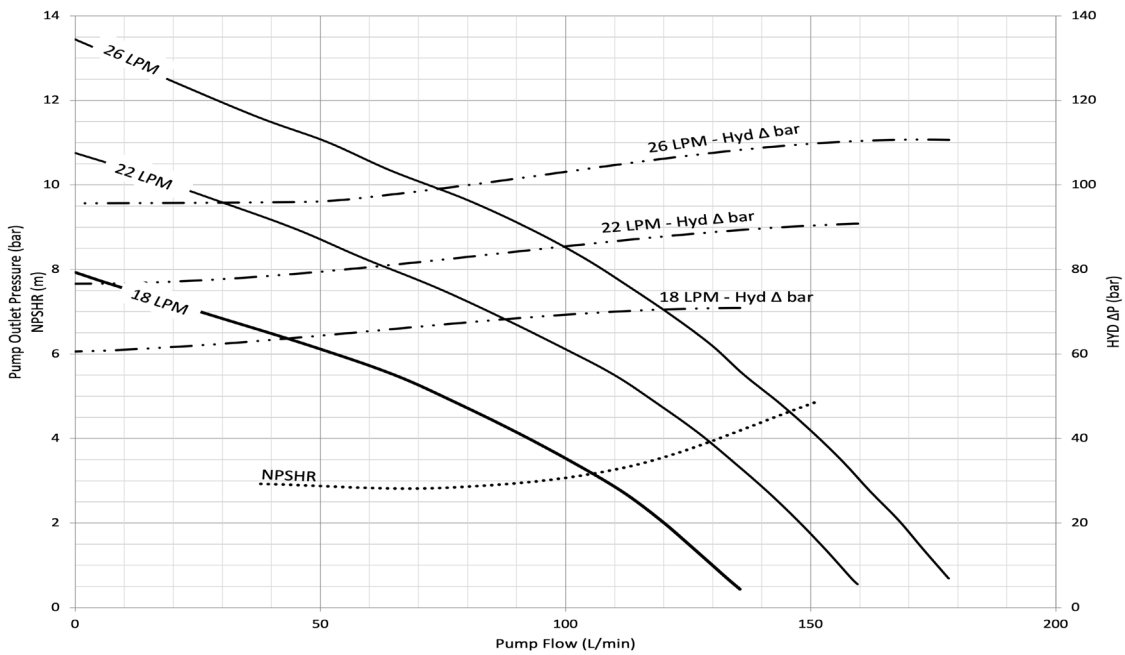
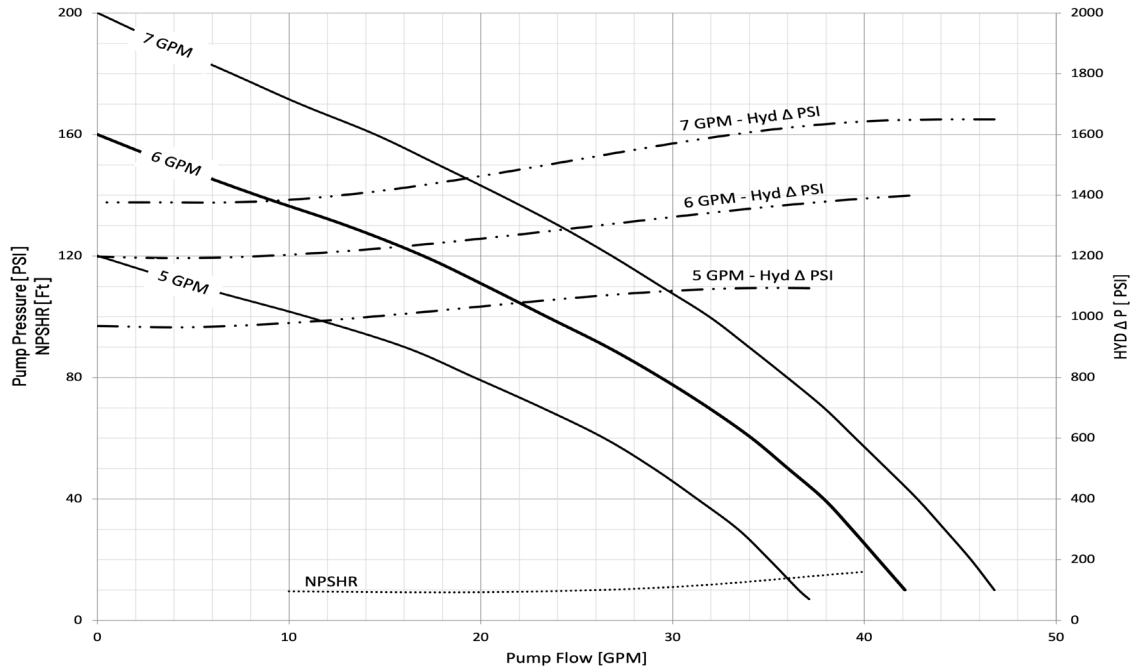
MODEL 93HPS114-M05 PERFORMANCE CURVES

All specifications and performance data are based on water as a carrier fluid.



MODEL 93HPS114-M05-SP PERFORMANCE CURVES

All specifications and performance data are based on water as a carrier fluid.



PERFORMANCE DATA

MODELS 93HPS114-M05, 93HPS114-M05Y

U.S. UNITS

Hyd Flow GPM	GPM at 10 PSI	GPM at 20 PSI	GPM at 30 PSI	GPM at 40 PSI	GPM at 50 PSI	GPM at 60 PSI	GPM at 70 PSI	GPM at 80 PSI	GPM at 90 PSI	GPM at 100 PSI	GPM at 110 PSI	GPM at 120 PSI	GPM at 130 PSI	GPM at 140 PSI
4	34	32	29	26	22	16								
5	42	41	39	36	34	32	28	24	20	14				
6	50	49	48	46	44	42	39	37	34	32	28	25	19	10
7	57	55	53	52	50	48	46	45	42	40	38	36	33	30

MAX GPM = 57, MAX PSI = 200

METRIC UNITS

Hyd Flow LPM	LPM at 0.7 BAR	LPM at 1.4 BAR	LPM at 2.1 BAR	LPM at 2.8 BAR	LPM at 3.4 BAR	LPM at 4.1 BAR	LPM at 4.8 BAR	LPM at 5.5 BAR	LPM at 6.2 BAR	LPM at 6.9 BAR	LPM at 7.6 BAR	LPM at 8.3 BAR	LPM at 9.0 BAR	LPM at 9.7 BAR
15.1	129	121	110	98	83	61								
18.9	159	155	148	136	129	121	106	91	76	53				
22.7	189	185	182	174	167	159	148	140	129	121	106	95	72	38
26.5	216	208	201	197	189	182	174	170	159	151	144	136	125	114

MODEL 93HPS114-M05-SP

U.S. UNITS

Hyd Flow GPM	GPM at 10 PSI	GPM at 20 PSI	GPM at 30 PSI	GPM at 40 PSI	GPM at 50 PSI	GPM at 60 PSI	GPM at 70 PSI	GPM at 80 PSI	GPM at 90 PSI	GPM at 100 PSI	GPM at 110 PSI	GPM at 120 PSI	GPM at 130 PSI	GPM at 140 PSI
5	37	35	33	31	29	26	23	20	16	11	5			
6	42	41	39	38	36	34	32	29	27	23	20	17	13	8
7	47	46	44	43	41	40	38	36	34	32	29	27	24	21

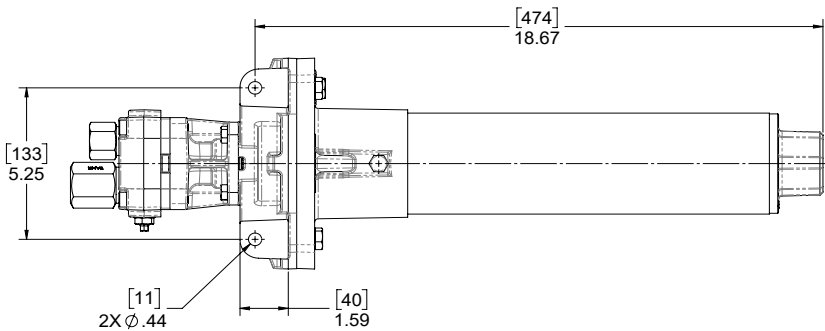
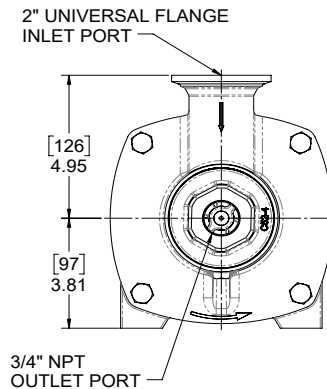
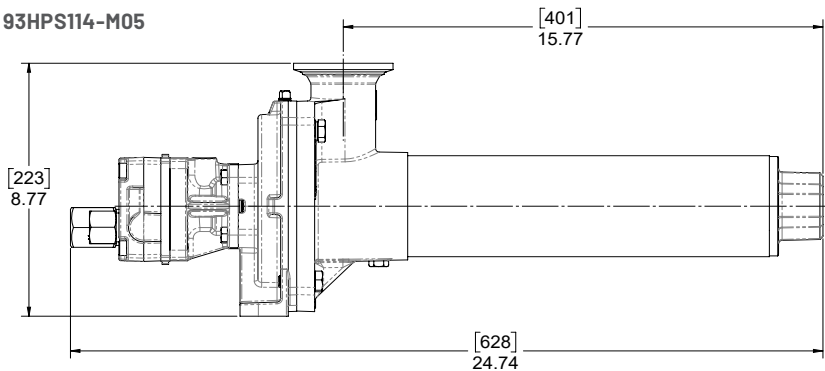
MAX GPM = 57, MAX PSI = 200

METRIC UNITS

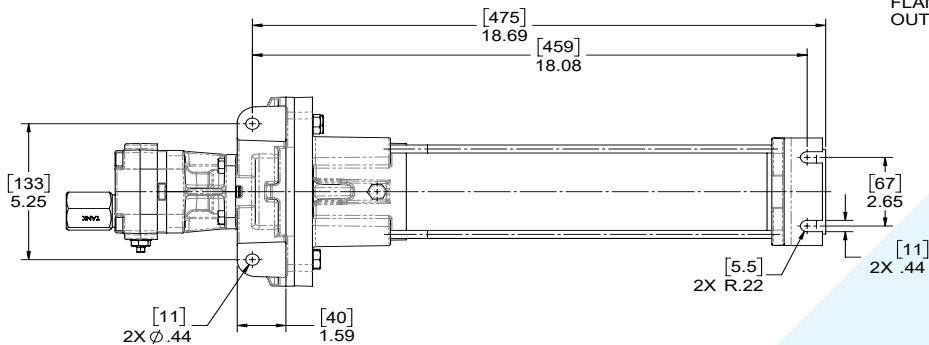
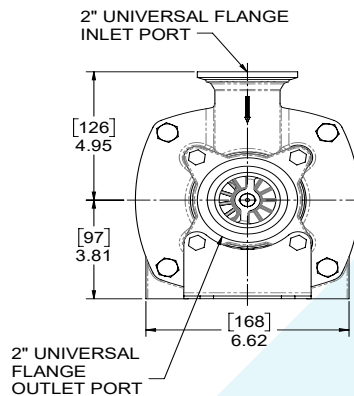
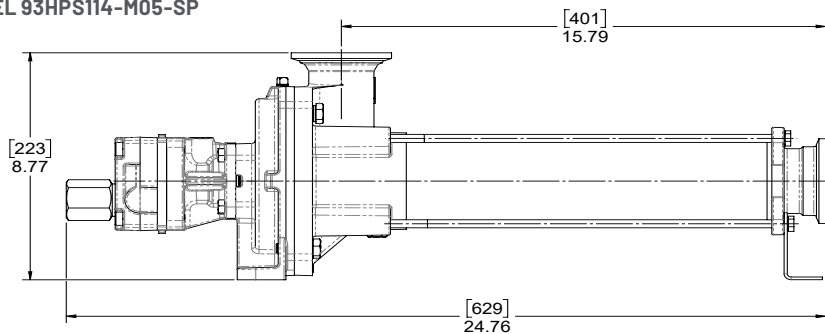
Hyd Flow LPM	LPM at 0.7 BAR	LPM at 1.4 BAR	LPM at 2.1 BAR	LPM at 2.8 BAR	LPM at 3.4 BAR	LPM at 4.1 BAR	LPM at 4.8 BAR	LPM at 5.5 BAR	LPM at 6.2 BAR	LPM at 6.9 BAR	LPM at 7.6 BAR	LPM at 8.3 BAR	LPM at 9.0 BAR	LPM at 9.7 BAR
18	133	126	119	111	101	90	78	65	48	28	9			
22	158	153	147	141	134	127	119	110	98	86	73	59	45	28
26	178	173	168	162	157	151	144	136	130	122	113	104	93	80

DIMENSIONAL DATA

MODEL 93HPS114-M05



MODEL 93HPS114-M05-SP



375 Fifth Avenue NW,
 New Brighton, MN 55112, USA
 Main: 651-766-6300 | Technical: 800-445-8360
 Order: 800-424-9776 | Fax Order: 800-323-6496
 customer.inquiries@pentair.com

HYPRO EU LTD.
 Unit 9, Bourn Quarter,
 Bourn, Caldecote,
 Cambridge CB23 7FW UK
 +44 1954 260097 Fax: +44 1954 260245
 euaginfo@pentair.com | euagorders@pentair.com

CENTRAL & SOUTH AMERICA
 +55 (11) 3317-5085
 vendas.pwdb@pentair.com

All indicated Pentair trademarks and logos are property of Pentair. Third party registered and unregistered trademarks and logos are the property of their respective owners.