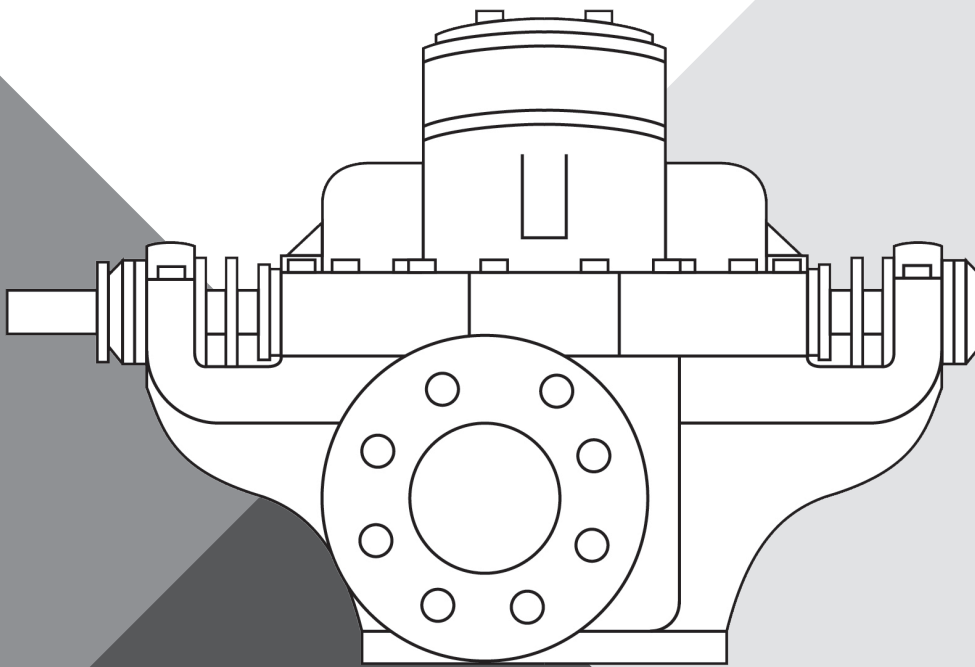


## SPLIT CASE PUMPS

1800, 1900, HGT, 1800F, 1900F,  
2800F, 5800F SERIES



## REPAIR KITS AND PARTS GUIDE

[pentair.com/fairbanks-nijhuis](http://pentair.com/fairbanks-nijhuis)

# TABLE OF CONTENTS

SERIES	DESCRIPTION	PAGE NO.
	MATERIAL CODE INDEX .....	3
<b>HVAC &amp; WATER SUPPLY PUMPS</b>		
1800 .....	PACKING REPAIR KIT .....	4
1800 .....	SEAL REPAIR KIT .....	5
1800 .....	OVERHAUL KIT WITH PACKING .....	6
1800 .....	OVERHAUL KIT WITH SEAL .....	7
1800 .....	ROTATING ASSEMBLY WITH PACKING .....	8
1800 .....	ROTATING ASSEMBLY WITH SEAL .....	9
1800 .....	KIT SELECTION TABLE .....	10
1800 .....	NSF KIT SELECTION TABLE .....	11
1900 .....	PACKING REPAIR KIT .....	12
1900 .....	SEAL REPAIR KIT .....	13
1900 .....	OVERHAUL KIT WITH PACKING .....	14
1900 .....	OVERHAUL KIT WITH SEAL .....	15
1900 .....	ROTATING ASSEMBLY WITH PACKING .....	16
1900 .....	ROTATING ASSEMBLY WITH SEAL .....	17
1900 .....	KIT SELECTION TABLE .....	18
<b>FIRE PUMPS</b>		
HGT .....	PACKING REPAIR KIT .....	19
HGT .....	OVERHAUL KIT WITH PACKING .....	20
1820F & 1840F .....	PACKING REPAIR KIT .....	21
1820F & 1840F .....	OVERHAUL KIT WITH PACKING .....	22
1820F & 1840F .....	ROTATING ASSEMBLY WITH PACKING .....	23
1900F .....	PACKING REPAIR KIT .....	24
1900F .....	OVERHAUL KIT WITH PACKING .....	25
1900F .....	ROTATING ASSEMBLY WITH PACKING .....	26
1800F & 1900F .....	KIT SELECTION TABLE .....	27
2800F & 5800F .....	PACKING REPAIR KIT .....	28
2800F & 5800F .....	OVERHAUL KIT WITH PACKING .....	29
2800F & 5800F .....	ROTATING ASSEMBLY WITH PACKING .....	30
5800F .....	PACKING REPAIR KIT .....	31
5800F .....	OVERHAUL KIT WITH PACKING .....	32
5800F .....	ROTATING ASSEMBLY WITH PACKING .....	33
2800F & 5800F .....	KIT SELECTION TABLE .....	34
	NOTES PAGE .....	35
	WARRANTY .....	36

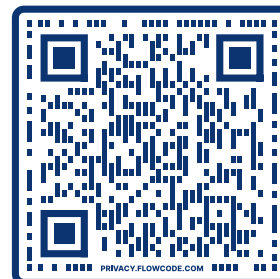
# MATERIAL CODE INDEX

CODE	MATERIAL DESCRIPTION
010	Gray Cast Iron - Class 30
028	Malleable Cast Iron
053	Ductile Iron 60-45-10
058	Wrought Carbon Steel C1018
062	Carbon Steel C1040
063	Carbon Steel C1045
080	Steel Fasteners SAE #2
082	Steel Fasteners SAE #5
087	Wrought Steel Misc. Appl
088	Wrought Spring Steel
100	303 Stainless Steel
104	316 Stainless Steel
107	416 Stainless Steel
108	440C Stainless Steel Hardened
109	416 Stainless Steel - Heat Treated
111	Alloy 20 Stainless Steel
190	Bronze Fastener Hardware
199	Lead Semi-Red Brass 81-3-7-9
208	Lead Red Brass 85-5-5-5
225	Cast Silicon Brass
319	Cast or Wrought Aluminum
360	Cadmium Plated Steel
370	Chrome Plated Cast Iron
387	Galvanized Malleable Iron
457	Buna-N
478	Neoprene
494	Viton
500	Nylon Resin Zytel ST801
503	Polyethylene Plastic
505	Polyvinyl Chloride Tubing

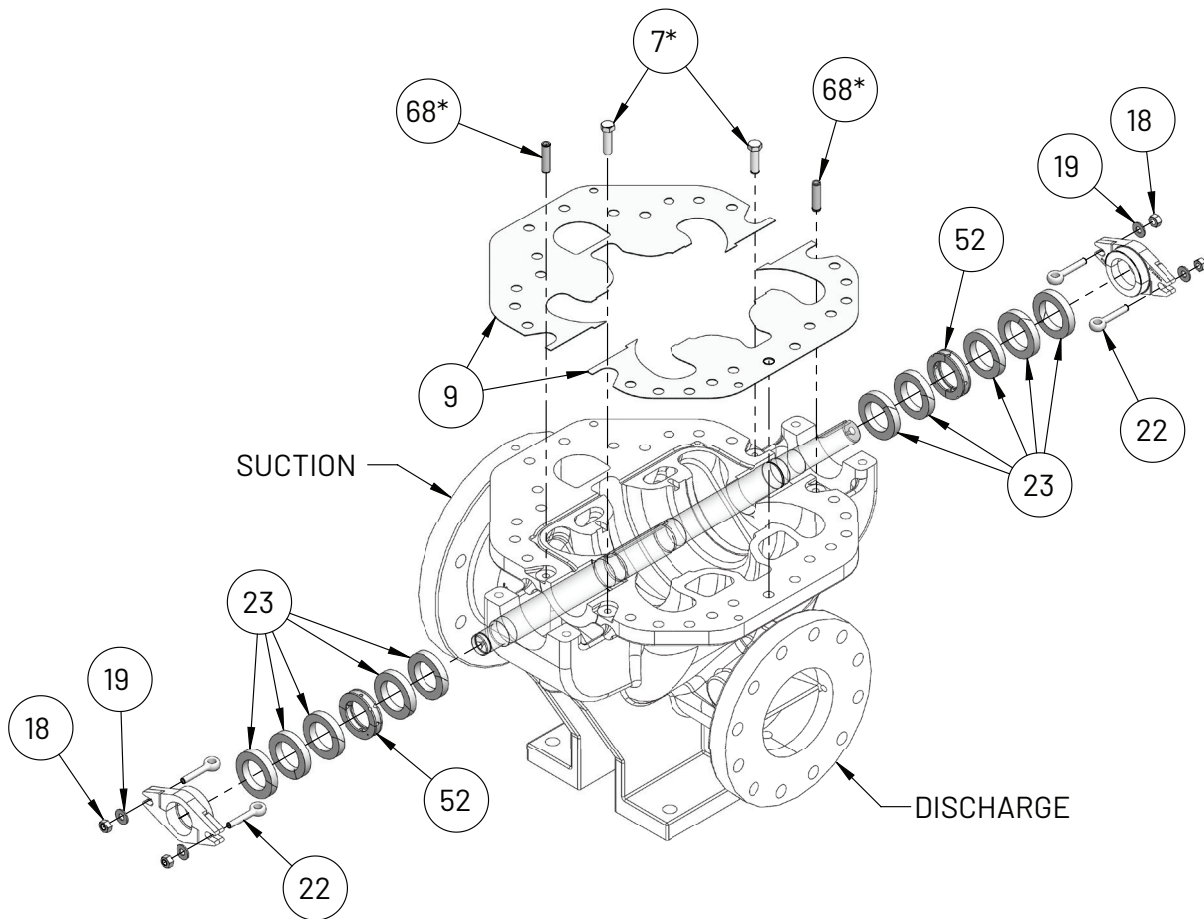
CODE	MATERIAL DESCRIPTION
507	Teflon Coated Steel
511	Nylon
512	25% Glass Filled Teflon
522	Glass Filled Teflon
548	Ceramic Coated 316SS
554	Bronze Ring Construction
598	Cellulose & Cork CN-705
603	Nitrile Butadiene
614	Victolex 258/N852 Accopac
621	Sealant (Liquid Gasket) - Loctite/STA-LOK
642	All Iron Construction
643	All Bronze Construction
644	Bronze Fitted Construction
645	Aluminum Construction
646	Stainless Steel Construction
647	Ball or Roller Bearings
651	Lube Fittings
652	Oilers
653	Grease or Oil Seals
656	Oil Breathers
660	Gland (Bronze/316 S/S)
661	Gland (Steel/Steel)
662	Gland (Bronze/Steel)
749	B30 P66 171 John Crane Seal
754	BP2C1 John Crane Seal
755	B30 P66 271 John Crane Seal
758	BP871 John Crane Seal
764	XP1C1 John Crane Seal
802	Non Asbestos Packing
999	Vendors Standard Material

**READY TO ORDER YOUR  
KIT?**

**SCAN THIS CODE  
TO LOCATE YOUR  
NEAREST FAIRBANKS  
NIJHUIS AUTHORIZED  
DISTRIBUTOR**



# 1800 SERIES PACKING REPAIR KIT



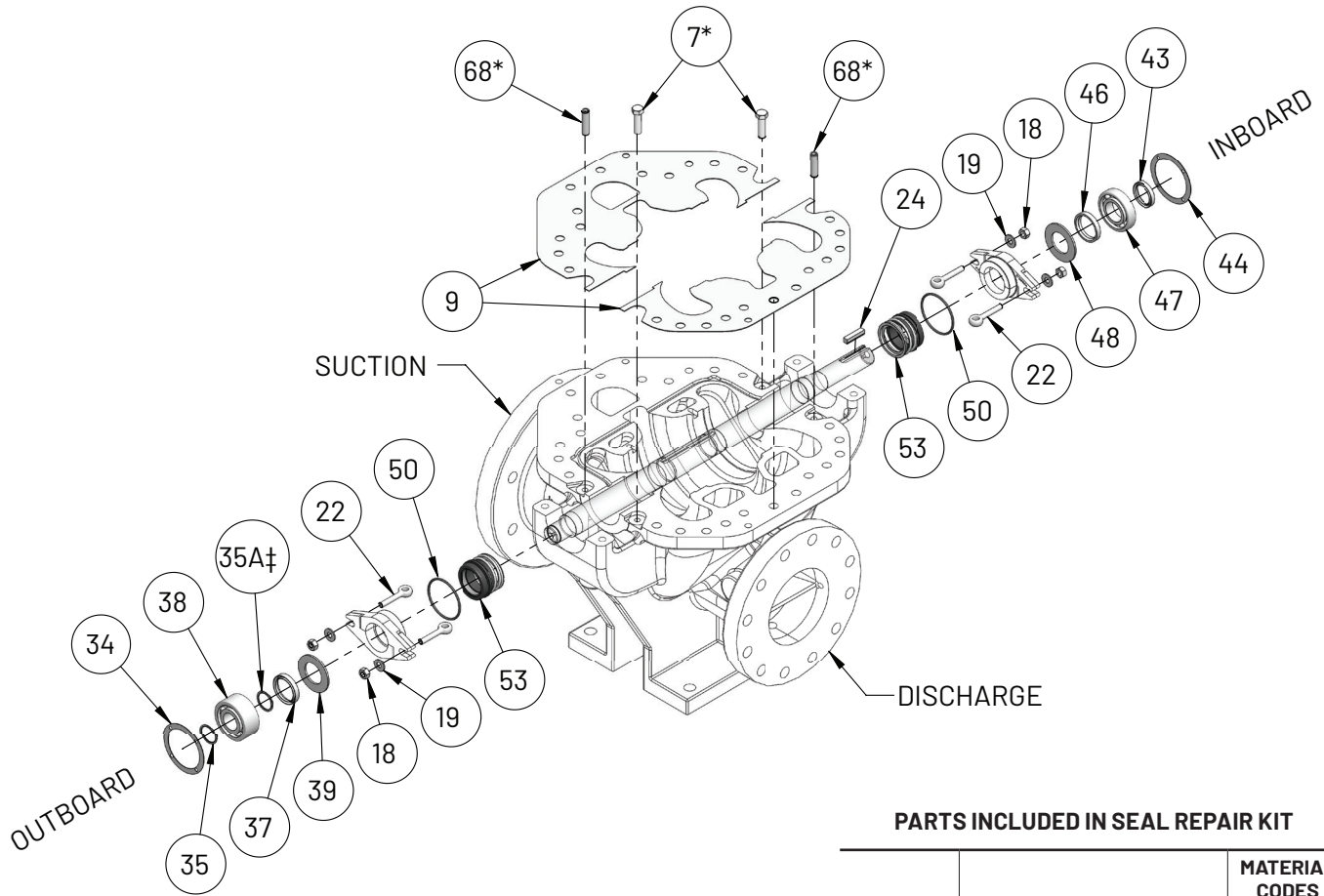
## PARTS INCLUDED IN PACKING REPAIR KIT

PART NO.	PART DESCRIPTION	MATERIAL CODES
		644 BF
7*	Cap Screw	104
9	Gasket	463
18	Nut	104
19	Washer	104
22	Swing Bolt	104
23	Packing	816
52	Lantern Ring	512
68*	Drive Pin	104

### NOTES

\*PART NO. 68 IS FOR POWER SERIES #1 & #2 ONLY. FOR OTHER POWER SERIES; REFER TO PART NO. 7.

# 1800 SERIES SEAL REPAIR KIT



## PARTS INCLUDED IN SEAL REPAIR KIT

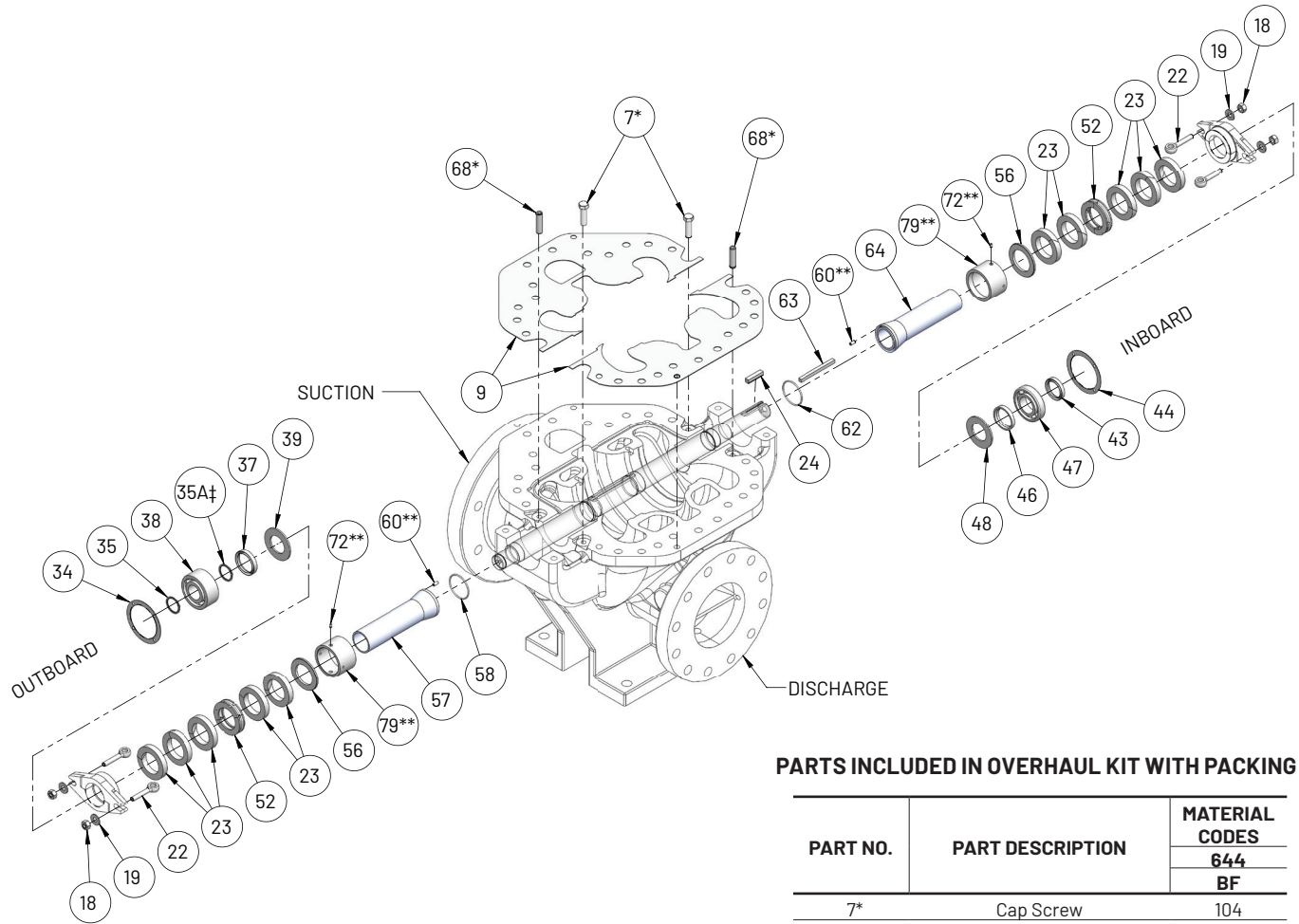
PART NO.	PART DESCRIPTION	MATERIAL CODES
		644 BF
7*	Cap Screw	104
9	Gasket	463
18	Nut	104
19	Washer	104
22	Swing Bolt	104
23	Packing	816
24	Coupling Key	087
34	Gasket	614
35	Retaining Ring	088
35A†	Retaining Ring	088
37	Grease Seal	653
38	Bearing	647
39	Slinger	478
43	Grease Seal	653
44	Gasket	614
46	Grease Seal	653
47	Bearing	647
48	Slinger	478
50	O-Ring	457
53	Mechanical Seal	749
52	Lantern Ring	512
56	Bushing	208
68*	Drive Pin	104

### NOTES

\*PART NO. 68 IS FOR POWER SERIES #1 & #2 ONLY. FOR OTHER POWER SERIES; REFER TO PART NO. 7.

†PART NO. 35A IS USED ON POWER SERIES 6B, 7 & 7A ONLY.

# 1800 SERIES OVERHAUL KIT WITH PACKING



## PARTS INCLUDED IN OVERHAUL KIT WITH PACKING

PART NO.	PART DESCRIPTION	MATERIAL CODES
		644 BF
7*	Cap Screw	104
9	Gasket	463
18	Nut	104
19	Washer	104
22	Swing Bolt	104
23	Packing	816
24	Coupling Key	087
34	Gasket	614
35	Retaining Ring	088
35A‡	Retaining Ring	088
37	Grease Seal	653
38	Bearing	647
39	Slinger	478
43	Grease Seal	653
44	Gasket	614
46	Grease Seal	653
47	Bearing	647
48	Slinger	478
52	Lantern Ring	512
56	Bushing	208
57	Sleeve	208
58	O-Ring	457
60**	Sleeve Pin	104
62	O-Ring	457
63	Impeller Key	107
64	Sleeve	208
68*	Drive Pin	104
72**	Set Screw	113
79**	Sleeve Collar	208

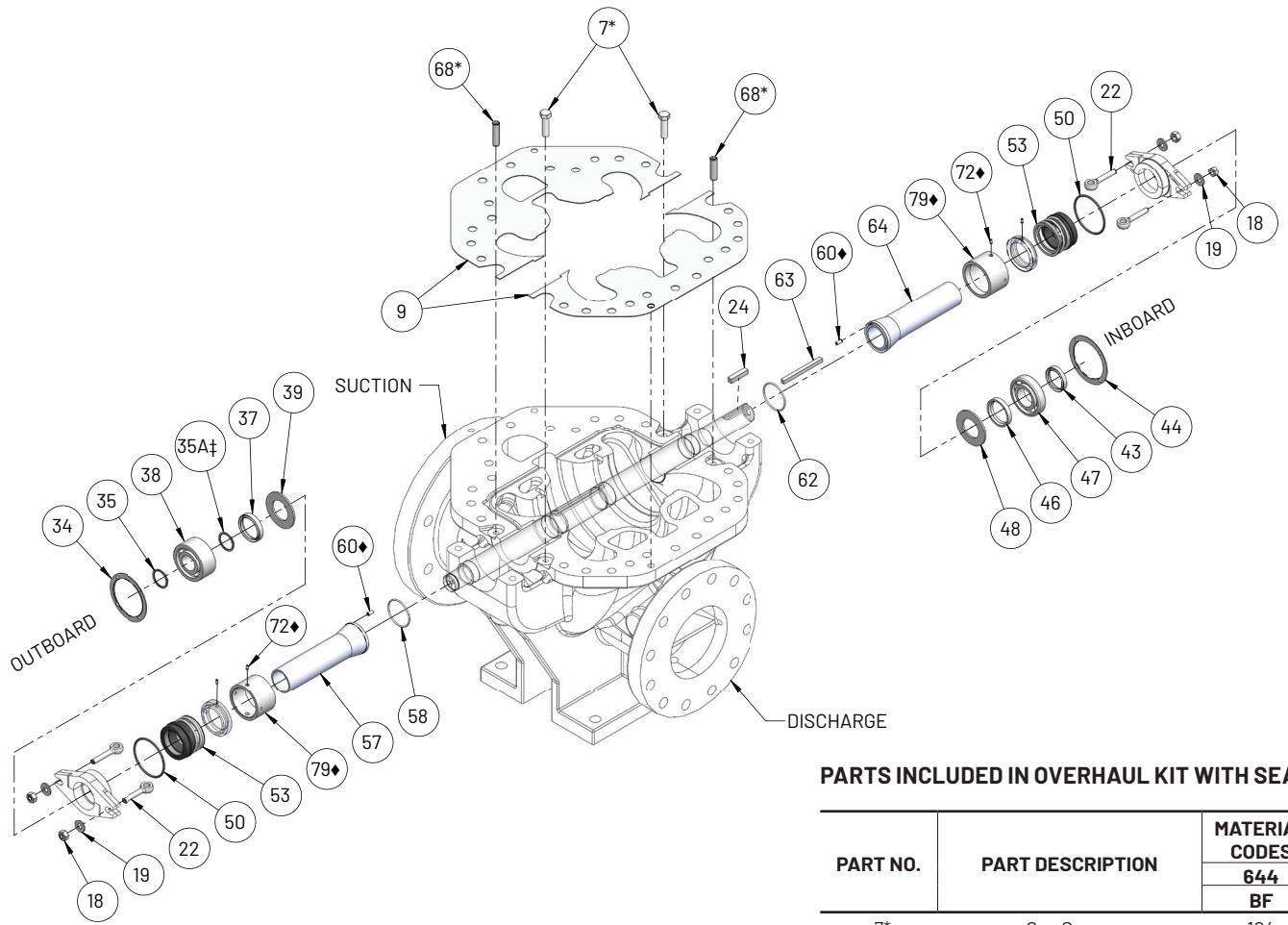
### NOTES

\*PART NO. 68 IS FOR POWER SERIES #1 & #2 ONLY. FOR OTHER POWER SERIES; REFER TO PART NO. 7.

‡PART NO. 35A IS USED ON POWER SERIES 6B, 7 & 7A ONLY.

\*\*PART NOS. 60, 72 & 79 ARE USED FOR 10X12X18D ONLY.

# 1800 SERIES OVERHAUL KIT WITH SEAL



## PARTS INCLUDED IN OVERHAUL KIT WITH SEAL

PART NO.	PART DESCRIPTION	MATERIAL CODES
		644 BF
7*	Cap Screw	104
9	Gasket	463
18	Nut	104
19	Washer	104
22	Swing Bolt	104
23	Packing	816
24	Coupling Key	087
34	Gasket	614
35	Retaining Ring	088
35A‡	Retaining Ring	088
37	Grease Seal	653
38	Bearing	647
39	Slinger	478
43	Grease Seal	653
44	Gasket	614
46	Grease Seal	653
47	Bearing	647
48	Slinger	478
52	Lantern Ring	512
56	Bushing	208
57	Sleeve	208
58	O-Ring	457
60**	Sleeve Pin	104
62	O-Ring	457
63	Impeller Key	107
64	Sleeve	208
68*	Drive Pin	104
72**	Set Screw	113
79**	Sleeve Collar	208

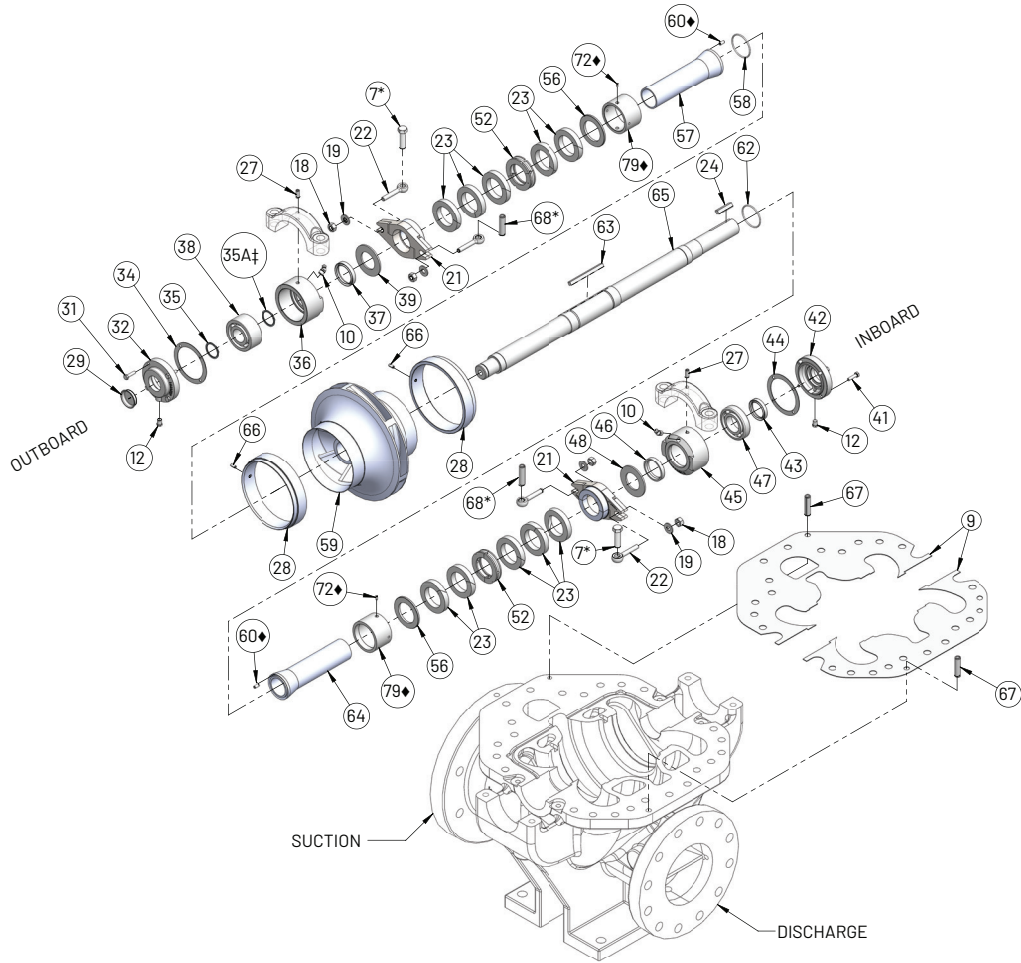
### NOTES

\*PART NO. 68 IS FOR POWER SERIES #1 & #2 ONLY. FOR OTHER POWER SERIES; REFER TO PART NO. 7.

‡PART NO. 35A IS USED ON POWER SERIES 6B, 7 & 7A ONLY.

\*\*PART NOS. 60, 72 & 79 ARE USED FOR 10X12X18D ONLY.

# 1800 SERIES ROTATING ASSEMBLY WITH PACKING



## PARTS INCLUDED IN ROTATING ASSEMBLY WITH PACKING

NOTE: ROTATING ASSEMBLY ARRIVES PRE-ASSEMBLED FOR EASE OF INSTALLATION.

PART NO.	PART DESCRIPTION	MATERIAL CODES	PART NO.	PART DESCRIPTION	MATERIAL CODES
		644 BF			644 BF
7*	Cap Screw	104	43	Grease Seal	653
9	Gasket	463	44	Gasket	614
10	Grease Fitting	651	45	Catridge	010
12	Plug	087	46	Grease Seal	653
18	Nut	104	47	Bearing	647
19	Washer	104	48	Slinger	478
22	Swing Bolt	104	52	Lantern Ring	512
23	Packing	816	56	Bushing	208
24	Coupling Key	087	57	Sleeve	208
27	Pin	360	58	O-Ring	457
28	Case Ring	208	60**	Sleeve Pin	104
29	Protector	087	62	O-Ring	457
31	Cap Screw	082	63	Impeller Key	107
32	Catridge Cap	010	64	Sleeve	208
34	Gasket	614	65	Shaft	063
35	Retaining Ring	088	66	Pin	360
35A‡	Retaining Ring	088	67	Pin	360
37	Grease Seal	653	68*	Drive Pin	104
38	Bearing	647	72**	Set Screw	113
39	Slinger	478	79**	Sleeve Collar	208

### NOTES

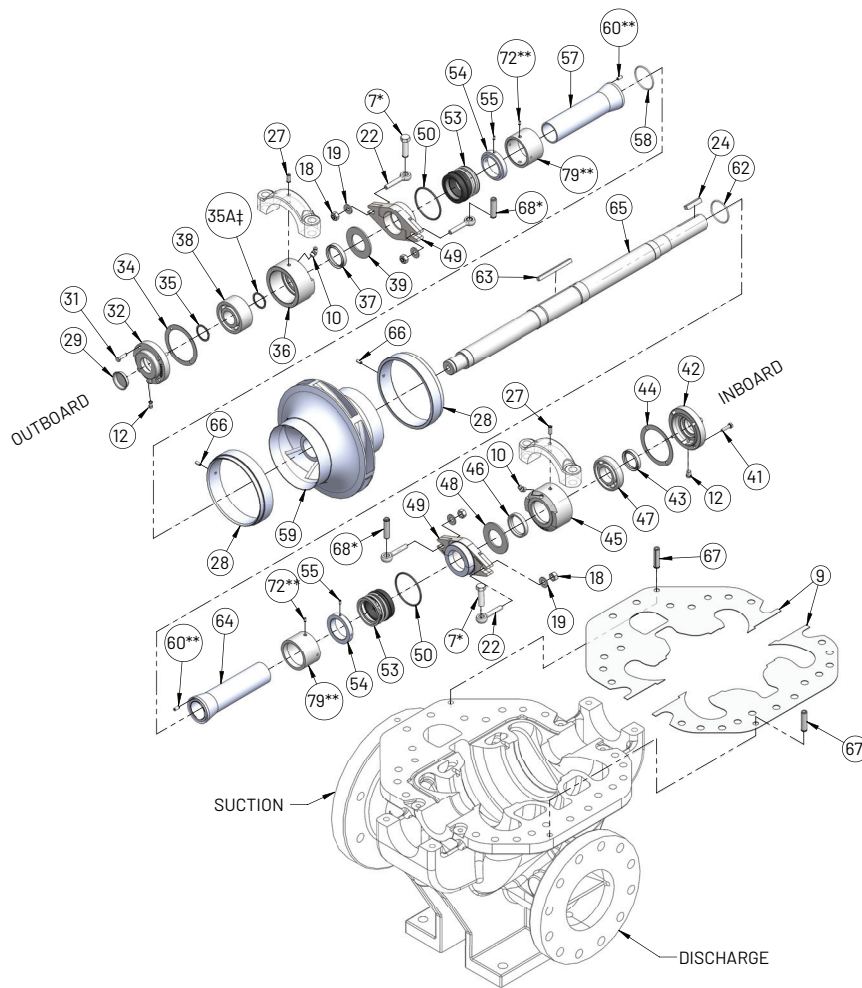
\*PART NO. 68 IS FOR POWER SERIES #1 & #2 ONLY. FOR OTHER POWER SERIES; REFER TO PART NO. 7.

‡PART NO. 35A IS USED ON POWER SERIES 6B, 7 & 7A ONLY.

\*\*PART NOS. 60, 72 & 79 ARE USED FOR 10X12X18D ONLY.



# 1800 SERIES ROTATING ASSEMBLY WITH SEAL



## PARTS INCLUDED IN ROTATING ASSEMBLY WITH SEAL

NOTE: ROTATING ASSEMBLY ARRIVES PRE-ASSEMBLED FOR EASE OF INSTALLATION.

PART NO.	PART DESCRIPTION	MATERIAL CODES	PART NO.	PART DESCRIPTION	MATERIAL CODES
		644			644
		BF			BF
7*	Cap Screw	104	43	Grease Seal	653
9	Gasket	463	44	Gasket	614
10	Grease Fitting	651	45	Cartridge	010
12	Plug	087	46	Grease Seal	653
18	Nut	104	47	Bearing	647
19	Washer	104	48	Slinger	478
22	Swing Bolt	104	52	Lantern Ring	512
23	Packing	816	56	Bushing	208
24	Coupling Key	087	57	Sleeve	208
27	Pin	360	58	O-Ring	457
28	Case Ring	208	60**	Sleeve Pin	104
29	Protector	087	62	O-Ring	457
31	Cap Screw	082	63	Impeller Key	107
32	Cartridge Cap	010	64	Sleeve	208
34	Gasket	614	65	Shaft	063
35	Retaining Ring	088	66	Pin	360
35A†	Retaining Ring	088	67	Pin	360
37	Grease Seal	653	68*	Drive Pin	104
38	Bearing	647	72**	Set Screw	113
39	Slinger	478	79**	Sleeve Collar	208

### NOTES

\*PART NO. 68 IS FOR POWER SERIES #1 & #2 ONLY. FOR OTHER POWER SERIES; REFER TO PART NO. 7.

†PART NO. 35A IS USED ON POWER SERIES 6B, 7 & 7A ONLY.

\*\*PART NOS. 60, 72 & 79 ARE USED FOR 10X12X18D ONLY.

# 1800 SERIES KIT SELECTION TABLE

PUMP SIZE	POWER SERIES	PACKING KIT	SEAL KIT	OVERHAUL KIT WITH PACKING	OVERHAUL KIT WITH SEALS	ROTATING ASSEMBLY W/ PACKING (BRZ SLEEVES)	ROTATING ASSEMBLY W/ PACKING (HARDENED 440C SS SLEEVES)	ROTATING ASSY W/ SEALS (BRZ SLEEVES)	ROTATING ASSY W/ SEALS (316 SS SLEEVES)					
2-1823	1	476-0629-644	476-0636-644	476-0370-644	476-0382-644	700-0001-644	700-0301-644	700-0043-644	700-0343-644					
2-1824						700-0002-644	700-0302-644	700-0044-644	700-0344-644					
2-1825						700-0003-644	700-0303-644	700-0045-644	700-0345-644					
2.5-1823B	2	476-0630-644	476-0637-644	476-0371-644	476-0383-644	700-0084-644	700-0384-644	700-0085-644	700-0385-644					
2.5-1824						700-0005-644	700-0305-644	700-0047-644	700-0347-644					
3-1824B						700-0006-644	700-0306-644	700-0048-644	700-0348-644					
3-1824C						700-0544-644	700-0661-644	700-0546-644	700-0662-644					
3-1825						700-0007-644	700-0307-644	700-0049-644	700-0349-644					
4-1822B						700-0008-644	700-0308-644	700-0050-644	700-0350-644					
4-1823A	3	476-0631-644	476-0638-644	476-0372-644	476-0384-644	700-0009-644	700-0309-644	700-0051-644	700-0351-644					
4-1823C						700-0023-644	700-0323-644	700-0053-644	700-0353-644					
4-1823D						700-0742-644	NA	700-0744-644	NA					
4-1824						700-0012-644	700-0312-644	700-0055-644	700-0355-644					
4-1825B	4	476-0632-644	476-0639-644	476-0373-644	476-0385-644	700-0024-644	700-0324-644	700-0056-644	700-0356-644					
5-1822A						700-0013-644	700-0313-644	700-0057-644	700-0357-644					
5-1822C(3500)						700-0484-644	700-0405-644	700-0489-644	700-0373-644					
5-1822C(1750)						700-0485-644	700-0406-644	700-0490-644	700-0374-644					
5-1823						700-0014-644	700-0314-644	700-0058-644	700-0358-644					
5-1824						700-0015-644	700-0315-644	700-0059-644	700-0359-644					
6-1822						700-0025-644	700-0325-644	700-0060-644	700-0360-644					
8-1821B						700-0017-644	700-0317-644	700-0062-644	700-0362-644					
6-1822HH						4A	476-0912-644	476-1009-644	476-0917-644	476-1011-644	700-0745-644	700-1004-644	700-0746-644	700-1005-644
6-1823						5	476-0633-644	476-0640-644	476-0374-644	476-0386-644	700-0018-644	700-0318-644	700-0063-644	700-0363-644
6-1824A	700-0026-644	700-0326-644	700-0064-644	700-0364-644										
6-1824B	700-0486-644	700-0407-644	700-0491-644	700-0375-644										
6-1824C	700-0487-644	700-0408-644	700-0492-644	700-0376-644										
6-1825	700-0019-644	700-0319-644	700-0065-644	700-0365-644										
8-1822	700-0027-644	700-0327-644	700-0066-644	700-0366-644										
8-1822A	700-0536-644	700-0663-644	700-0538-644	700-0664-644										
8-1823A	700-0020-644	700-0320-644	700-0067-644	700-0367-644										
8-1823B	700-0104-644	700-0404-644	700-0103-644	700-0403-644										
8-1824B	700-0021-644	700-0321-644	700-0068-644	700-0368-644										
6-1823HH	5A	476-0913-644	476-1013-644	476-0918-644	476-1015-644	700-0743-644	700-1006-644	700-1007-644	700-1008-644					
8-1825	6B	476-0634-644	476-0641-644	476-0375-644	476-0387-644	700-0658-644	700-0409-644	700-0655-644	700-0377-644					
8-1825A						700-0678-644	700-0668-644	700-0679-644	700-0669-644					
10-1822B						700-0087-644	700-0387-644	700-0092-644	700-0392-644					
10-1823B						700-0088-644	700-0388-644	700-0093-644	700-0393-644					
10-1823C						700-0488-644	700-0410-644	700-0493-644	700-0378-644					
10-1824	700-0089-644	700-0389-644	700-0094-644	700-0394-644										
8-1826	7	476-0635-644	476-0642-644	476-0376-644	476-0388-644	700-0831-644	700-1001-644	700-1002-644	700-1003-644					
12-1823B						700-0090-644	700-0390-644	700-0095-644	700-0395-644					
12-1824A						700-0540-644	700-0665-644	700-0542-644	700-0667-644					
14-1824						700-0091-644	700-0391-644	700-0097-644	700-0397-644					
10-1824D	7A	476-0914-644	476-1017-644	476-0919-644	476-1019-644	700-0693-644	700-1009-644	700-1010-644	700-1011-644					

## NOTES

1. THE ROTATING ASSEMBLY LISTED ABOVE ARE IN BRONZE FITTED CONSTRUCTION(644). IF NO PRICE IS LISTED IN THE MASTER PARTS PRICE LIST, REFER TO FACTORY.
2. FOR CHLORINATED WATER, ELEMENTS MAY BE AVAILABLE WITH 208 OR 243 BRONZE IMPELLERS. REFER TO FACTORY.

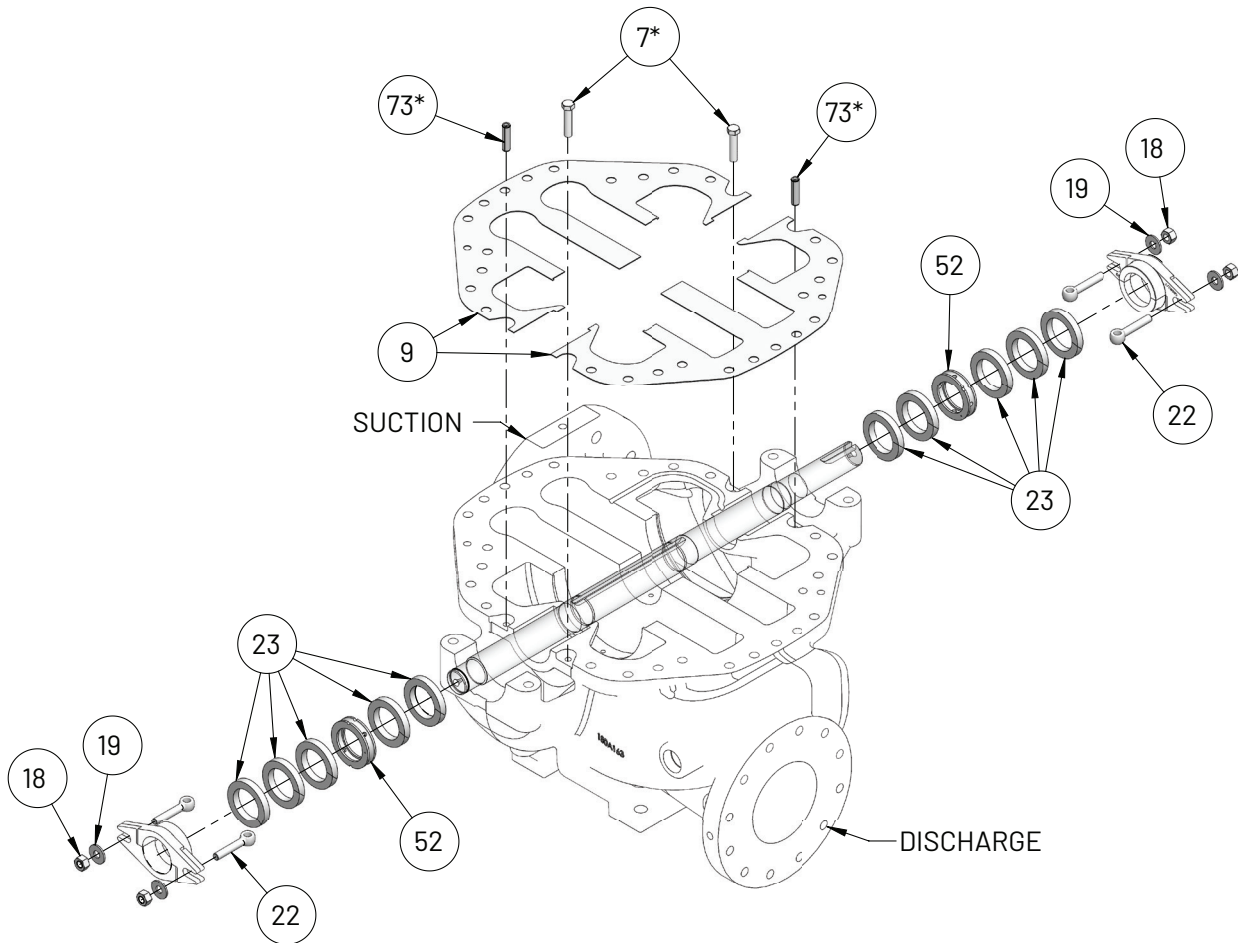
# 1800 SERIES NSF KIT SELECTION TABLE

PUMP SIZE	POWER SERIES	OVERHAUL KIT	ROTATING ASSEMBLY
2-1823	1	476-0382-626	700-0043-626
2-1824			700-0044-626
2-1825			700-0045-626
2.5-1823B	2	476-0383-626	700-0085-626
2.5-1824			700-0047-626
3-1824B			700-0048-626
3-1824C			700-0546-626
3-1825			700-0049-626
4-1822B			700-0050-626
4-1823A	3	476-0384-626	700-0051-626
4-1823C			700-0053-626
4-1823D			700-0744-626
4-1824			700-0055-626
4-1825B	4	476-0385-626	700-0056-626
5-1822A			700-0057-626
5-1822C(3500)			700-0489-626
5-1822C(1750)			700-0490-626
5-1823			700-0058-626
5-1824			700-0059-626
6-1822			700-0060-626
8-1821B	4A	476-1011-626	700-0062-626
6-1822HH			700-0746-626
6-1823	5	476-0386-626	700-0063-626
6-1824A			700-0064-626
6-1824B			700-0491-626
6-1824C			700-0492-626
6-1825			700-0065-626
8-1822			700-0066-626
8-1822A			700-0538-626
8-1823A			700-0067-626
8-1823B			700-0103-626
8-1824B			700-0068-626
6-1823HH	5A	476-1015-626	700-1007-626
8-1825	6B	476-0387-626	700-0655-626
8-1825A			700-0679-626
10-1822B			700-0092-626
10-1823B			700-0093-626
10-1823C			700-0493-626
10-1824	7	476-0388-626	700-0094-626
8-1826			700-1002-626
12-1823B			700-0095-626
12-1824A			700-0542-626
14-1824	7A	476-1019-626	700-0097-626
10-1824D			700-1010-626

## NOTES

1. THE ROTATING ASSEMBLY LISTED ABOVE ARE IN BRONZE FITTED CONSTRUCTION(644). IF NO PRICE IS LISTED IN THE MASTER PARTS PRICE LIST, REFER TO FACTORY.
2. FOR CHLORINATED WATER, ELEMENTS MAY BE AVAILABLE WITH 208 OR 243 BRONZE IMPELLERS. REFER TO FACTORY.

# 1900 SERIES PACKING REPAIR KIT



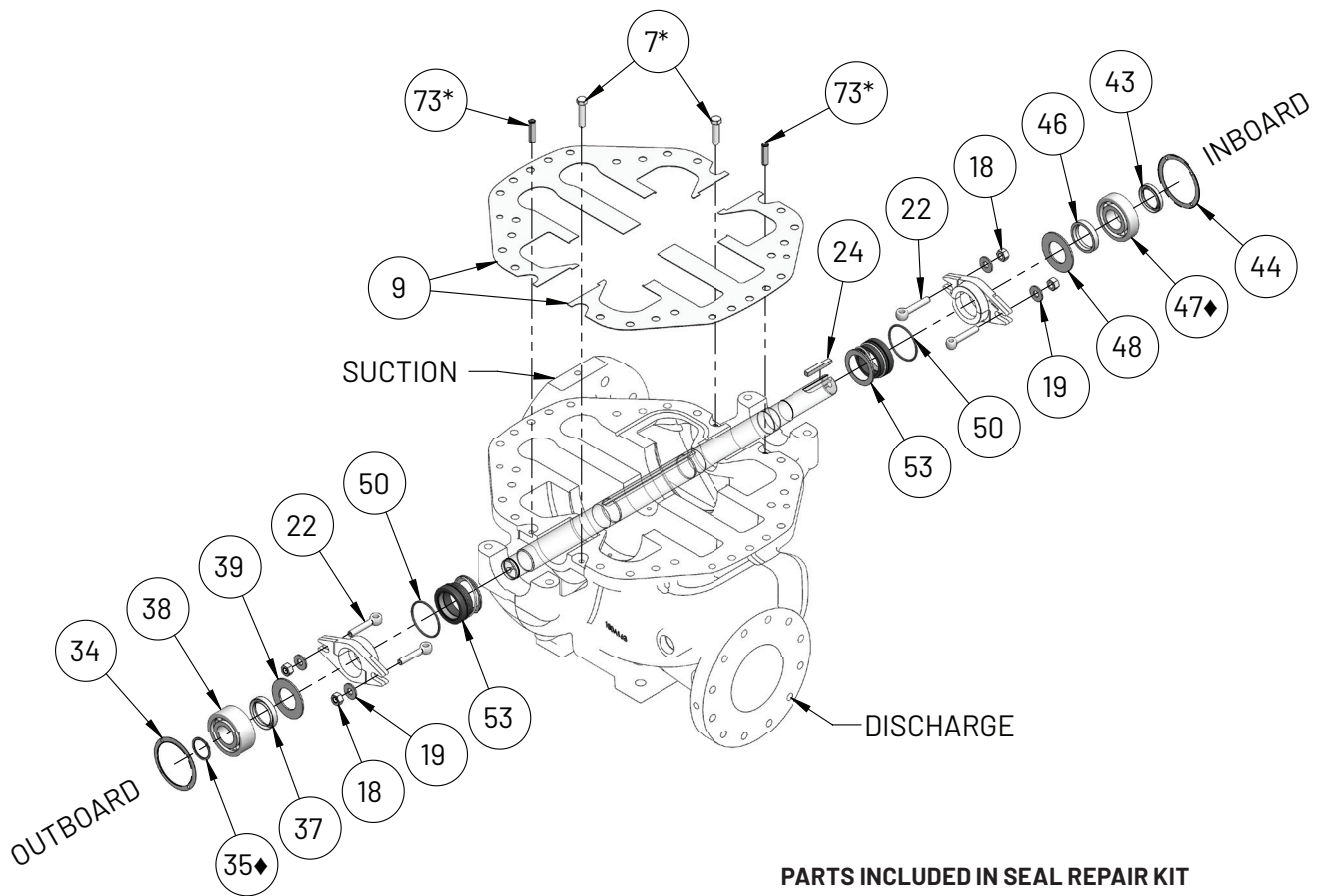
## PARTS INCLUDED IN PACKING REPAIR KIT

PART NO.	PART DESCRIPTION	MATERIAL CODES
		BF
7*	Cap Screw	104
9	Gasket	463
18	Nut	104
19	Washer	104
22	Swing Bolt	104
23	Packing	816
52	Lantern Ring	512
73*	Drive Pin	104

### NOTES

\*PART NO. 73 IS FOR POWER SERIES #2 ONLY. FOR OTHER POWER SERIES; REFER TO PART NO. 7.

# 1900 SERIES SEAL REPAIR KIT



## PARTS INCLUDED IN SEAL REPAIR KIT

PART NO.	PART DESCRIPTION	MATERIAL CODES
		BF
7*	Cap Screw	104
9	Gasket	463
18	Nut	104
19	Washer	104
22	Swing Bolt	104
24	Coupling Key	087
34	Gasket	614
35**	Retaining Ring	088
37	Grease Seal	653
38	Bearing	647
39	Slinger	478
43	Grease Seal	653
44	Gasket	614
46	Grease Seal	653
47	Bearing	647
48	Slinger	478
50	O-Ring	457
53	Mechanical Seal	749
73**	Drive Pin	104

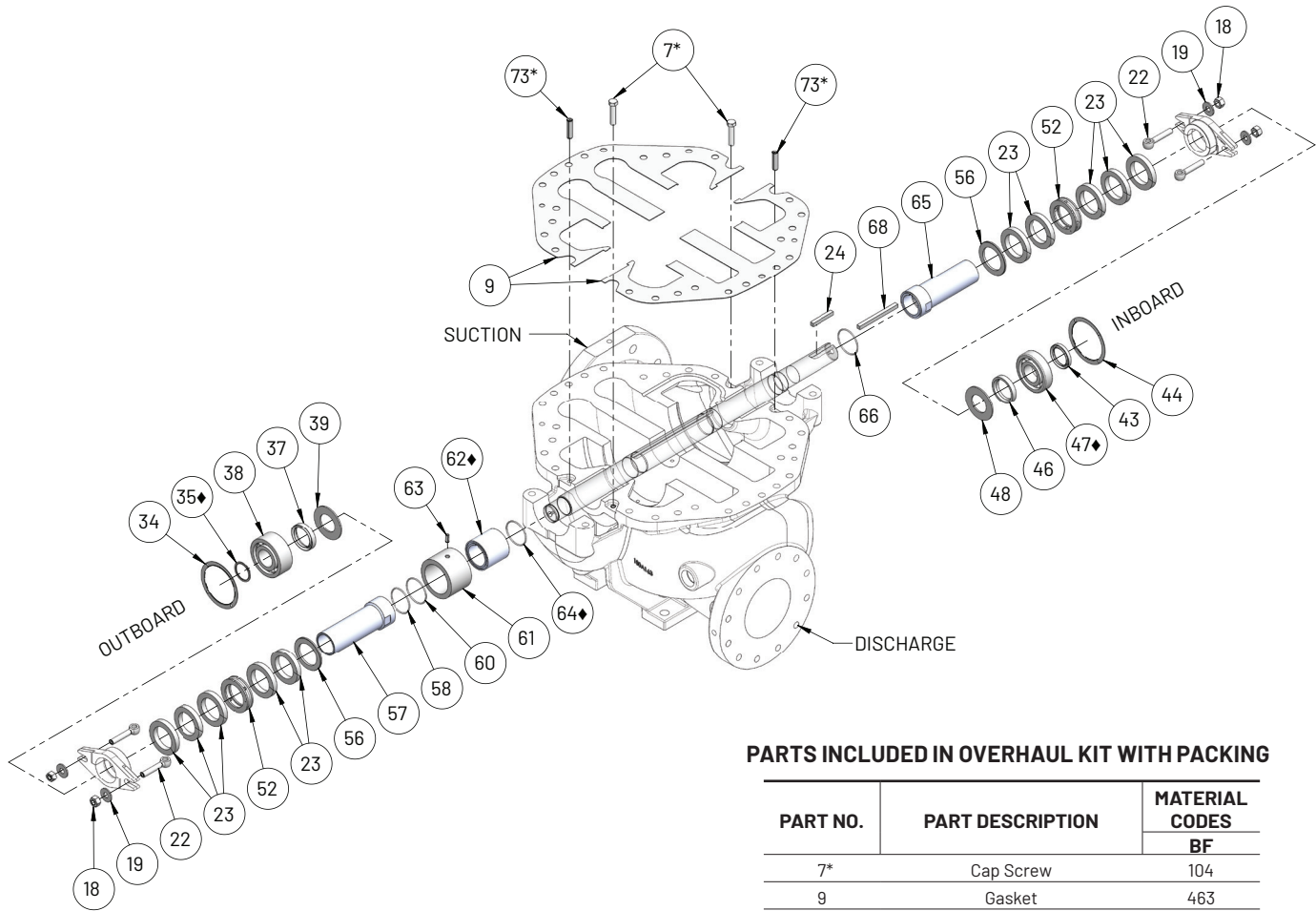
### NOTES

\*PART NO. 73 IS FOR POWER SERIES #2 ONLY. FOR OTHER POWER SERIES; REFER TO PART NO. 7.

\*\*FOR POWER SERIES 4A & 5A

- PART NO. 35 WILL BE REPLACED BY LOCKNUT & LOCK WASHER, QTY 1 NO. EACH
- QTY OF PART NO. 47 WOULD BE 2 NOS. (ONE ON EACH END).

# 1900 SERIES OVERHAUL KIT WITH PACKING



## PARTS INCLUDED IN OVERHAUL KIT WITH PACKING

PART NO.	PART DESCRIPTION	MATERIAL CODES
		BF
7*	Cap Screw	104
9	Gasket	463
18	Nut	104
19	Washer	104
22	Swing Bolt	104
23	Packing	816
24	Coupling Key	087
34	Gasket	614
35**	Retaining Ring	088
37	Grease Seal	653
38	Bearing	647
39	Slinger	478
43	Grease Seal	653
44	Gasket	614
46	Grease Seal	653
47**	Bearing	647
48	Slinger	478
52	Lantern Ring	512
56	Bushing	208
57	Sleeve	208
58	O-Ring	457
60	O-Ring	457
61	Bushing	226
62**	Sleeve	208
63	Drive Pin	360
64**	O-Ring	457
65	Sleeve	208
66	O-Ring	457
68	Drive Pin	104
73*	Drive Pin	104

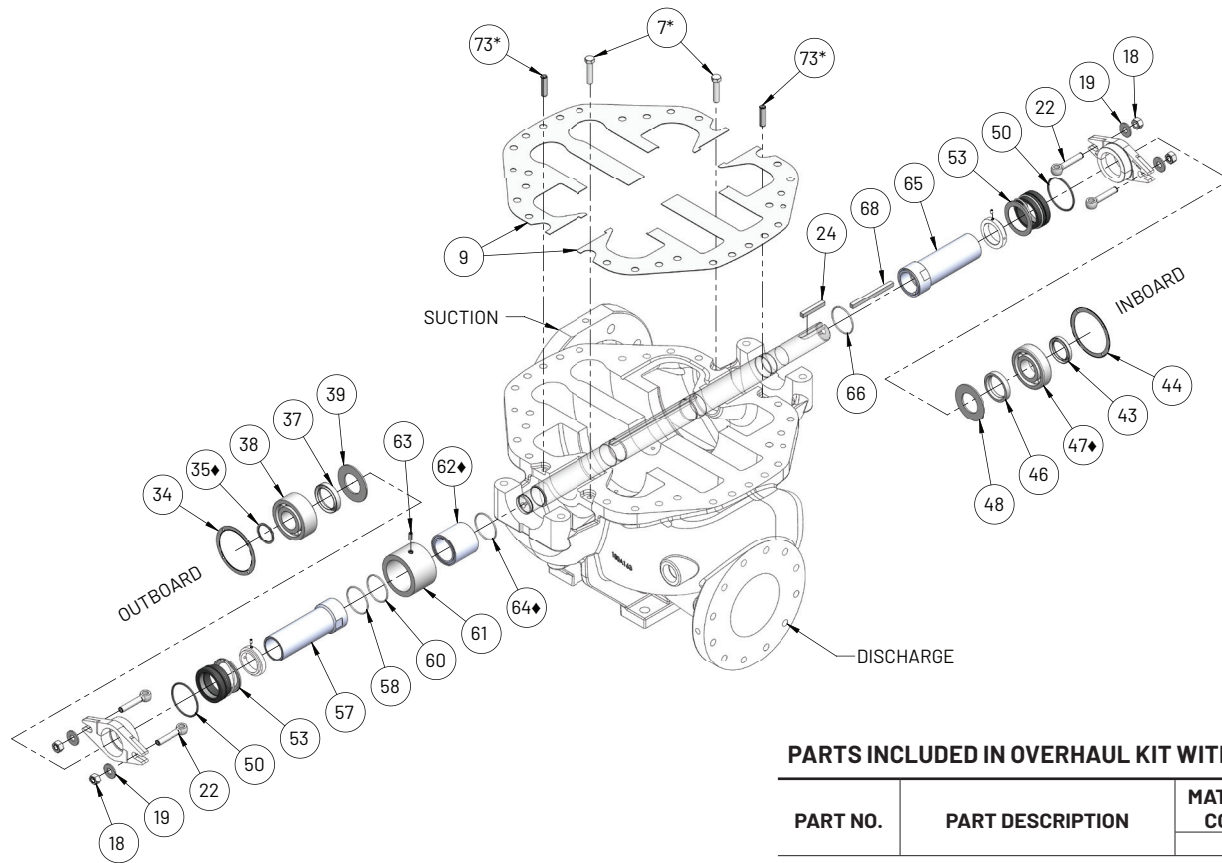
### NOTES

\*PART NO. 73 IS FOR POWER SERIES #2 ONLY. FOR OTHER POWER SERIES; REFER TO PART NO. 7.

\*\*FOR POWER SERIES 4A & 5A

- PART NO. 35 WILL BE REPLACED BY LOCKNUT & LOCK WASHER, QTY 1 NO. EACH.
- QTY OF PART NO. 47 WOULD BE 2 NOS. (ONE ON EACH END).
- PART NO. 62 AND 64 ARE NOT APPLICABLE.

# 1900 SERIES OVERHAUL KIT WITH SEAL



## PARTS INCLUDED IN OVERHAUL KIT WITH SEAL

PART NO.	PART DESCRIPTION	MATERIAL CODES
		BF
7*	Cap Screw	104
9	Gasket	463
18	Nut	104
19	Washer	104
22	Swing Bolt	104
23	Packing	816
24	Coupling Key	087
34	Gasket	614
35**	Retaining Ring	088
37	Grease Seal	653
38	Bearing	647
39	Slinger	478
43	Grease Seal	653
44	Gasket	614
46	Grease Seal	653
47**	Bearing	647
48	Slinger	478
52	Lantern Ring	512
56	Bushing	208
57	Sleeve	208
58	O-Ring	457
60	O-Ring	457
61	Bushing	226
62**	Sleeve	208
63	Drive Pin	360
64**	O-Ring	457
65	Sleeve	208
66	O-Ring	457
68	Drive Pin	104
73*	Drive Pin	104

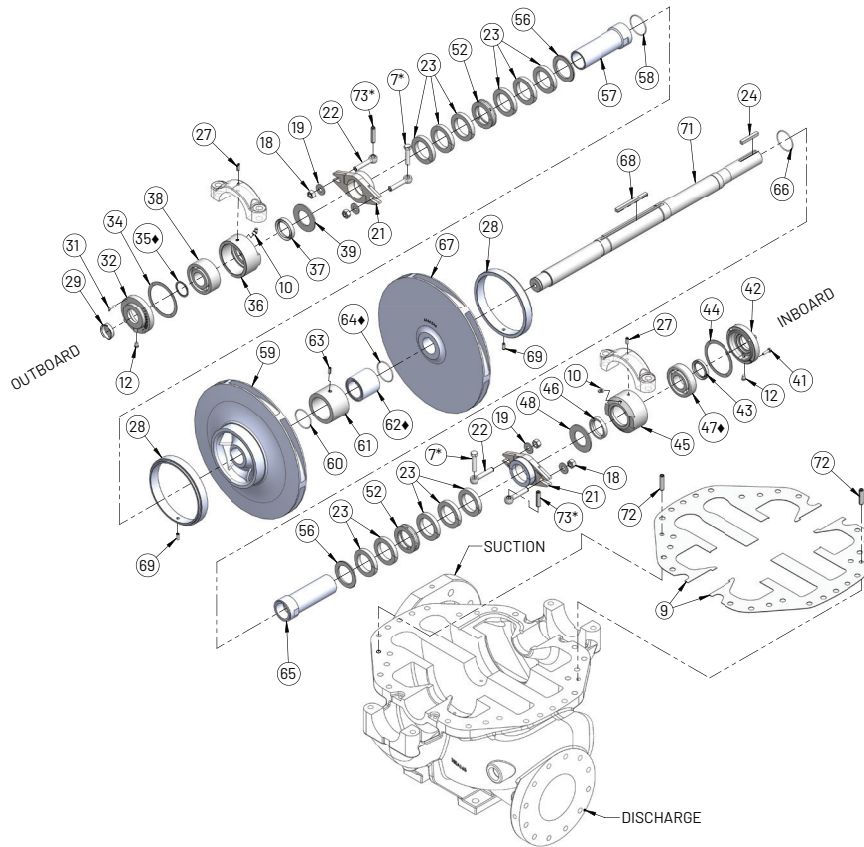
### NOTES

\*PART NO. 73 IS FOR POWER SERIES #2 ONLY. FOR OTHER POWER SERIES; REFER PART NO. 7.

\*\*FOR POWER SERIES 4A & 5A

- PART NO. 35 WILL BE REPLACED BY LOCKNUT & LOCK WASHER, QTY 1 NO. EACH.
- QTY OF PC#47 WOULD BE 2 NOS. (ONE ON EACH END).
- PART NO. 62 AND 64 ARE NOT APPLICABLE.

# 1900 SERIES ROTATING ASSEMBLY WITH PACKING



## PARTS INCLUDED IN ROTATING ASSEMBLY WITH PACKING

NOTE: ROTATING ASSEMBLY ARRIVES PRE-ASSEMBLED FOR EASE OF INSTALLATION.

PART NO.	PART DESCRIPTION	MATERIAL CODES	PART NO.	PART DESCRIPTION	MATERIAL CODES
		BF			BF
7*	Cap Screw	104	45	Catridge	010
9	Gasket	463	46	Grease Seal	653
10	Grease Fitting	651	47**	Bearing	647
12	Plug	087	48	Slinger	478
18	Nut	104	52	Lantern Ring	512
19	Washer	104	56	Bushing	208
21	Gland	010	57	Sleeve	208
22	Swing Bolt	104	58	O-Ring	457
23	Packing	816	59	Impeller	225
24	Coupling Key	087	60	O-Ring	457
27	Pin	360	61	Bushing	226
28	Case Ring	208	62**	Sleeve	208
29	Protector	087	63	Drive Pin	360
31	Cap Screw	082	64**	O-Ring	457
32	Catridge Cap	010	65	Sleeve	208
34	Gasket	614	66	O-Ring	457
35**	Retaining Ring	088	67	Impeller	225
36	Cartridge	010	68	Impeller Key	107
37	Grease Seal	653	69	Pin	360
38	Bearing	647	71	Shaft	063
39	Slinger	478	72	Pin	360
43	Grease Seal	653	73*	Drive Pin	104
44	Gasket	614			

### NOTES

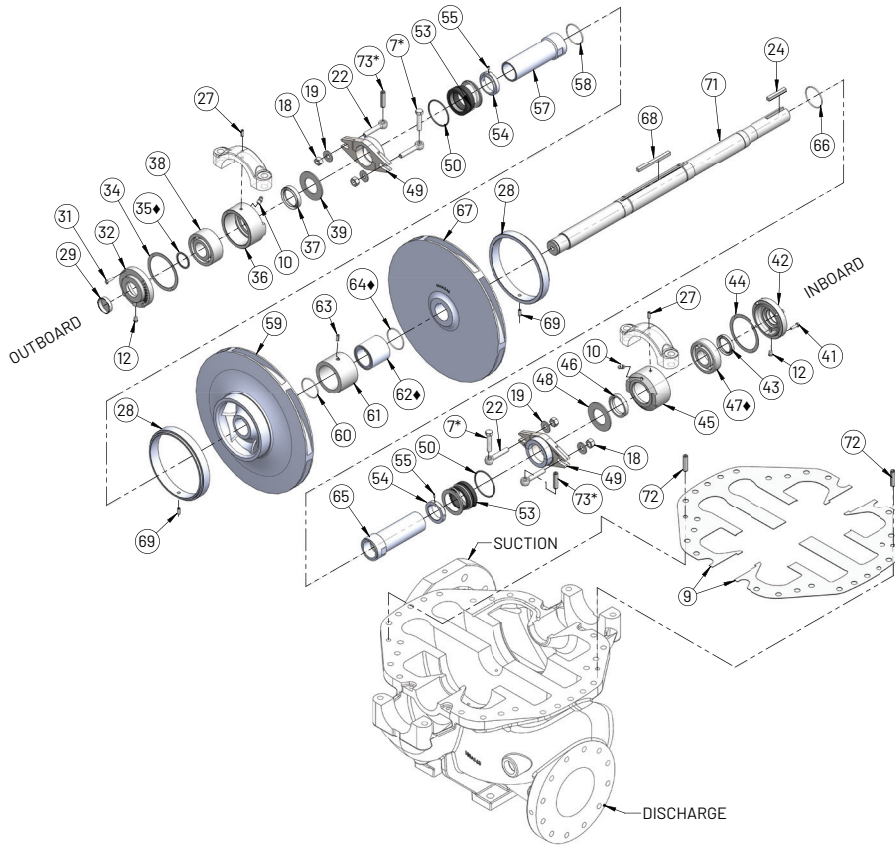
\*PART NO. 73 IS FOR POWER SERIES #2 ONLY. FOR OTHER POWER SERIES; REFER TO PART NO. 7.

\*\*FOR POWER SERIES 4A & 5A

- PART NO. 35 WILL BE REPLACED BY LOCKNUT & LOCK WASHER, QTY 1 NO. EACH.
- QTY OF PART NO. 47 WOULD BE 2 NOS. (ONE ON EACH END).
- PART NO. 62 AND 64 ARE NOT APPLICABLE.



# 1900 SERIES ROTATING ASSEMBLY WITH SEAL



## PARTS INCLUDED IN ROTATING ASSEMBLY WITH SEAL

NOTE: ROTATING ASSEMBLY ARRIVES PRE-ASSEMBLED FOR EASE OF INSTALLATION.

PART NO.	PART DESCRIPTION	MATERIAL CODES	PART NO.	PART DESCRIPTION	MATERIAL CODES
		BF			BF
7*	Cap Screw	104	46	Grease Seal	653
9	Gasket	463	47**	Bearing	647
10	Grease Fitting	651	48	Slinger	478
12	Plug	087	49	Gland	010
18	Nut	104	50	O-Ring	457
19	Washer	104	53	Seal	753
22	Swing Bolt	104	54	Collar	208
24	Coupling Key	087	55	Setscrew	104
27	Pin	360	57	Sleeve	208
28	Case Ring	208	58	O-Ring	457
29	Protector	087	59	Impeller	225
31	Cap Screw	082	60	O-Ring	457
32	Catridge Cap	010	61	Bushing	226
34	Gasket	614	62**	Sleeve	208
35**	Retaining Ring	088	63	Drive Pin	360
36	Cartridge	010	64**	O-Ring	457
37	Grease Seal	653	65	Sleeve	208
38	Bearing	647	66	O-Ring	457
39	Slinger	478	67	Impeller	225
41	Cap Screw	082	68	Impeller Key	107
42	Cartridge Cap	010	69	Pin	360
43	Grease Seal	653	71	Shaft	063
44	Gasket	614	72	Pin	360
45	Catridge	010	73*	Drive Pin	104

### NOTES

\*PART NO. 73 IS FOR POWER SERIES #2 ONLY. FOR OTHER POWER SERIES; REFER TO PART NO. 7.

\*\*FOR POWER SERIES 4A & 5A

- PART NO. 35 WILL BE REPLACED BY LOCKNUT & LOCK WASHER, QTY 1 NO. EACH.
- QTY OF PART NO. 47 WOULD BE 2 NOS. (ONE ON EACH END).
- PART NO. 62 AND 64 ARE NOT APPLICABLE.

# 1900 SERIES KIT SELECTION TABLE

PUMP SIZE	POWER SERIES	PACKING KIT	SEAL KIT	OVERHAUL KIT WITH PACKING	OVERHAUL KIT WITH SEALS	ROTATING ASSY W/ PACKING (BRZ SLEEVES)	ROTATING ASSY W/ PACKING (HARDENED 440C SS SLEEVES)	ROTATING ASSY W/ SEALS (BRZ SLEEVES)	ROTATING ASSY W/ SEALS (316 SS SLEEVES)
2-1923A*	2	476-0643-644	476-0647-644	476-0377-644	476-0389-644	700-0032-644	700-0432-644	700-0073-644	700-0473-644
2-1923A**						700-0444-644	700-0446-644	700-0447-644	700-0449-644
2-1923B						700-0033-644	700-0433-644	700-0074-644	700-0474-644
2.5-1922A*						700-0034-644	700-0434-644	700-0075-644	700-0475-644
2.5-1922A**						700-0450-644	700-0452-644	700-0453-644	700-0455-644
3-1923A	3	476-0644-644	476-0648-644	476-0378-644	476-0390-644	700-0035-644	700-0435-644	700-0076-644	700-0476-644
3-1923B						700-0036-644	700-0436-644	700-0077-644	700-0477-644
4-1922						700-0037-644	700-0437-644	700-0078-644	700-0478-644
5-1922	4	476-0645-644	476-0649-644	476-0379-644	476-0391-644	700-0038-644	700-0438-644	700-0079-644	700-0479-644
5-1924	4A	476-1090-644	476-1795-644	476-1092-644	476-1796-644	700-1014-644	700-1015-644	700-1016-644	700-1017-644
6-1923	5	476-0646-644	476-0650-644	476-0380-644	476-0392-644	700-0825-644	700-0848-644	700-0847-644	700-0849-644
6-1923B						700-0845-644	700-1022-644	700-1023-644	700-1024-644
6-1922A						700-0039-644	700-0439-644	700-0080-644	700-0480-644
6-1922B						700-0040-644	700-0440-644	700-0081-644	700-0481-644
6-1924						5A	476-1091-644	476-1797-644	476-1093-644

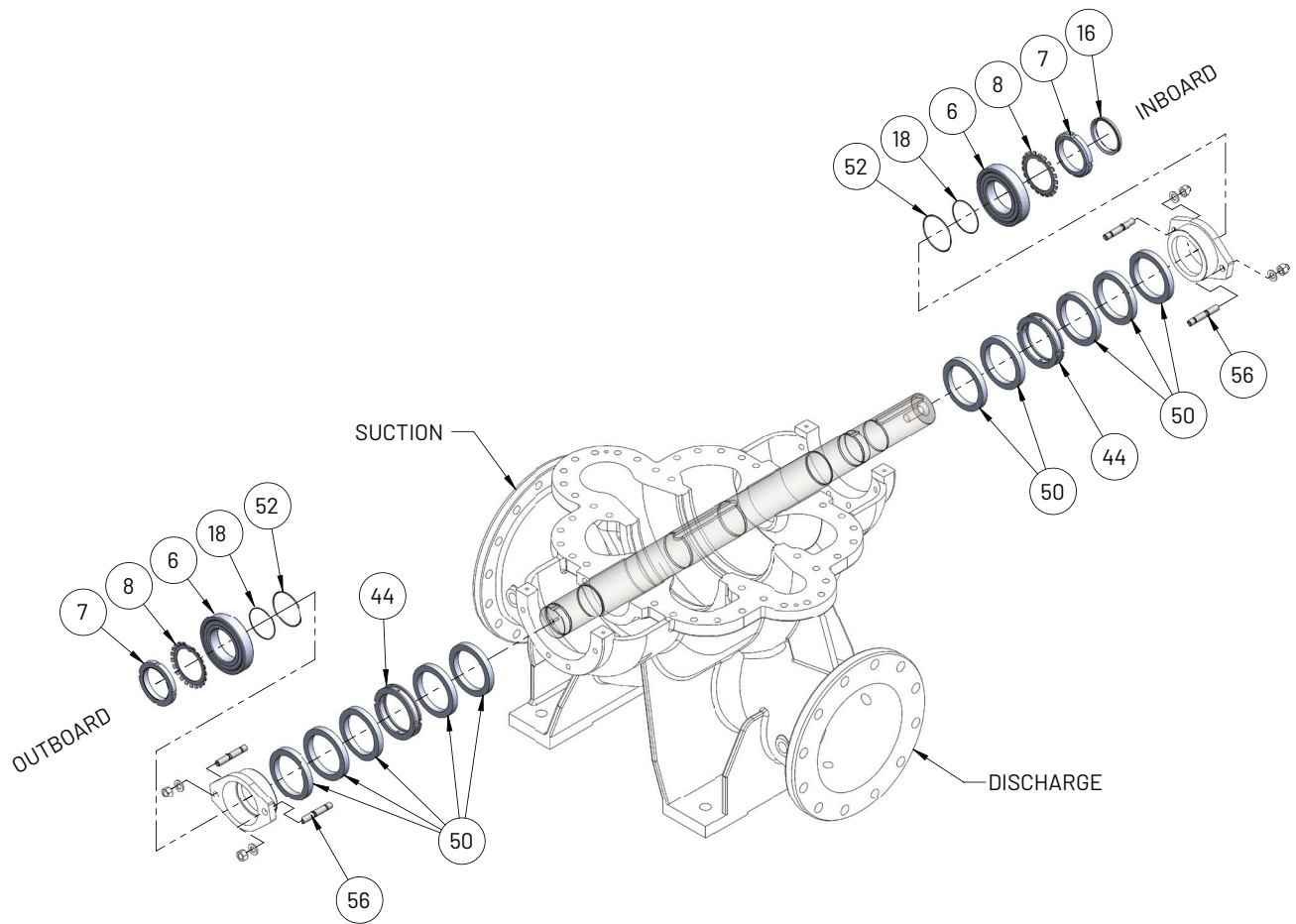
## NOTES

1. THE ROTATING ASSEMBLIES LISTED ABOVE ARE IN BRONZE FITTED CONSTRUCTION (644). IF NO PRICE IS LISTED IN THE MASTER PARTS PRICE LIST, REFER TO FACTORY.
2. FOR CHLORINATED WATER, ELEMENTS MAY BE AVAILABLE WITH 208 OR 243 BRONZE IMPELLERS. REFER TO FACTORY.

\*TO BE USED FOR IMPELLERS LARGER THAN 9" DIAMETER.

\*\*TO BE USED FOR IMPELLERS 9" DIAMETER OR SMALLER, OR FOR PUMPS OPERATING AT 3500 RPM.

# HGT SERIES PACKING REPAIR KIT



## PARTS INCLUDED IN PACKING REPAIR KIT

PART NO.	PART DESCRIPTION
6	Deep Groove Ball Bearing
7	Lock Nut
8	Lock Nut
16	V-Ring
18	O-Ring
44	Lantern Ring
50	Gland Packing
52	O-Ring
56	Gland Stud
-	Sealant (Liquid Gasket)

## PACKING REPAIR KIT SELECTION TABLE

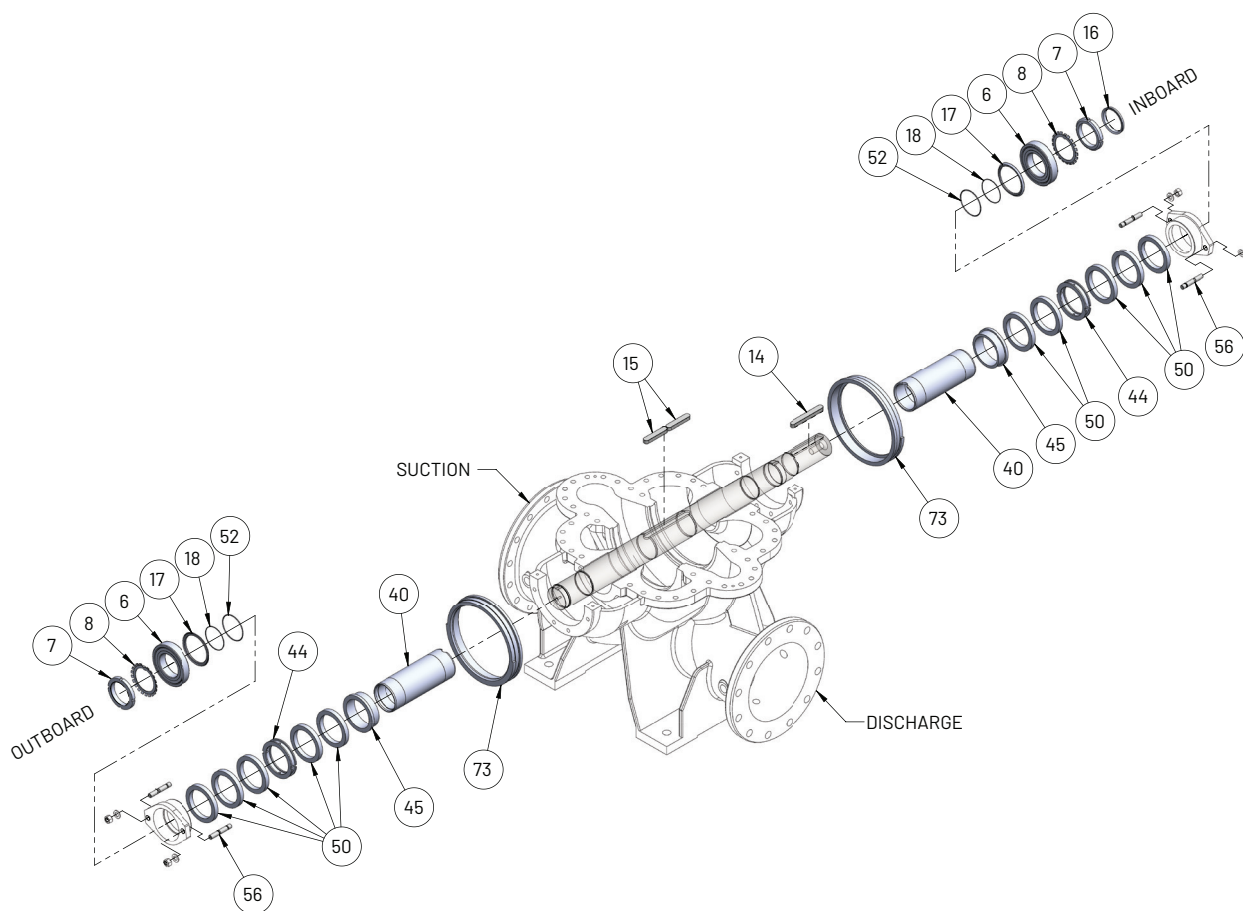
PUMP SIZE*	PACKING REPAIR KIT
HGT1-200.500A	NP018816014P
HGT1-250.400	NP018814014P
HGT1-250.500	NP018812014P
HGT1-300.500	NP018818014P

## NOTES

1. ROTATING ASSEMBLIES WILL BE BUILT ON ORDER BASIS; REFER TO FACTORY.

\*NOT ALL PUMP SIZES SHOWN; PLEASE CONTACT FACTORY FOR OTHER MODELS NOT SHOWN.

# HGT SERIES OVERHAUL KIT



## PARTS INCLUDED IN OVERHAUL KIT

PART NO.	PART DESCRIPTION
6	Deep Groove Ball Bearing
7	Lock Nut
8	Lock Nut
14	Key
15	Key
16	V-Ring
17	Seal
18	O-Ring
40	Shaft Sleeve
44	Lantern Ring
45	Packing Seating Ring
50	Gland Packing
52	O-Ring
56	Gland Stud
73	Wear Ring
#	Sealant (Liquid Gasket)

## OVERHAUL KIT SELECTION TABLE

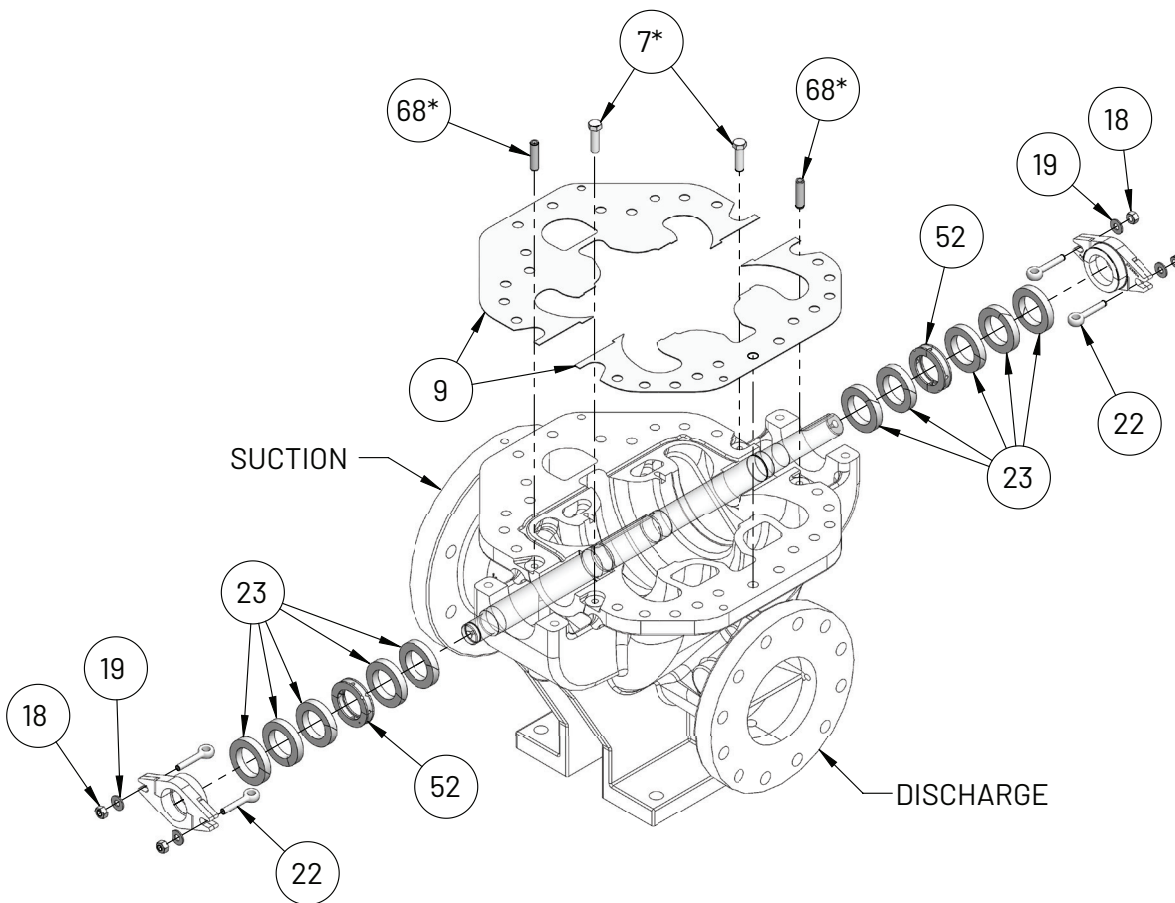
PUMP SIZE*	PACKING REPAIR KIT
HGT1-200.500A	NP018817014P
HGT1-250.400	NP018815014P
HGT1-250.500	NP018813014P
HGT1-300.500	NP018819014P

### NOTES

1. ROTATING ASSEMBLY WILL BE BUILT ON ORDER BASIS; REFER TO FACTORY.

\*NOT ALL PUMP SIZES SHOWN; PLEASE CONTACT FACTORY FOR OTHER MODELS NOT SHOWN.

# 1820F & 1840F SERIES PACKING REPAIR KIT



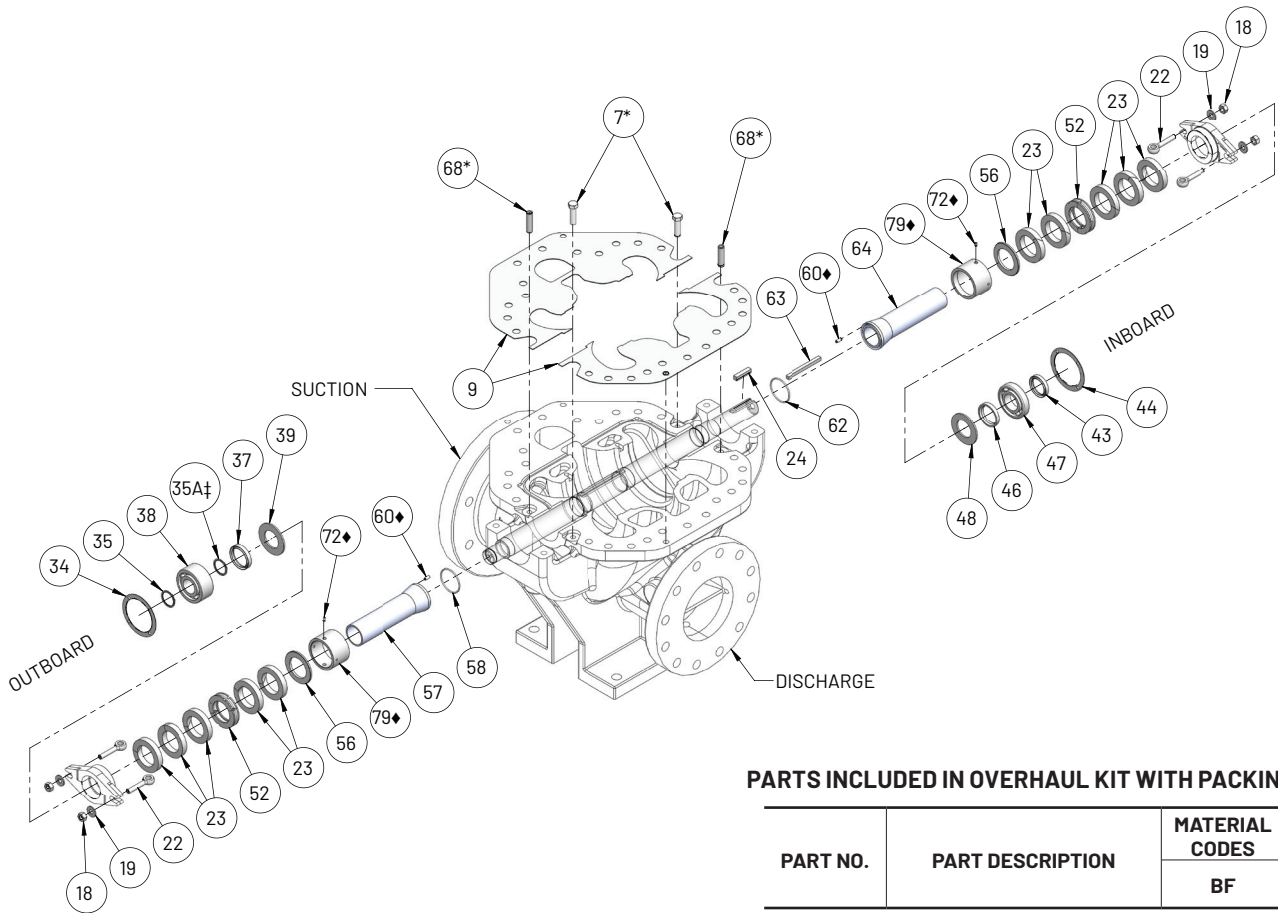
## PARTS INCLUDED IN PACKING REPAIR KIT

PART NO.	PART DESCRIPTION	MATERIAL CODES
		BF
7*	Cap Screw	104
9	Gasket	463
18	Nut	104
19	Washer	104
22	Swing Bolt	104
23	Packing	816
52	Lantern Ring	512
68*	Drive Pin	104

### NOTES

\*PART NO. 68 IS FOR POWER SERIES #1 & #2 ONLY. FOR OTHER POWER SERIES; REFER TO PART NO. 7.

# 1820F & 1840F SERIES OVERHAUL KIT WITH PACKING



## PARTS INCLUDED IN OVERHAUL KIT WITH PACKING

PART NO.	PART DESCRIPTION	MATERIAL CODES
		BF
7	Cap Screw	104
9	Gasket	463
18	Nut	104
19	Washer	104
22	Swing Bolt	104
23	Packing	816
24	Coupling Key	087
34	Gasket	614
35	Retaining Ring	088
35A	Retaining Ring	088
37	Grease Seal	653
38	Bearing	647
39	Slinger	478
43	Grease Seal	653
44	Gasket	614
46	Grease Seal	653
47	Bearing	647
48	Slinger	478
52	Lantern Ring	512
56	Bushing	208
57	Sleeve	208
58	O-Ring	457
60**	Sleeve Pin	104
62	O-Ring	457
63	Impeller Key	107
64	Sleeve	208
68*	Drive Pin	104
72**	Set Screw	113
79**	Sleeve Collar	208

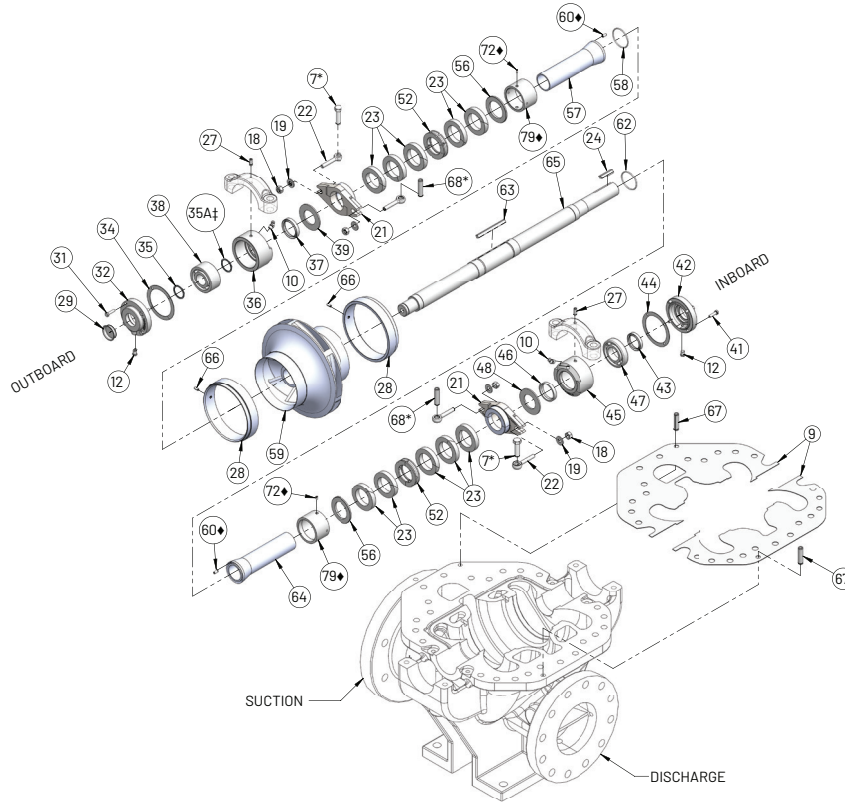
### NOTES

\*PART NO. 68 IS FOR POWER SERIES #1 & #2 ONLY. FOR OTHER POWER SERIES; REFER TO PART NO. 7.

‡PART NO. 35A IS USED ON POWER SERIES 6B, 7 & 7A ONLY.

\*\*PART NOS. 60, 72 & 79 ARE USED FOR 10X12X18D ONLY.

# 1820F & 1840F SERIES ROTATING ASSEMBLY WITH PACKING



## PARTS INCLUDED IN ROTATING ASSEMBLY WITH PACKING

NOTE: ROTATING ASSEMBLY ARRIVES PRE-ASSEMBLED FOR EASE OF INSTALLATION.

PART NO.	PART DESCRIPTION	MATERIAL CODES	PART NO.	PART DESCRIPTION	MATERIAL CODES
		BF			BF
7	Cap Screw	104	42	Cartridge Cap	010
9	Gasket	463	43	Grease Seal	653
10	Grease Fitting	651	44	Gasket	614
12	Plug	087	45	Cartridge	010
18	Nut	104	46	Grease Seal	653
19	Washer	104	47	Bearing	647
21	Gland	010	48	Slinger	478
22	Swing Bolt	104	52	Lantern Ring	512
23	Packing	816	56	Bushing	208
24	Coupling Key	087	57	Sleeve	208
27	Pin	360	58	O-Ring	457
28	Case Ring	208	59	Impeller	227
29	Protector	087	60**	Sleeve Pin	104
31	Cap Screw	082	62	O-Ring	457
32	Cartridge Cap	010	63	Impeller Key	107
34	Gasket	614	64	Sleeve	208
35	Retaining Ring	088	65	Shaft	063
35A‡	Retaining Ring	088	66	Pin	360
36	Cartridge	010	67	Pin	360
37	Grease Seal	653	68*	Drive Pin	104
38	Bearing	647	72**	Set Screw	113
39	Slinger	478	79**	Sleeve Collar	208
41	Cap Screw	082			

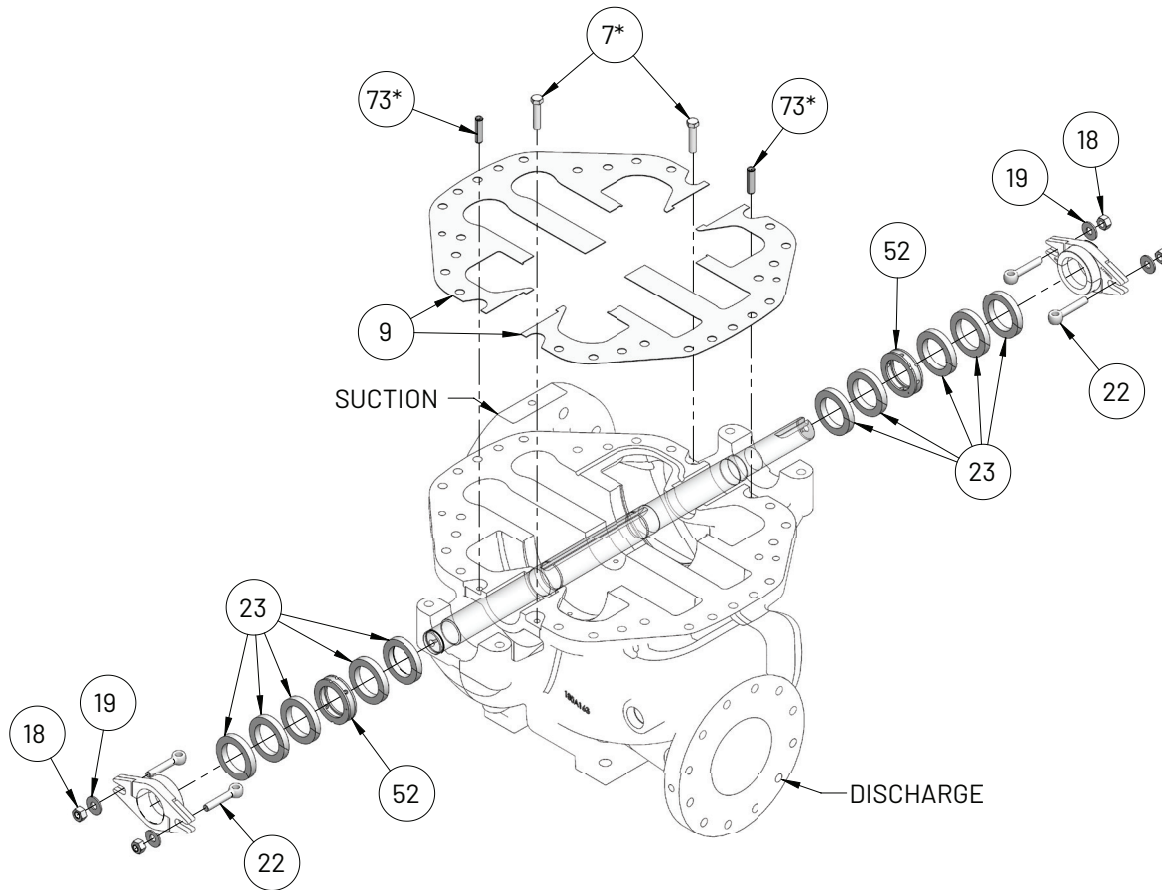
### NOTES

\*PART NO. 68 IS FOR POWER SERIES #1 & #2 ONLY. FOR OTHER POWER SERIES; REFER TO PART NO. 7.

‡PART NO. 35A IS USED ON POWER SERIES 6B, 7 & 7A ONLY.

\*\*PART NO. 60, 72 & 79 ARE USED FOR 10X12X18D ONLY.

# 1900F SERIES PACKING REPAIR KIT



## PARTS INCLUDED IN PACKING REPAIR KIT

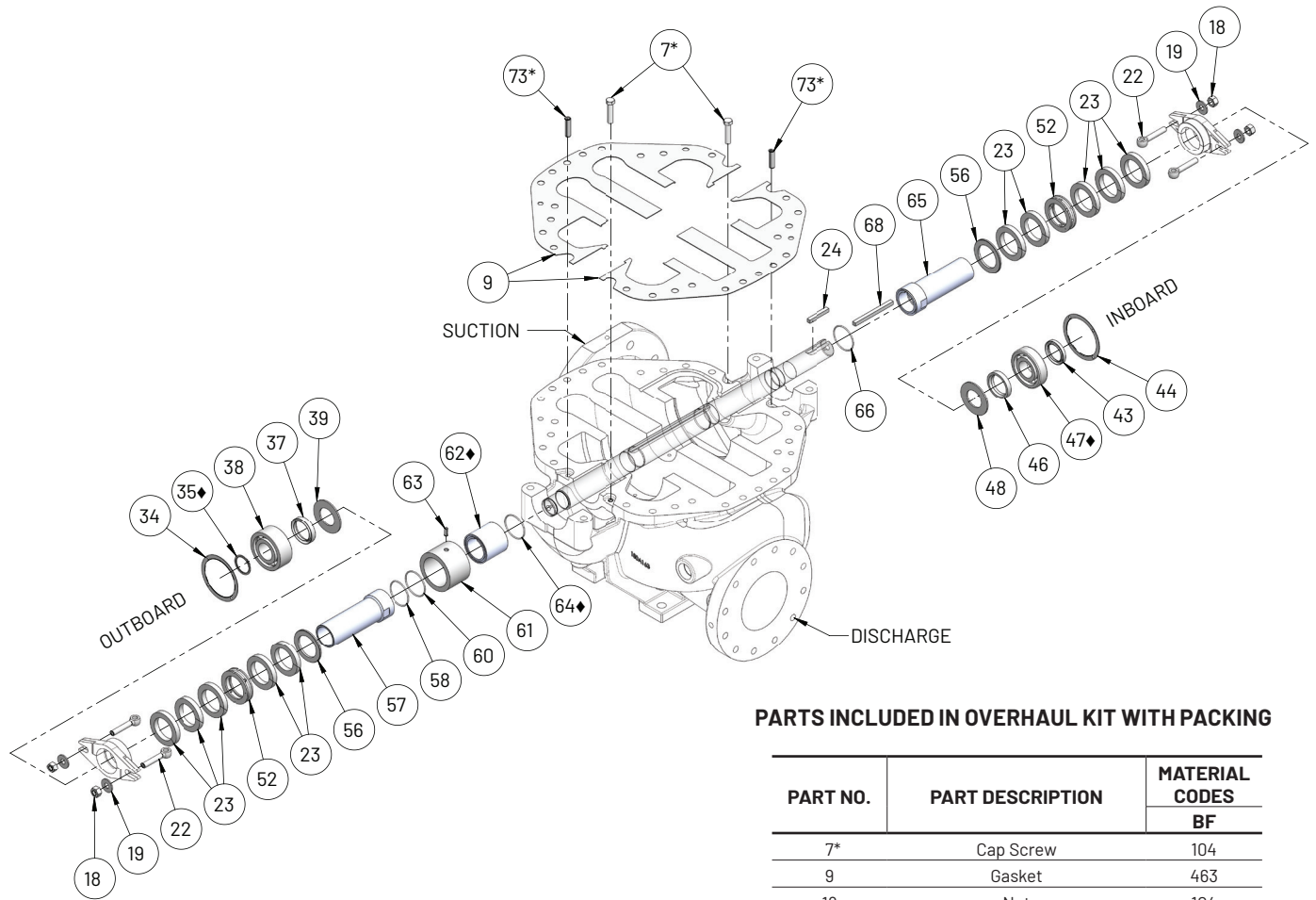
PART NO.	PART DESCRIPTION	MATERIAL CODES
		BF
7*	Cap Screw	104
9	Gasket	463
18	Nut	104
19	Washer	104
22	Swing Bolt	104
23	Packing	816
52	Lantern Ring	512
73*	Drive Pin	104

### NOTES

\*PART NO. 68 IS FOR POWER SERIES #1 & #2 ONLY. FOR OTHER POWER SERIES; REFER TO PART NO. 7.



# 1900F SERIES OVERHAUL KIT WITH PACKING



## PARTS INCLUDED IN OVERHAUL KIT WITH PACKING

PART NO.	PART DESCRIPTION	MATERIAL CODES
		BF
7*	Cap Screw	104
9	Gasket	463
18	Nut	104
19	Washer	104
22	Swing Bolt	104
23	Packing	816
24	Coupling Key	087
34	Gasket	614
35**	Retaining Ring	088
37	Grease Seal	653
38	Bearing	647
39	Slinger	478
43	Grease Seal	653
44	Gasket	614
46	Grease Seal	653
47**	Bearing	647
48	Slinger	478
52	Lantern Ring	512
56	Bushing	208
57	Sleeve	208
58	O-Ring	457
60	O-Ring	457
61	Bushing	226
62**	Sleeve	208
63	Drive Pin	360
64**	O-Ring	457
65	Sleeve	208
66	O-Ring	457
68	Impeller Key	107
73*	Drive Pin	104

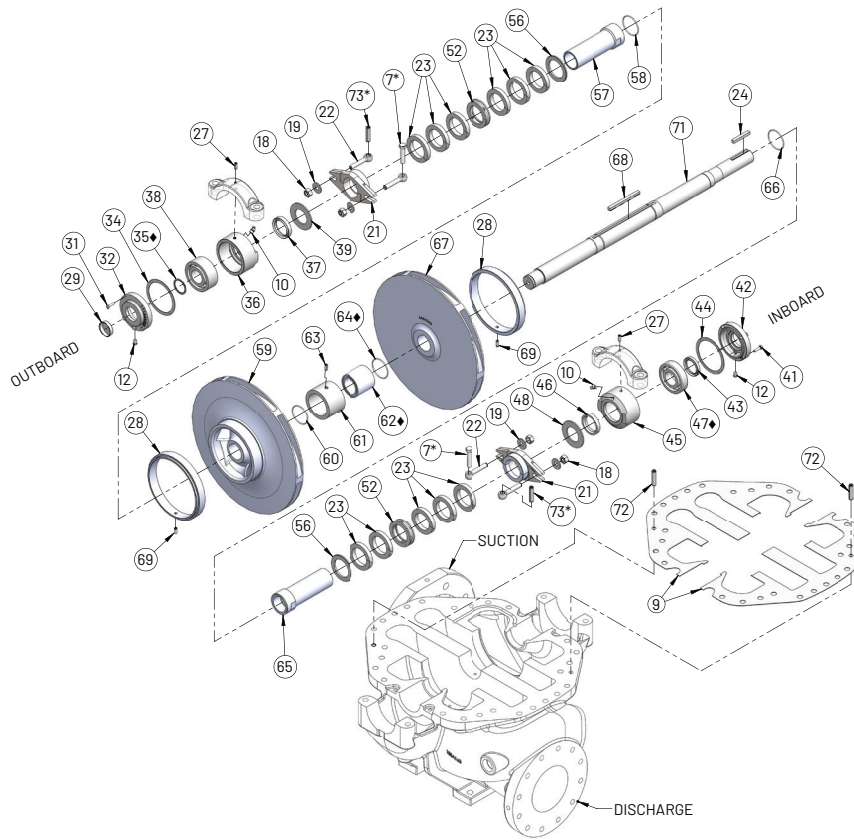
### NOTES

\*PART NO. 73 IS FOR POWER SERIES #2 ONLY. FOR OTHER POWER SERIES; REFER TO PART NO. 7.

\*\*FOR POWER SERIES 4A & 5A

- PART NO. 35 WILL BE REPLACED BY LOCKNUT & LOCK WASHER, QTY 1 NO. EACH.
- QTY OF PART NO. 47 WOULD BE 2 NOS. (ONE ON EACH END).
- PART NO. 62 AND 64 ARE NOT APPLICABLE.

# 1900F SERIES ROTATING ASSEMBLY WITH PACKING



## PARTS INCLUDED IN ROTATING ASSEMBLY WITH PACKING

NOTE: ROTATING ASSEMBLY ARRIVES PRE-ASSEMBLED FOR EASE OF INSTALLATION.

PART NO.	PART DESCRIPTION	MATERIAL CODES	PART NO.	PART DESCRIPTION	MATERIAL CODES
		BF			BF
7*	Cap Screw	104	44	Gasket	614
9	Gasket	463	45	Cartridge	010
10	Grease Fitting	651	46	Grease Seal	653
12	Plug	087	47**	Bearing	647
18	Nut	104	48	Slinger	478
19	Washer	104	52	Lantern Ring	512
21	Gland	010	56	Bushing	208
22	Swing Bolt	104	57	Sleeve	208
23	Packing	816	58	O-Ring	457
24	Coupling Key	087	59	Impeller	225
27	Pin	360	60	O-Ring	457
28	Case Ring	208	61	Bushing	226
29	Protector	087	62**	Sleeve	208
31	Cap Screw	082	63	Drive Pin	360
32	Cartridge Cap	010	64**	O-Ring	457
34	Gasket	614	65	Sleeve	208
35**	Retaining Ring	088	66	O-Ring	457
36	Cartridge	010	67	Impeller	225
37	Grease Seal	653	68	Impeller Key	107
38	Bearing	647	69	Pin	360
39	Slinger	478	71	Shaft	063
41	Cap Screw	082	72	Pin	360
42	Cartridge Cap	010	73*	Drive Pin	104
43	Grease Seal	653			

### NOTES

\*PART NO. 73 IS FOR POWER SERIES #2 ONLY. FOR OTHER POWER SERIES; REFER TO PART NO. 7.

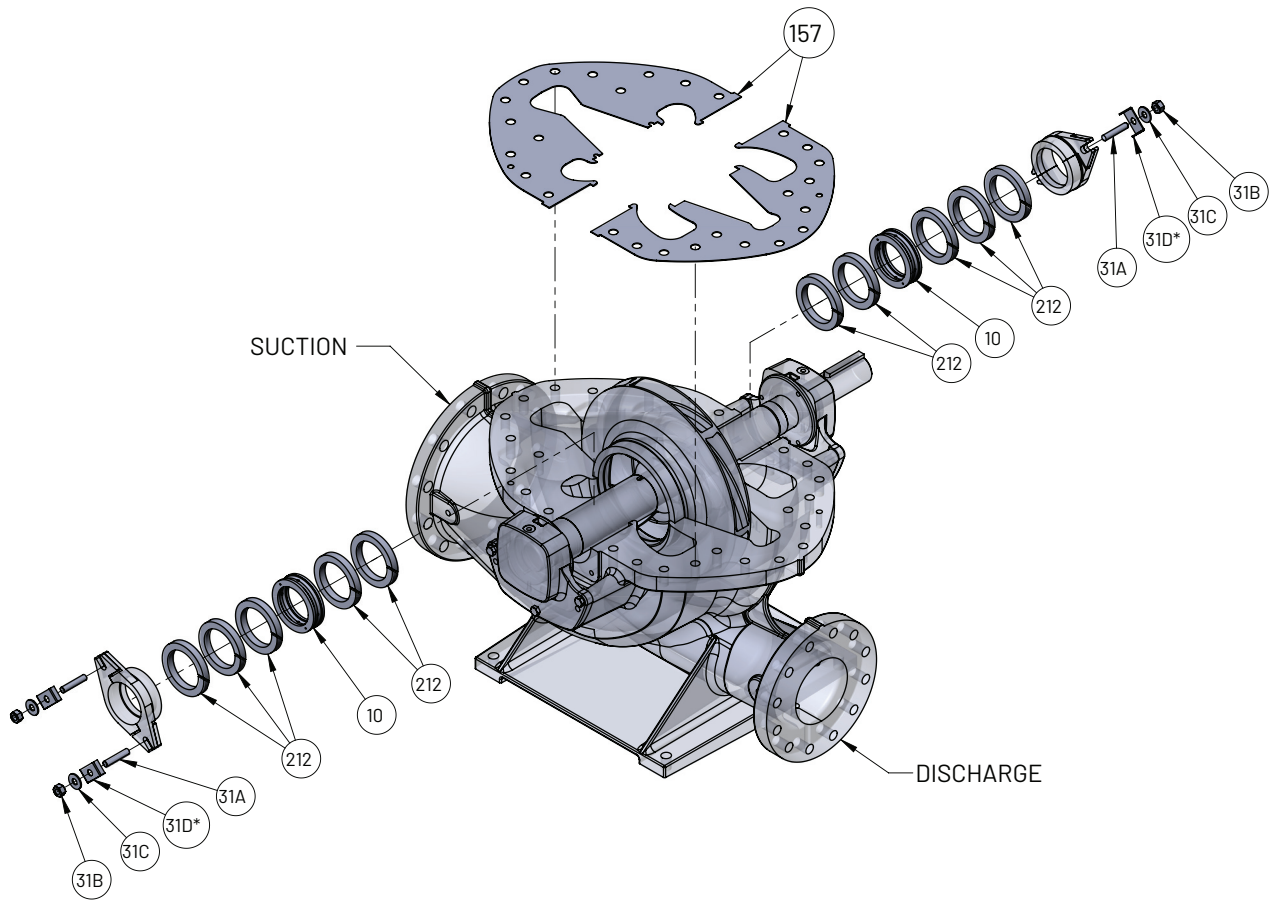
\*\*FOR POWER SERIES 4A & 5A

- PART NO. 35 WILL BE REPLACED BY LOCKNUT & LOCK WASHER, QTY 1 NO. EACH.
- QTY OF PART NO. 47 WOULD BE 2 NOS. (ONE ON EACH END).
- PART NOS. 62 AND 64 ARE NOT APPLICABLE.

# 1800F & 1900F SERIES KIT SELECTION TABLE

PUMP SIZE	POWER SERIES	PACKING KIT	OVERHAUL KIT	ROTATING ASSY W/ PACKING (BRZ SLEEVES)	ROTATING ASSY W/ PACKING (HARDENED 440C SS SLEEVES)			
<b>1800F SERIES</b>								
2.5-1823BF/2.5-1843BF	2	476-0630-644	476-0371-644	700-0084-644	700-0384-644			
3-1824F/3-1844F				700-0006-644	700-0306-644			
3-1824AF				700-0952-644	700-0956-644			
4-1823AF/4-1843AF	3	476-0631-644	476-0372-644	700-0009-644	700-0309-644			
4-1823CF/4-1843CF				700-0023-644	700-0323-644			
4-1824F/4-1844F				700-0012-644	700-0312-644			
4-1823DF/4-1823DF				700-0742-644	N/A			
4-1823EF				700-0946-644	700-0957-644			
5-1822BF/5-1842BF				700-0101-644	700-0958-644			
5-1822CF/5-1842CF	4	476-0632-644	476-0451-644	700-0484-644	700-0405-644			
5-1822DF				700-0496-644	700-0959-644			
5-1823F/5-1843F			476-0373-644	700-0014-644	700-0314-644			
5-1823AF				700-0261-644	700-0960-644			
5-1823BF				700-0947-644	700-0961-644			
5-1824F/5-1844F				700-0015-644	700-0315-644			
6-1822F/6-1842F				700-0025-644	700-0325-644			
6-1822HHF				700-0745-644	700-1004-644			
6-1822HHAF				700-1012-644	700-0962-644			
6-1823F/6-1843F				5	476-0633-644	476-0374-644	700-0018-644	700-0318-644
6-1823BF/6-1843BF	700-0250-644	700-0963-644						
6-1823CF/6-1843CF	700-0333-644	700-0964-644						
6-1823EF	700-0948-644	700-0965-644						
6-1824BF/6-1844BF	700-0486-644	700-0407-644						
6-1824CF/6-1844CF	700-0487-644	700-0408-644						
6-1824DF	700-0949-644	700-0966-644						
6-1825F/6-1845F	700-0019-644	700-0319-644						
8-1822F/8-1842F	700-0027-644	700-0327-644						
8-1824BF/8-1844BF	700-0021-644	700-0321-644						
8-1824CF	700-0953-644	700-0967-644						
6-1823HHF	5A	476-0913-644	476-0918-644				700-0743-644	700-1006-644
6-1823HHAF							700-1013-644	700-0968-644
6-1823HHBF							700-0950-644	700-0969-644
8-1825F	6B	476-0634-644	476-0375-644	700-0658-644	700-0409-644			
8-1825AF				700-0678-644	700-0668-644			
10-1823CF				700-0488-644	700-0410-644			
10-1824F				700-0089-644	700-0389-644			
8-1826F	7	476-0635-644	476-0376-644	700-0831-644	700-1001-644			
12-1824AF	7A	476-0914-644	476-0919-644	700-0540-644	700-0665-644			
10-1824DF				700-0693-644	700-1009-644			
<b>1900F SERIES</b>								
4-1922F	3	476-0644-644	476-0378-644	700-0037-644	700-0437-644			
5-1922F	4	476-0645-644	476-0379-644	700-0038-644	N/A			
5-1921F	4A	476-1090-644	476-1092-644	700-1014-644	700-1015-644			
6-1923F	5	476-0646-644	476-0380-644	700-0825-644	700-0848-644			
6-1923BF				700-0845-644	700-1022-644			
6-1922AF				700-0039-644	700-0439-644			
6-1922BF				700-0040-644	700-0440-644			
6-1924F				5A	476-1091-644	476-1093-644	700-1018-644	700-1019-644
6-1924AF	700-0954-644	700-0970-644						

# 2800F & 5800F SERIES WITH BOLT-ON BEARING ARMS - PACKING REPAIR KIT



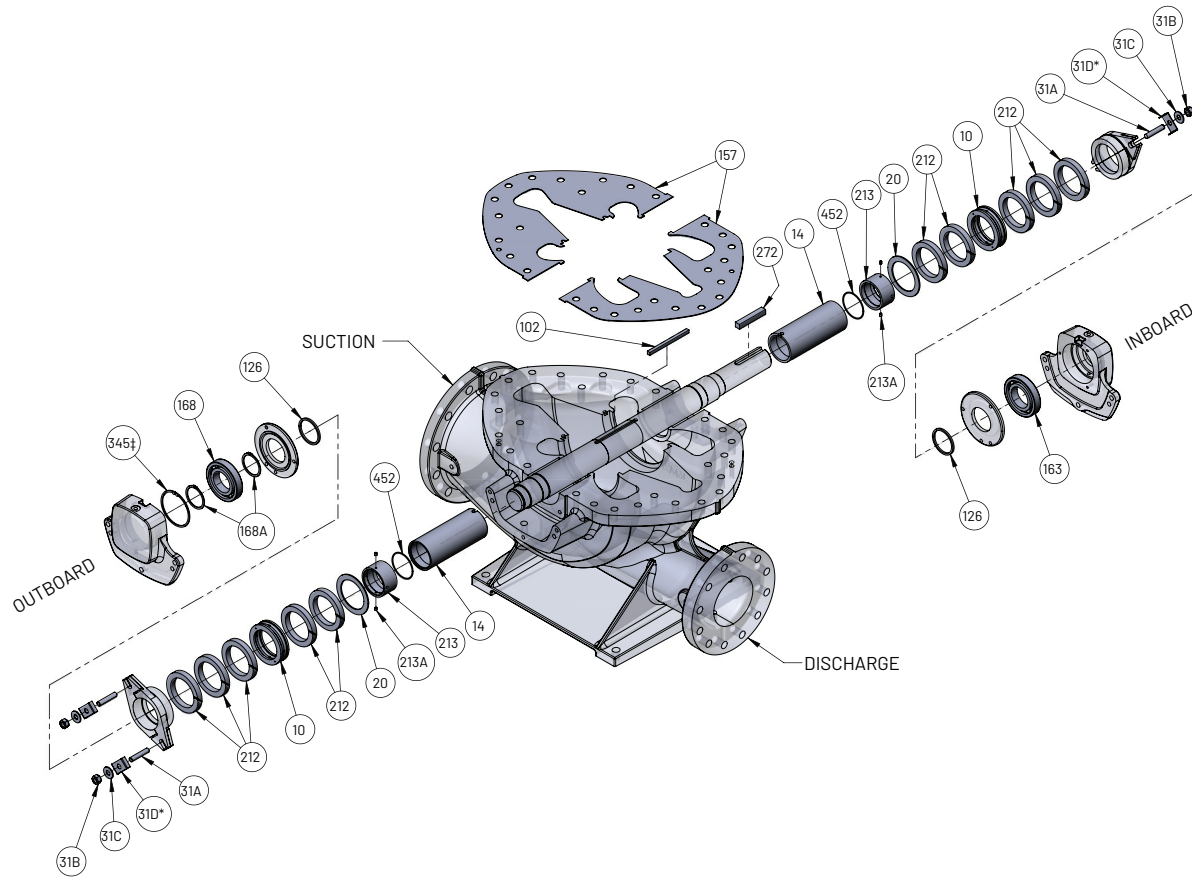
## PARTS INCLUDED IN PACKING REPAIR KIT

PART NO.	PART DESCRIPTION	MATERIAL CODES
		644
10	Lantern Ring	509
31A	Gland Stud	104
31B	Gland Nut	104
31C	Gland Washer	104
31D*	Gland Clip	104
157	Casing Gasket	463
212	Packing Ring	802

### NOTES

\*PART NO. 31D IS USED FOR PUMP MODEL 4-2873AF ONLY.

# 2800F & 5800F SERIES WITH BOLT-ON BEARING ARMS - OVERHAUL KIT WITH PACKING



## PARTS INCLUDED IN OVERHAUL KIT WITH PACKING

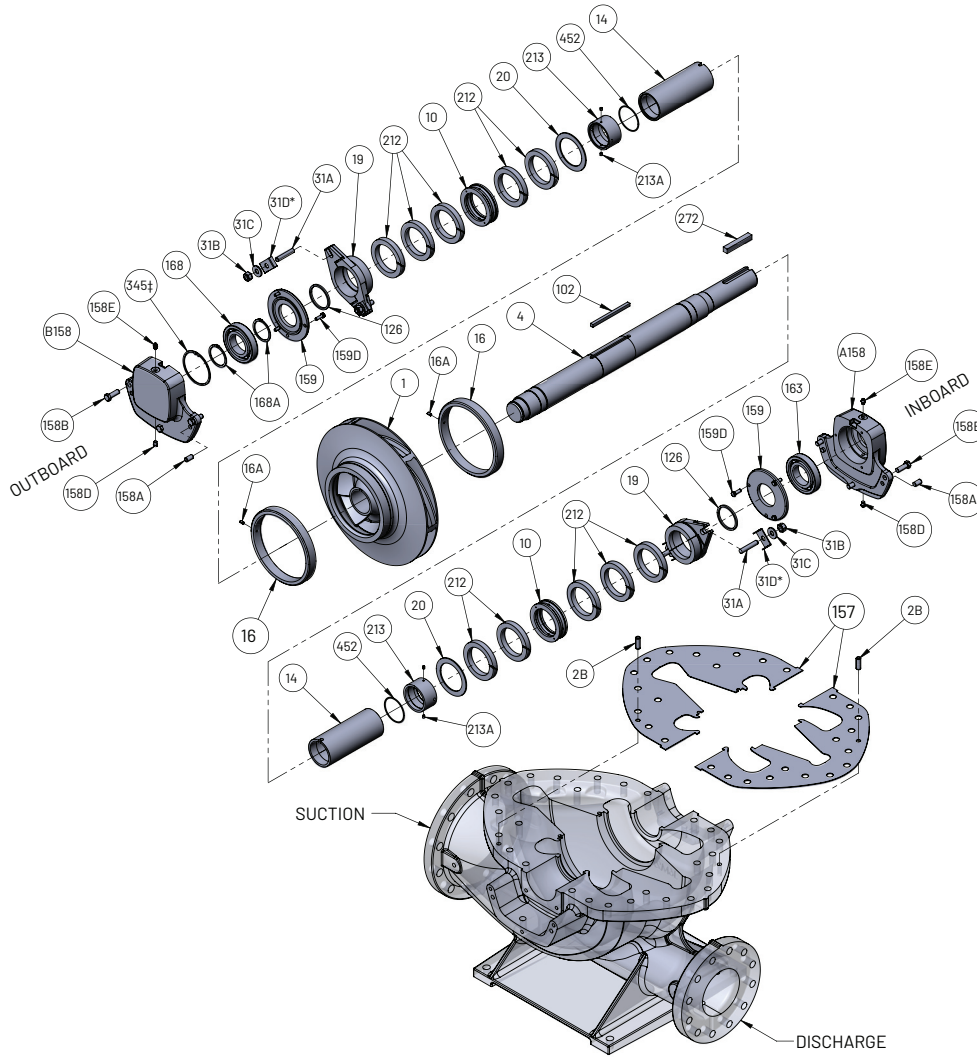
PART NO.	PART DESCRIPTION	MATERIAL CODES
		644
10	Lantern Ring	509
14	Shaft Sleeve	212
20	Stuffing Box Washer	208
31A	Gland Stud	104
31B	Gland Nut	104
31C	Gland Washer	104
31D*	Gland Clip	104
102	Impeller Key	087
126	Water Slinger	999
157	Casing Gasket	463
163	Radial Bearing	647
168	Thrust Bearing	647
168A	Retaining Ring	088
212	Packing Ring	802
213	Sleeve Nut	208
213A	Set Screw	113
272	Coupling Key	087
345‡	Retaining Ring	088
452	Shaft Sleeve O-Ring	457

### NOTES

\*PART NO. 31D IS USED FOR PUMP MODEL 4-2873AF ONLY.

‡PART NO. 345 IS USED FOR PUMP MODEL 5-5876F & 6-5876F ONLY.

# 2800F & 5800F SERIES WITH BOLT-ON BEARING ARMS - ROTATING ASSEMBLY WITH PACKING



## PARTS INCLUDED IN ROTATING ASSEMBLY WITH PACKING

NOTE: ROTATING ASSEMBLY ARRIVES PRE-ASSEMBLED FOR EASE OF INSTALLATION.

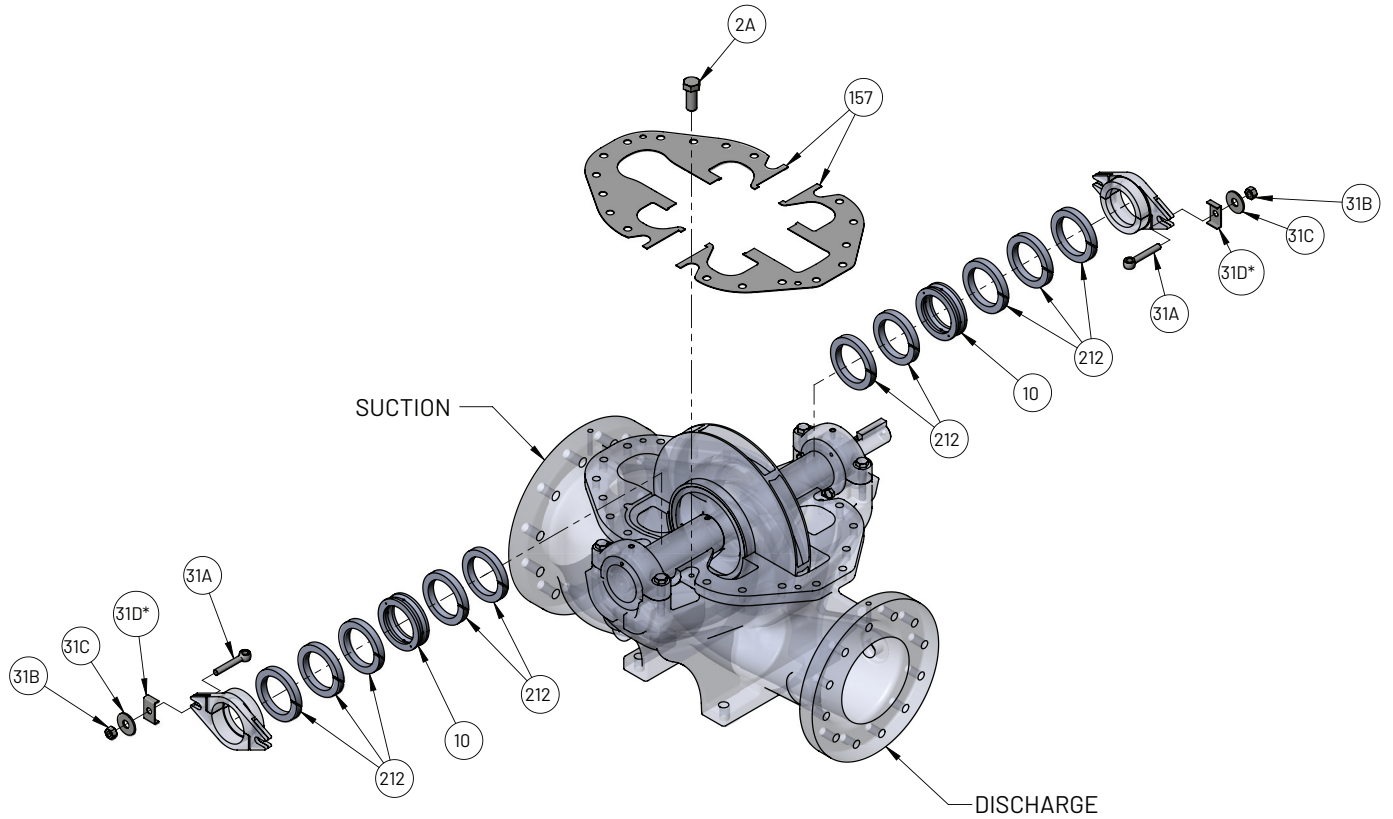
PART NO.	PART DESCRIPTION	MATERIAL CODES	PART NO.	PART DESCRIPTION	MATERIAL CODES
		644			644
1	Impeller	225	A158	Radial Bearing Cartridge	010
2B	Pin, Casing Alignment	087	B158	Thrust Bearing Cartridge	010
4	Shaft	072	158A	Pin, Bearing Housing	087
10	Lantern Ring	509	158B	Cap Screw	082
14	Shaft Sleeve	212	158D	Pipe Plug	087
16	Case Wear Ring	208	158E	Grease Fitting	651
16A	Pin, Case Wear Ring	208	159	Bearing Housing Cover	010
19	Packing Gland	104	159D	Cap Screw	082
20	Stuffing Box Washer	208	163	Radial Bearing	647
31A	Gland Stud	104	168	Thrust Bearing	647
31B	Gland Nut	104	168A	Retaining Ring	088
31C	Gland Washer	104	212	Packing Ring	802
31D*	Gland Clip	104	213	Sleeve Nut	208
102	Impeller Key	087	213A	Set Screw	113
126	Water Slinger	999	272	Coupling Key	087
157	Casing Gasket	463	345‡	Retaining Ring	088

### NOTES

\*PART NO. 31D IS USED FOR PUMP MODEL 4-2873AF ONLY.

‡PART NO. 345 IS USED FOR PUMP MODEL 5-5876F & 6-5876F ONLY.

# 5800F SERIES WITH INTEGRAL BEARING ARMS - PACKING REPAIR KIT



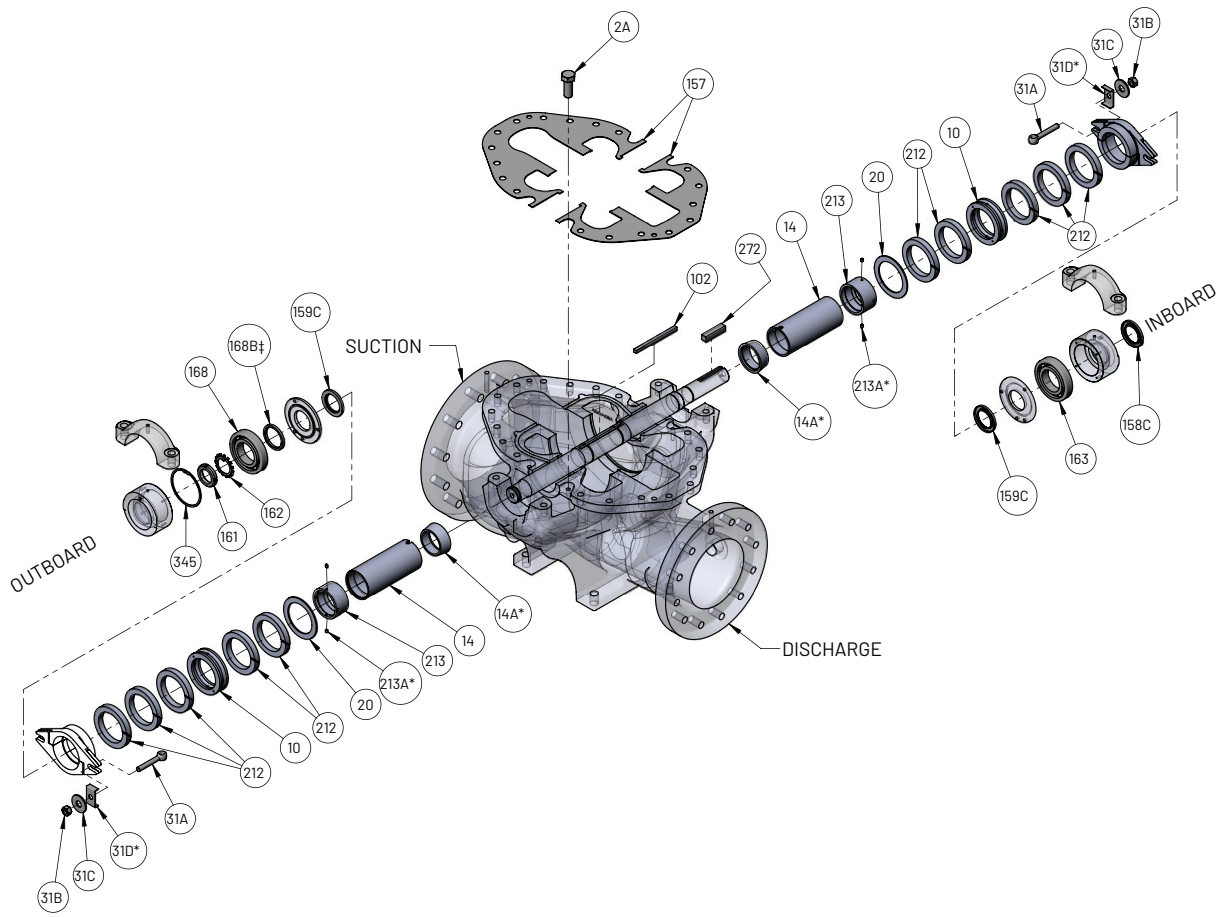
## PARTS INCLUDED IN PACKING REPAIR KIT

PART NO.	PART DESCRIPTION	MATERIAL CODES
		644
2A	Cap Screw	082
10	Lantern Ring	509
31A	Swing Bolt	104
31B	Gland Nut	104
31C	Gland Washer	104
31D*	Gland Clip	104
157	Casing Gasket	463
212	Packing Ring	802

### NOTES

\*PART NO. 31D IS USED FOR PUMP MODEL 10-5824F ONLY.

# 5800F SERIES WITH INTEGRAL BEARING ARMS - OVERHAUL KIT WITH PACKING



## PARTS INCLUDED IN OVERHAUL KIT WITH PACKING

PART NO.	PART DESCRIPTION	MATERIAL CODES
		644
2A	Cap Screw	082
10	Lantern Ring	509
14	Shaft Sleeve	212
14A*	Shaft Sleeve Spacer	212
20	Stuffing Box Washer	208
31A	Swing Bolt	104
31B	Gland Nut	104
31C	Gland Washer	104
31D*	Gland Clip	104
102	Impeller Key	087
157	Casing Gasket	463
158C	Lip Seal	653
159C	Lip Seal	653
161	Lock Nut	080
162	Lock Washer	080
163	Radial Bearing	647
168	Thrust Bearing	647
168B‡	Bearing Spacer	063
212	Packing Ring	802
213	Sleeve Nut	208
213A*	Set Screw	113
272	Coupling Key	087
345	Retaining Ring	088

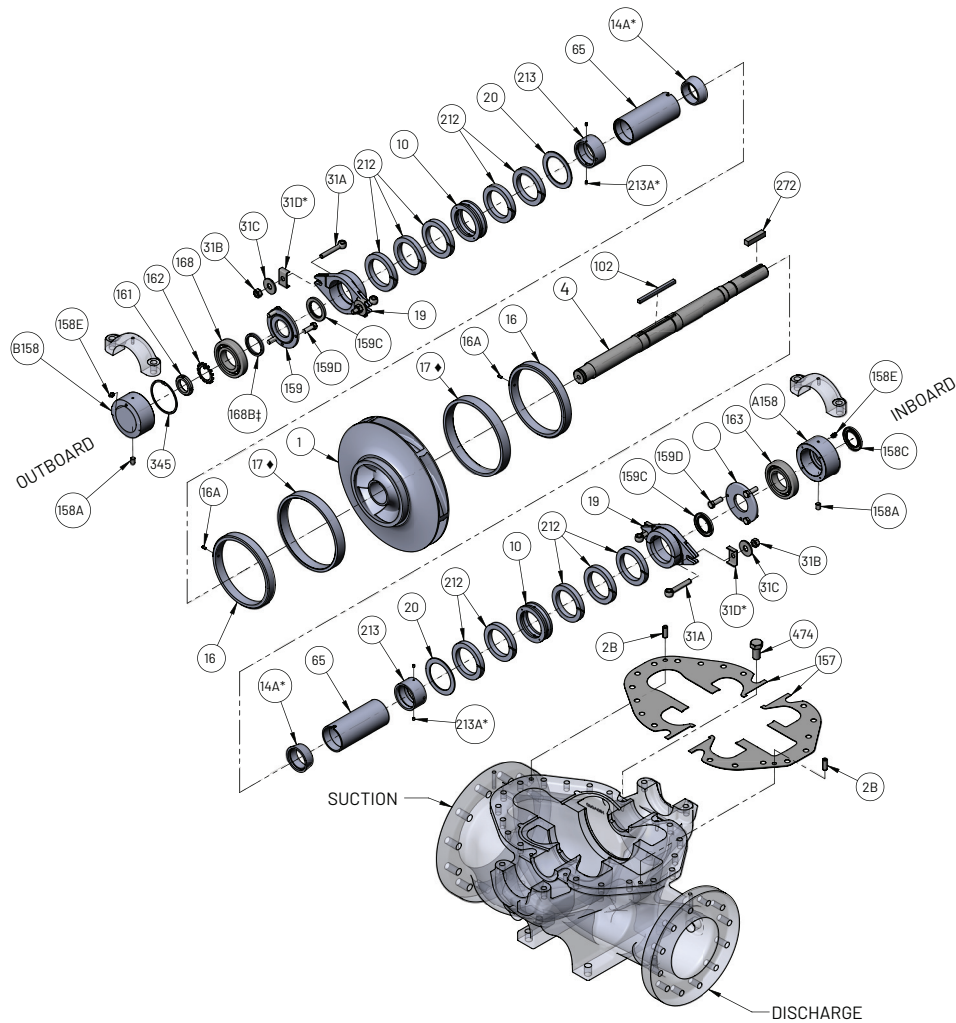
### NOTES

\*PART NO. 14A, #31D & #213A ARE USED FOR PUMP MODEL 10-5824F ONLY.

‡PART NO. 168B IS USED FOR PUMP MODEL 4-5824F ONLY.



# 5800F SERIES WITH INTEGRAL BEARING ARMS - ROTATING ASSEMBLY WITH PACKING



## PARTS INCLUDED IN ROTATING ASSEMBLY WITH PACKING

NOTE: ROTATING ASSEMBLY ARRIVES PRE-ASSEMBLED FOR EASE OF INSTALLATION.

PART NO.	PART DESCRIPTION	MATERIAL CODES	PART NO.	PART DESCRIPTION	MATERIAL CODES
		644			644
1	Impeller	225	A158	Radial Bearing Cartridge	010
2A	Cap Screw	082	B158	Thrust Bearing Cartridge	010
2B	Pin, Casing Alignment	087	158A	Pin, Bearing Housing	087
4	Shaft	072	158C	Lip Seal	653
10	Lantern Ring	509	158E	Grease Fitting	651
14	Shaft Sleeve	212	159	Bearing Housing Cover	010
14A*	Shaft Sleeve Spacer	212	159C	Lip Seal	653
16	Case Wear Ring	208	159D	Cap Screw	082
16A	Pin, Case Wear Ring	087	161	Lock Nut	080
17**	Impeller Wear Ring	208	162	Lock Washer	080
19	Packing Gland	104	163	Radial Bearing	647
20	Stuffing Box Washer	208	168	Thrust Bearing	647
31A	Gland Stud	104	168B‡	Bearing Spacer	063
31B	Gland Nut	104	212	Packing Ring	802
31C	Gland Washer	104	213	Sleeve Nut	208
31D*	Gland Clip	104	213A*	Set Screw	113
102	Impeller Key	087	272	Coupling Key	087
157	Casing Gasket	463	345	Retaining Ring	088

### NOTES

\*PART NOS. 14A, 31D & 213A ARE USED FOR PUMP MODEL 10-5824F ONLY.

‡PART NO. 168B IS USED FOR PUMP MODEL 4-5824F ONLY.

\*\*PART NO. 17 IS USED FOR PUMP MODEL 3-5876AF ONLY.

## 2800F & 5800F SERIES KIT SELECTION TABLE

PUMP SIZE	PACKING KIT	OVERHAUL KIT	ROTATING ASSEMBLY
3-2874AF	476-0946-644	476-0974-644	700-0708-644
3-2874CF	476-0946-644	476-0974-644	700-0709-644
4-2873AF	476-0947-644	476-0975-644	700-0710-644
4-2876AF	476-0948-644	476-0976-644	700-0711-644
4-2876CF	476-0948-644	476-0976-644	700-0712-644
4-2823CF	476-0949-644	476-0977-644	700-0713-644
5-2823AF	476-0950-644	476-0978-644	700-0714-644
5-2824AF	476-0951-644	476-0979-644	700-0715-644
6-2876AF	476-0952-644	476-0980-644	700-0716-644
6-2876BF	476-0952-644	476-0980-644	700-0951-644
6-2823AF	476-0953-644	476-0981-644	700-0717-644
6-2823CF	476-0953-644	476-0981-644	700-0718-644
6-2824CF	476-0954-644	476-0982-644	700-0719-644
6-2825AF	476-0955-644	476-0983-644	700-0720-644
8-2823AF	476-0956-644	476-0984-644	700-0721-644
8-2824AF	476-0957-644	476-0985-644	700-0722-644
10-2825AF	476-0958-644	476-0986-644	700-0723-644
3-5876AF	476-0920-644	476-0921-644	700-0707-644
4-5824F	476-0960-644	476-0988-644	700-0725-644
5-5876F	476-0961-644	476-0989-644	700-0726-644
6-5876F	476-0963-644	476-0991-644	700-0729-644
6-5824F	476-0965-644	476-0993-644	700-0731-644
10-5824F	476-0969-644	476-0997-644	700-0736-644

**NOTES PAGE**

---



---



---



---



---



---



---



---



---



---



---



---



---



---



---



---



---



---



---



---



---



---

## STANDARD LIMITED WARRANTY

---

Seller warrants equipment (and its component parts) of its own manufacture against defects in materials and workmanship under normal use and service for one (1) year from the date of installation or start-up, or for eighteen (18) months after the date of shipment, whichever occurs first. Seller does not warrant accessories or components that are not manufactured by Seller; however, to the extent possible, Seller agrees to assign to Buyer its rights under the original manufacturer's warranty, without recourse to Seller. Buyer must give Seller notice in writing of any alleged defect covered by this warranty (together with all identifying details, including the serial number, the type of equipment, and the date of purchase) within thirty (30) days of the discovery of such defect during the warranty period. No claim made more than 30 days after the expiration of the warranty period shall be valid. Guarantees of performance and warranties are based on the use of original equipment manufactured (OEM) replacement parts. Seller assumes no responsibility or liability if alterations, non-authorized design modifications and/or non-OEM replacement parts are incorporated. If requested by Seller, any equipment (or its component parts) must be promptly returned to Seller prior to any attempted repair, or sent to an authorized service station designated by Seller, and Buyer shall prepay all shipping expenses. Seller shall not be liable for any loss or damage to goods in transit, nor will any warranty claim be valid unless the returned goods are received intact and undamaged as a result of shipment. Repaired or replaced material returned to customer will be shipped F.O.B., Seller's factory. Seller will not give Buyer credit for parts or equipment returned to Seller, and will not accept delivery of any such parts or equipment, unless Buyer has obtained Seller's approval in writing. The warranty extends to repaired or replaced parts of Seller's manufacture for ninety (90) days or for the remainder of the original warranty period applicable to the equipment or parts being repaired or replaced, whichever is greater. This warranty applies to the repaired or replaced part and is not extended to the product or any other component of the product being repaired. Repair parts of its own manufacture sold after the original warranty period are warranted for a period of one (1) year from shipment against defects in materials and workmanship under normal use and service. This warranty applies to the replacement part only and is not extended to the product or any other component of the product being repaired. Seller may substitute new equipment or improve part(s) of any equipment judged defective without further liability. All repairs or services performed by Seller, which are not covered by this warranty, will be charged in accordance with Seller's standard prices then in effect.

THIS WARRANTY IS THE SOLE WARRANTY OF SELLER AND SELLER HEREBY EXPRESSLY DISCLAIMS AND BUYER WAIVES ALL OTHER WARRANTIES EXPRESSED, IMPLIED IN LAW OR IMPLIED IN FACT, INCLUDING ANY WARRANTIES OF MERCHANTABILITY OR FITNESS FOR A PARTICULAR PURPOSE. Seller's sole obligation under this warranty shall be, at its option, to repair or replace any equipment (or its component parts) which has a defect covered by this warranty, or to refund the purchase price of such equipment or part. Under the terms of this warranty, Seller shall not be liable for (a) consequential, collateral, special or liquidated losses or damages; (b) equipment conditions caused by normal wear and tear, abnormal conditions of use, accident, neglect, or misuse of said equipment; (c) the expense of, and loss or damage caused by, repairs or alterations made by anyone other than the Seller; (d) damage caused by abrasive materials, chemicals, scale deposits, corrosion, lightning, improper voltage, mishandling, or other similar conditions; (e) any loss, damage, or expense relating to or resulting from installation, removal or reinstallation of equipment; (f) any labor costs or charges incurred in repairing or replacing defective equipment or parts, including the cost of reinstalling parts that are repaired or replaced by Seller; (g) any expense of shipment of equipment or repaired or replacement parts; or (h) any other loss, damage or expense of any nature.

The above warranty shall not apply to any equipment which may be separately covered by any alternate or special warranties.

**PERFORMANCE:** In the absence of Certified Pump Performance Tests, equipment performance is not warranted or guaranteed. Performance curves and other information submitted to Buyer are approximate and no warranty or guarantee shall be deemed to arise as a result of such submittal. All testing shall be done in accordance with Seller's standard policy under Hydraulic Institute procedures.

**LIABILITY LIMITATIONS:** Under no circumstances shall the Seller have any liability under the Order or otherwise for liquidated damages or for collateral, consequential or special damages or for loss of profits, or for actual losses or for loss of production or progress of construction, regardless of the cause of such damages or losses. In any event, Seller's aggregate total liability under the Order or otherwise shall not exceed the contract price.

**ACTS OF GOD:** Seller shall in no event be liable for delays in delivery of the equipment or other failures to perform caused by fires, acts of God, strikes, labor difficulties, acts of governmental or military authorities, delays in transportation or procuring materials, or causes of any kind beyond Seller's control.

**COMPLIANCE WITH LAW:** Seller agrees to comply with all United States laws and regulations applicable to the manufacturing of the subject equipment. Such compliance shall include: The Fair Labor Standards Acts of 1938, as amended; Equal Employment Opportunity clauses of Executive Order 11246, as amended; Occupational Safety and Health Act of 1970 and the standards promulgated thereunder, if applicable. Since compliance with the various Federal, State, and Local laws and regulations concerning occupational health and safety, pollution or local codes are affected by the use, installation and operation of the equipment and other matters over which Seller has no control, Seller assumes no responsibility for compliance with those laws and regulations, whether by way of indemnity, warranty, or otherwise. It is incumbent upon the Buyer to specify equipment which complies with local codes and ordinances.



3601 Fairbanks Avenue | Kansas City, KS 66106 | Ph: 913.371.5500 | [pentair.com/fairbanks-nijhuis](http://pentair.com/fairbanks-nijhuis)

All indicated Pentair trademarks and logos are property of Pentair. Third party registered and unregistered trademarks and logos are the property of their respective owners.

©2025 Pentair. All Rights Reserved.