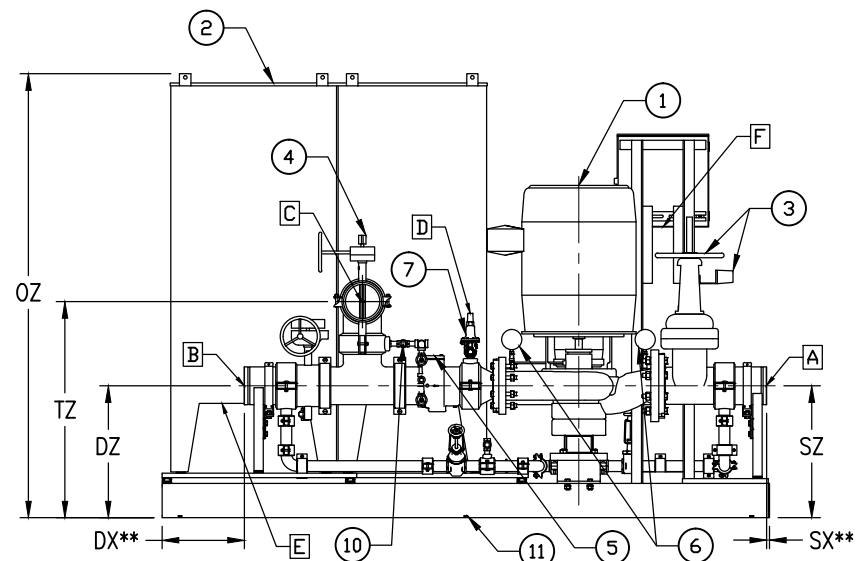
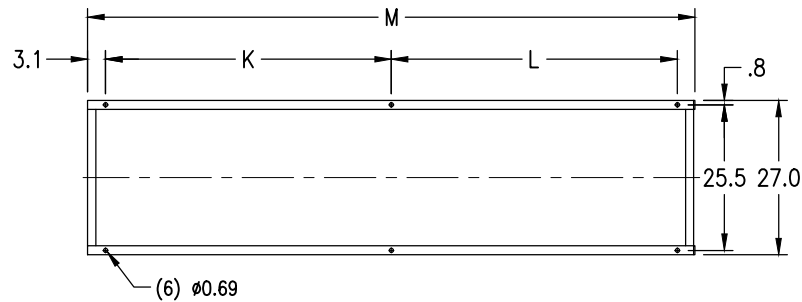


TOP VIEW



BACK VIEW



ANCHOR BOLT DETAILS

DIMENSION TABLE													
FLOW	PUMP	SX**	SY	SZ	DX**	DY	DZ	TX	TY	TZ	OX	OY	OZ
750	4"1593F	(1.5)	19.9	23.8	12.4	19.9	23.8	74.7	32.4	38.5	107.7	35.0	78.4
750	4"1594BF	0.5	19.9	23.1	14.4	19.9	23.1	70.7	32.4	37.8	106.3	35.0	78.4
450-500	4"1594BF/4"1594F	0.5	19.9	23.1	14.4	19.9	23.1	70.7	29.6	36.3	106.3	32.9	78.4
450-500	4"1593CF/4"1593BF/4"1592F	(2.0)	19.9	20.5	17.4	19.9	21.0	70.3	29.6	34.2	108.3	32.9	78.4
450-500	4"1591CF/4"1591BF	(2.0)	19.9	20.2	17.4	19.9	21.3	70.3	29.6	34.5	108.3	32.9	78.4
400	4"1593BF/4"1592F	1.6	19.9	21.5	15.4	19.9	21.0	63.9	29.6	32.7	98.8	34.7	67.1
400	4"1591CF/4"1591BF	6.6	19.9	21.3	15.4	19.9	21.3	58.9	29.6	33.0	98.8	34.7	67.1
400	4"1594F	(1.9)	19.9	24.1	12.4	19.9	23.1	70.4	29.6	34.8	100.7	34.7	67.1
300	4"1593BF/4"1592F	1.6	19.9	21.5	15.4	19.9	21.0	63.9	28.1	31.6	98.8	33.6	67.1
300	4"1591BF	6.6	19.9	21.3	15.4	19.9	21.3	58.9	28.1	31.9	98.8	33.6	67.1
300	3"1593BF	6.6	19.9	20.9	15.4	19.9	20.9	58.9	28.1	31.5	98.8	33.6	67.1
300	3"1591CF	6.6	19.9	20.8	15.4	19.9	20.8	58.9	28.1	31.4	98.8	33.6	67.1
250	4"1592F	1.6	19.9	21.5	19.5	19.9	21.0	61.6	28.1	30.9	98.8	33.5	67.1
250	3"1593BF	6.6	19.9	20.9	19.6	19.9	20.9	56.5	28.1	30.8	98.8	33.5	67.1
250	3"1593F	6.6	19.9	19.9	19.6	19.9	19.9	56.5	28.1	29.8	98.8	33.5	67.1
250	3"1591CF	6.6	19.9	20.8	19.6	19.9	20.8	56.5	28.1	30.6	98.8	33.5	67.1
250	3"1591BF	4.1	19.9	19.8	21.1	19.9	20.3	57.5	28.1	30.1	98.8	33.5	67.1
200	3"1593BF	2.5	19.9	19.9	9.6	19.9	19.4	59.2	27.6	28.8	87.3	32.9	67.1
200	3"1592AF	6.6	19.9	18.8	9.6	19.9	18.8	55.1	27.6	28.1	87.3	32.9	67.1
200	3"1593F	2.5	19.9	18.9	9.6	19.9	18.4	59.2	27.6	27.8	87.3	32.9	67.1
200	3"1591CF	2.5	19.9	19.8	9.6	19.9	19.3	59.2	27.6	28.6	87.3	32.9	67.1
200	3"1591AF	8.1	19.9	18.8	11.1	19.9	18.8	52.1	27.6	28.1	87.3	32.9	67.1
150	3"1593BF	3.0	19.9	20.2	9.0	19.9	19.4	59.8	27.6	28.3	87.3	34.2	67.1
150	3"1592AF	2.0	19.9	19.1	9.0	19.9	18.8	60.8	27.6	27.6	87.3	34.2	67.1
150	3"1591CF	3.0	19.9	20.1	9.0	19.9	19.3	59.8	27.6	28.1	87.3	34.2	67.1
150	3"1591AF	3.5	19.9	19.1	10.5	19.9	18.8	57.8	27.6	27.6	87.3	34.2	67.1
100	3"1593BF	(1.3)	19.9	20.4	6.6	19.9	19.4	61.7	27.6	32.8	88.5	32.8	67.1
100	3"1592AF	(0.8)	19.9	19.3	6.6	19.9	18.8	61.2	27.6	32.2	88.0	32.8	67.1
100	3"1591AF	0.8	19.9	19.3	8.1	19.9	18.8	58.2	27.6	32.2	87.3	32.8	67.1
100	2"1591CF	4.4	19.9	17.8	10.2	19.9	17.8	52.5	27.6	31.2	87.3	32.8	67.1
50	3"1593BF	(1.3)	19.9	20.4	6.6	19.9	19.4	61.7	27.5	26.7	88.5	31.1	67.1
50	3"1592AF	(0.8)	19.9	19.3	6.6	19.9	18.8	61.2	27.5	26.1	88.0	31.1	67.1
50	2"1591CF	4.4	19.9	17.8	10.2	19.9	17.8	52.5	27.5	25.1	87.3	31.1	67.1

CUSTOMER CONNECTION SIZES			
FLOW	A	B	C
750	6"	6"	6"
500	6"	6"	4"
450	6"	6"	4"
400	4"	4"	4"
300	4"	4"	3"
250	4"	3"	3"
200	3"	3"	2.5"
150	2.5"	2.5"	2.5"
100	2"	2"	2.5"
50	2"	2"	2"

ANCHOR BOLTS			
FLOW	K	L	M
50-200	40.5	40.5	87.3
250-400	46.3	46.3	98.8
450-750	50	50	106.3

MAXIMUM CONTROLLER DIMENSION		
FLOW	DEPTH	WIDTH
50-200	16	45
250-400	16	53
450-750	16	60

CUSTOMER CONNECTION LIST	
LEGEND	DESCRIPTION
A	SUCTION, GROOVED
B	DISCHARGE, GROOVED
C	HOSE HEADER, GROOVED
D	CASING RELIEF VALVE, 3/4" FNPT
E	FIRE PUMP CONTROLLER INCOMING ELECTRICAL
F	JOCKEY PUMP CONTROLLER INCOMING ELECTRICAL

- NOTES:
- DIMENSIONS ARE IN INCHES AND MAY VARY $\pm 1/2"$.
 - OVERALL DIMENSIONS MAY VARY DEPENDING ON THE CONTROLLER SELECTION BY CUSTOMER.
 - ** DIMENSION TABLE VALUES IN PARENTHESES () DENOTE THE PIPE PROJECTION OVERHANGS SKID.
 - STRUCTURAL STEEL BASE TO BE GROUTED ON SITE BY OTHERS.
 - TAMPER SWITCHES TO BE WIRED TO CUSTOMER ALARM BY OTHERS.
 - ALL PIPES ARE OF SCHEDULE 40 STEEL PAINTED RED PER AURORA OR FBN STD 668.
 - ALL PUMP AND PIPING DRAINS TO BE PIPED TO CUSTOMER SUPPLIED DRAIN LOCATION BY OTHERS.
 - REFER TO SPECIFIC CONTROLLER MANUFACTURERS LATEST DIMENSIONAL DRAWINGS FOR ALTERNATE STARTING METHODS AND TRANSFER SWITCH.
 - FOR MAXIMUM CONTROLLER SIZE REFER "MAXIMUM CONTROLLER DIMENSION" TABLE.
 - ALL PIPE AND FITTING CONNECTIONS ARE GROOVED.

PART LIST	
LEGEND	DESCRIPTION
1	IN-LINE FIRE PUMP
2	FIRE PUMP CONTROLLER
3	OS&Y GROOVED GATE VALVE WITH TAMPER SWITCH
4	BUTTERFLY ISOLATION VALVE WITH TAMPER SWITCH
5	GROOVED CHECK VALVE
6	SUCTION AND DISCHARGE GAUGES
7	CASING RELIEF VALVE
8	JOCKEY CONTROLLER
9	PVM MULTISTAGE JOCKEY PUMP
10	1/2" PRESSURE SENSING LINE
11	SYSTEM MOUNTING STRUCTURAL BASE
12	JOCKEY RELIEF VALVE (OPTIONAL; NOT SHOWN)

				MATERIAL:			
				COMPANY CONFIDENTIAL: Information contained herein is confidential. It is the property of PENTAIR. It is to be used solely for the purpose provided, and it is not to be disclosed to others without the prior written consent of PENTAIR.			
A	ALL	07/28/16	INITIAL RELEASE	SK	VN		
REV	ZONE	DATE	REVISION DESCRIPTION	BY	CHK'D		
				DO NOT SCALE DRAWING			
				PLOT SCALE 1:16			
				DRAWN BY SK		DATE 07/28/16	
				CHECKED BY VN		APPROVED BY MH	
				PATTERN NUMBER		REV	
				SIZE D		295 0033 000 A	