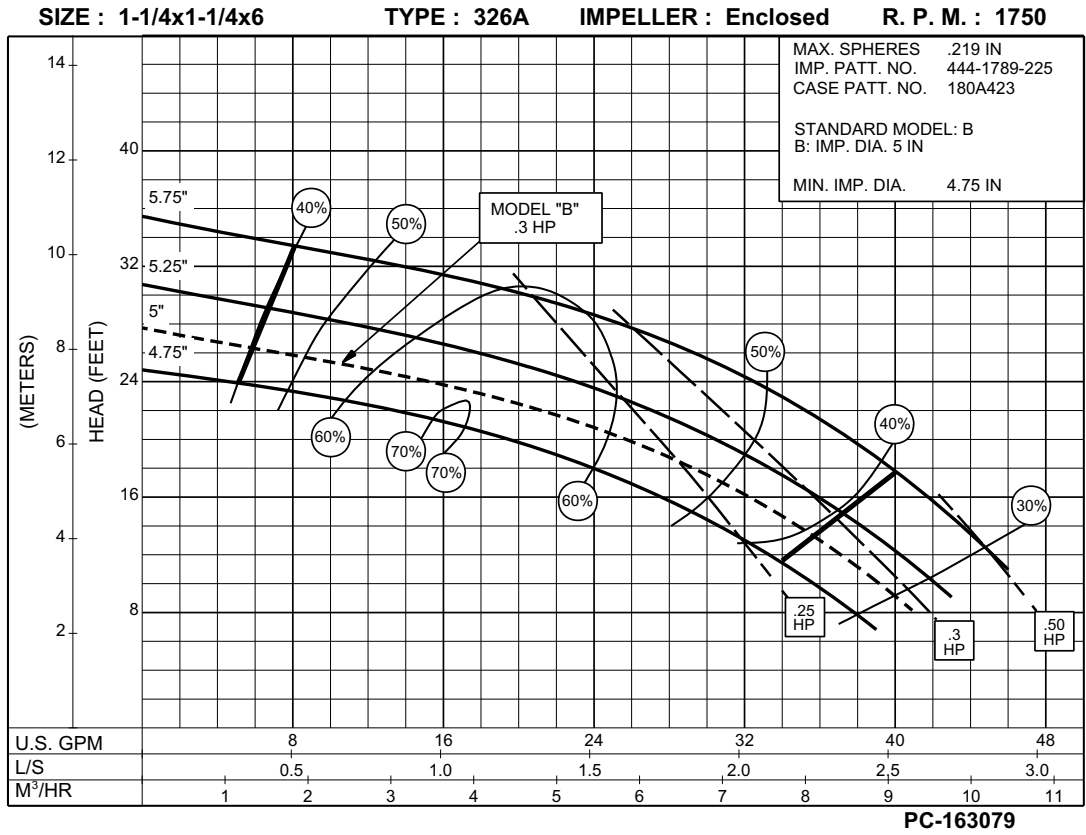


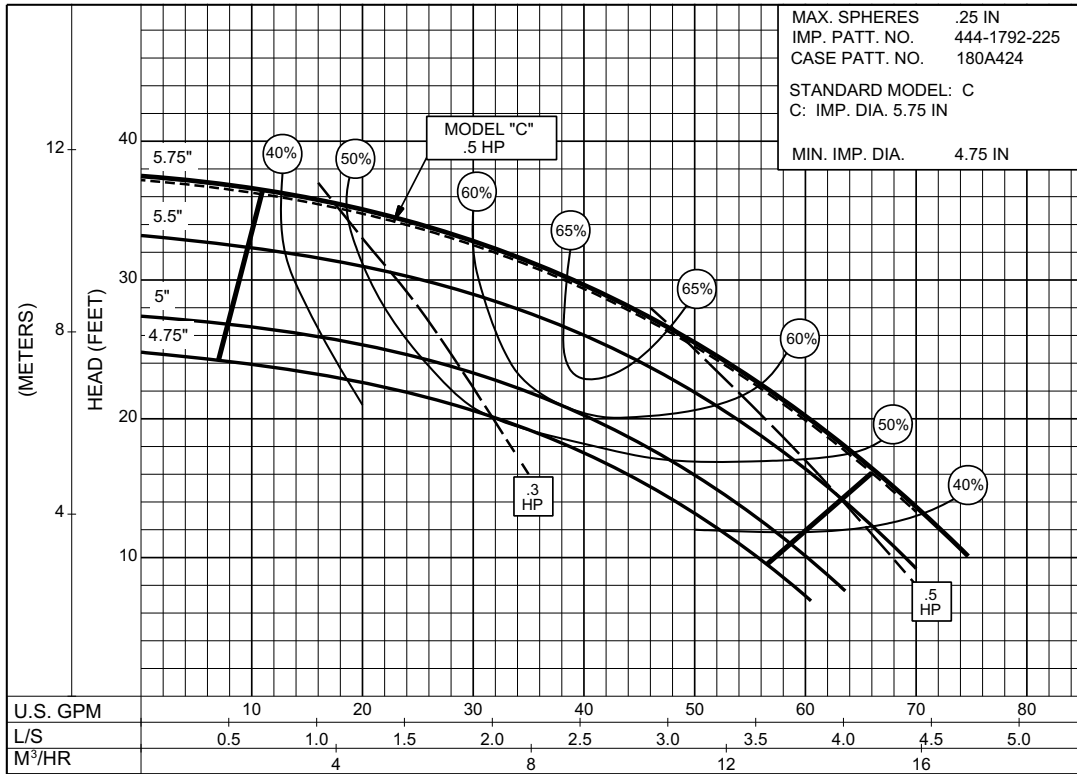
1-1/4 X 1-1/4 X 6 SERIES 326A

ENCLOSED IMPELLER



1750
R.P.M

SIZE : 1-1/2x1-1/2x6 TYPE : 326A IMPELLER : Enclosed R. P. M. : 1750



MAX. SPHERES .25 IN
 IMP. PATT. NO. 444-1792-225
 CASE PATT. NO. 180A424
 STANDARD MODEL: C
 C: IMP. DIA. 5.75 IN
 MIN. IMP. DIA. 4.75 IN

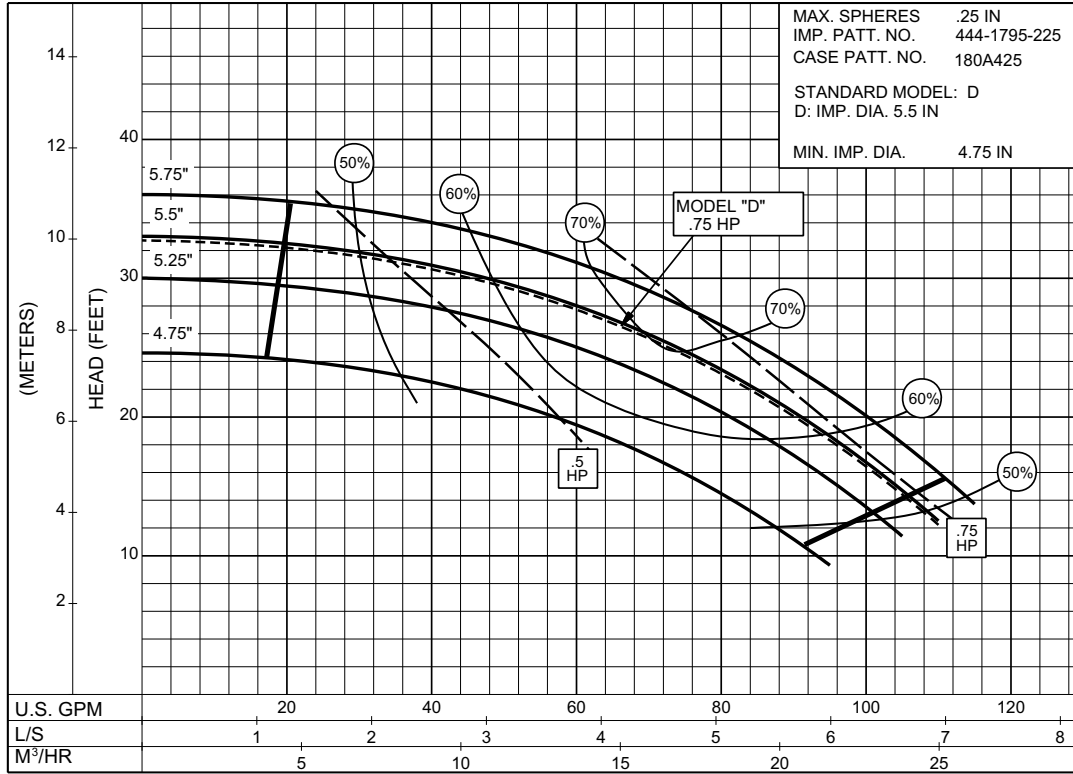
1750
R.P.M

PC-163080

2 X 2 X 6 SERIES 326A

ENCLOSED IMPELLER

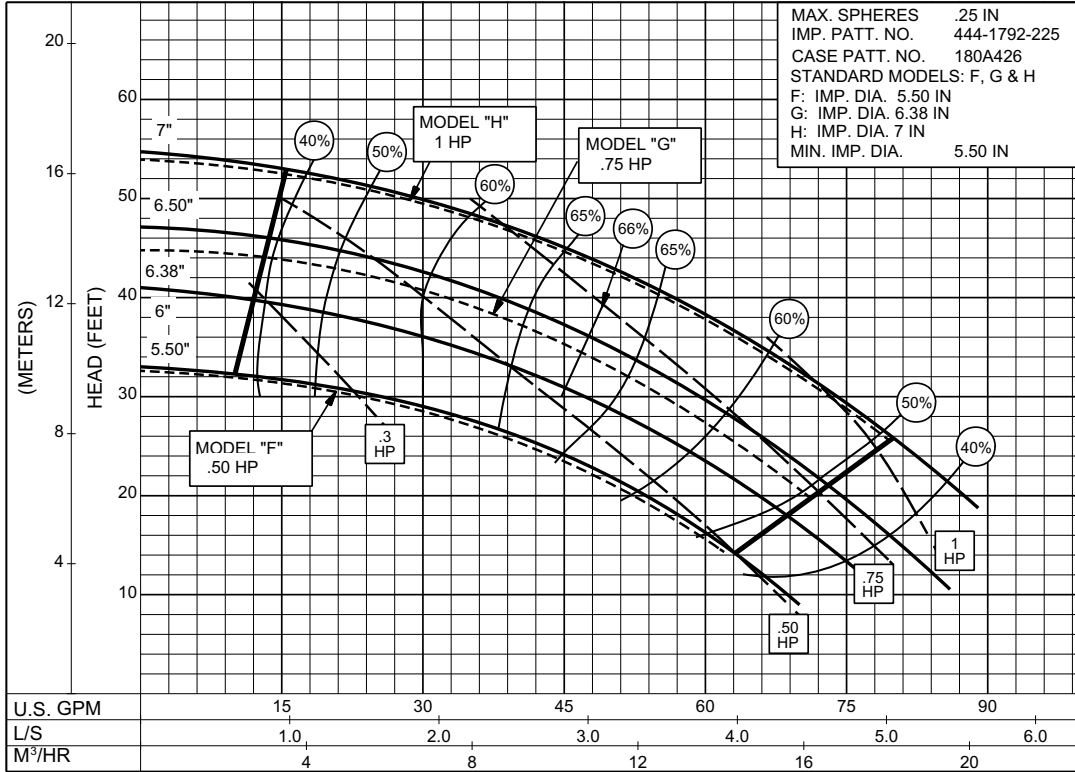
SIZE : 2x2x6 TYPE : 326A IMPELLER : Enclosed R. P. M. : 1750



PC-163081



SIZE : 1-1/2X1-1/2X7 TYPE : 326A IMPELLER : Enclosed R. P. M. : 1750



1750
R.P.M

PC-163082A

2 X 2 X 7 SERIES 326A

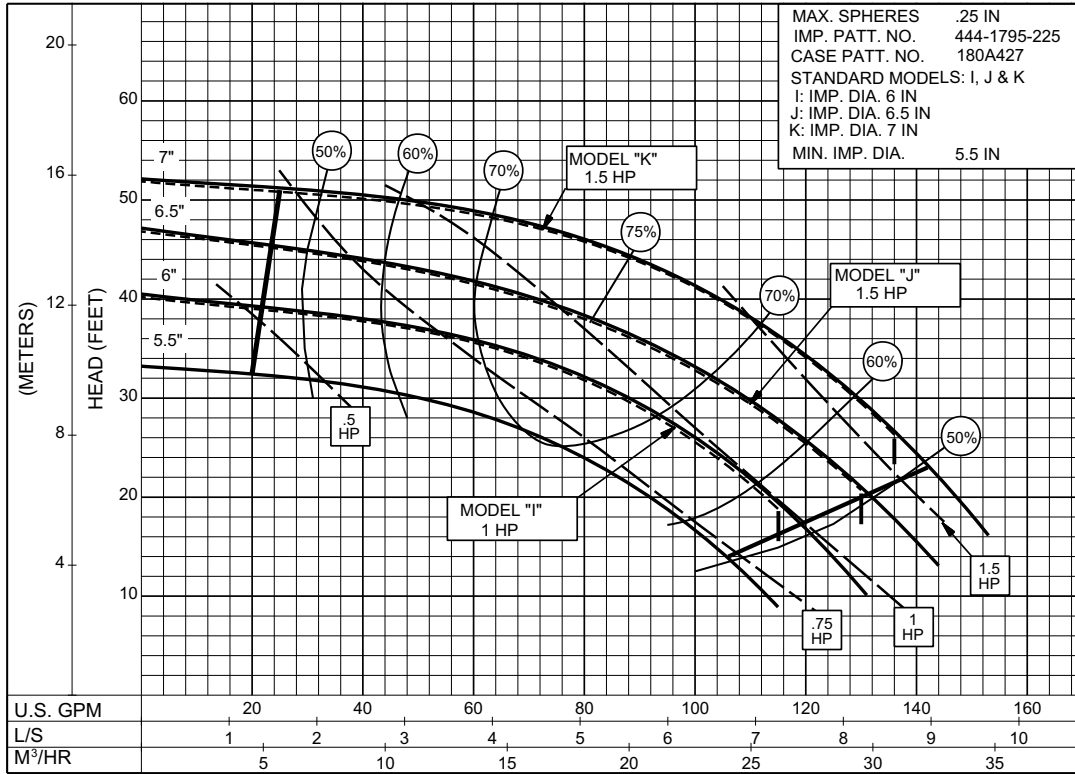
ENCLOSED IMPELLER

SIZE : 2X2X7

TYPE : 326A

IMPELLER : Enclosed

R. P. M. : 1750



1750
R.P.M

PC-163083