



EXPANSION TANKS

1060 SERIES



AURORA 1060 SERIES EXPANSION TANKS

Manufactured in accordance with ASME Section VIII for unfired pressure vessels, the precharged diaphragm and bladder type tanks separate the air and water within the tank, providing the following benefits.

- ◆ Tanks can be sized up to 80% smaller than a conventional tank
- ◆ Improved system performance
- ◆ Reduced system corrosion
- ◆ Reduced requirement for chemical treatment
- ◆ Eliminates water-logged expansion tanks
- ◆ Stabilizes system pressure
- ◆ Dampens pressure transients (water hammer)
- ◆ Prevents air ingress

IMPORTANCE OF AIR PRECHARGE

When a tank is precharged to the minimum system operating pressure (P_{MIN}), it accepts only the expanded system water as the temperature increases. The highest temperature condition will have compressed the precharge to the maximum system operating pressure (P_{MAX}). As the temperature decreases, the expanded water is pushed back into the system by the tank

pressure. This design allows for a smaller tank, since space for charge water to compress air at atmospheric pressure to P_{MIN} is no longer necessary, as it is when using a conventional expansion tank.

DETERMINING TOTAL SYSTEM VOLUME

Add the total pipe water volume in gallons (from tables) to the total water volume of all system components in gallons: boilers, heat exchangers, etc.



PIPE VOLUME IN GALLONS PER FOOT

PIPE DIAMETER	1/2"	3/4"	1"	1-1/4"	1-1/2"	2"	2-1/2"
Steel Pipe (Sch. 40)	0.0158	0.0277	0.0449	0.0779	0.1060	0.1740	0.2488
Copper Tube 18	N/A	0.0173	N/A	N/A	N/A	N/A	N/A
Copper Tube 20	N/A	0.0201	N/A	N/A	N/A	N/A	N/A

PIPE DIAMETER	3"	4"	5"	6"	8"	10"	12"
Steel Pipe (Sch. 40)	0.384	0.66	1.04	1.51	2.61	4.11	5.82
Copper Tube	0.354	0.622	0.971	1.39	2.43	3.78	5.46

WATER CONTENT IN HEAT EXCHANGERS

SHELL DIAMETER	GALLONS PER FOOT FOR SHELL LENGTH	
	IN SHELL	IN TUBES
4"	0.425	0.225
6"	1.00	0.50
8"	1.85	1.00
10"	2.40	1.20
12"	4.00	2.20
14"	5.00	2.50
16"	6.50	3.50
18"	8.00	4.50
20"	10.0	5.50
24"	15.0	7.50

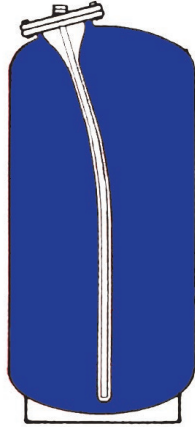
PUMP FEATURES

UNDERSTANDING HOW A BLADDER STYLE EXPANSION TANK FUNCTIONS

CONDITION 1: SYSTEM PRESSURE AT 12 PSI (83 KPA) COLD WATER, P_{MIN}

System filled to minimum operating pressure, P_{MIN} . In this example, 12 psi also equals the precharge condition of tank as shipped from factory. Always check air pressure with tire gauge. If low, add air.

Minimum system operating pressure (P_{MIN}). Bladder is empty.

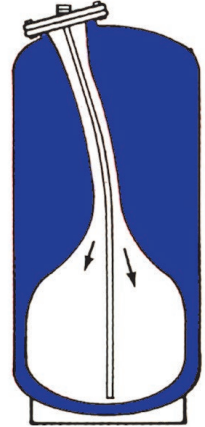


CONDITION 2: SYSTEM PRESSURE AT 20 PSI (138 KPA) HEATED WATER

System water heated to about half of maximum system temperature.

Expanded water enters bladder and compresses the air.

Air pressure in tank now equals system pressure, or 20 psi.

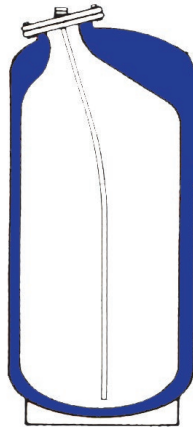


CONDITION 3: SYSTEM PRESSURE AT 25 PSI (172 KPA) AT MAX. TEMPERATURE

System water heated to maximum system temperature.

Expanded water fills bladder and further compresses the air.

Air pressure in tank now equals maximum system pressure of 25 psi (P_{MAX}).

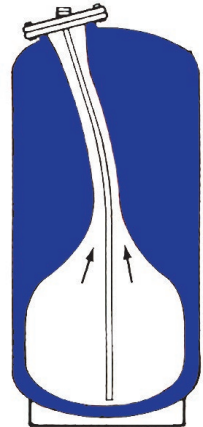


CONDITION 4: SYSTEM PRESSURE AT 20 PSI (138 KPA) HEATED WATER

System water cools down to about half of maximum temperature.

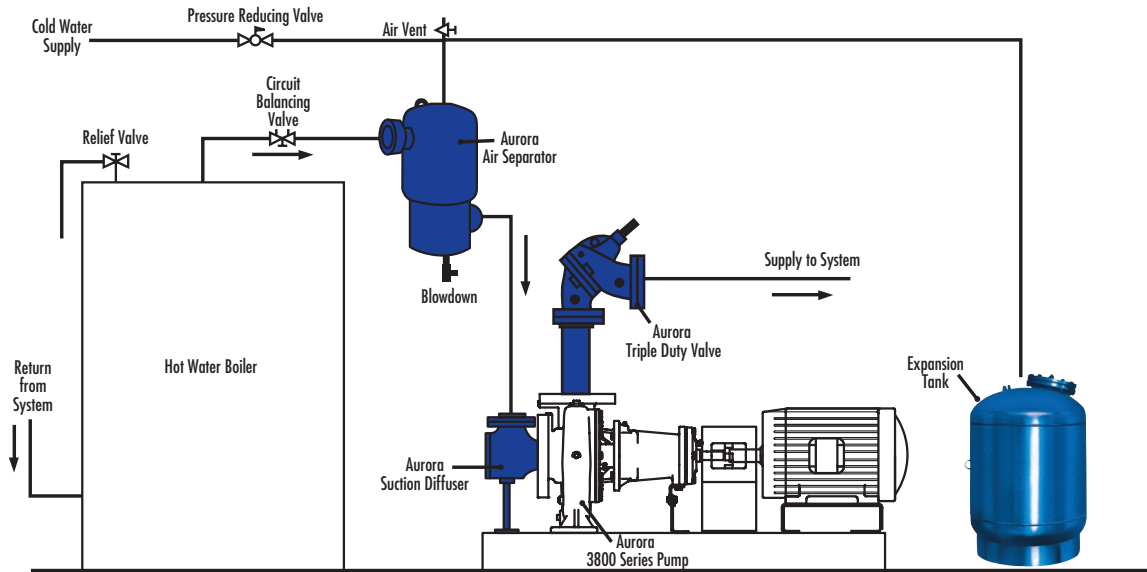
Expanded water in bladder now is drawn back into systems.

Air pressure in tank now equals system pressure of 20 psi.

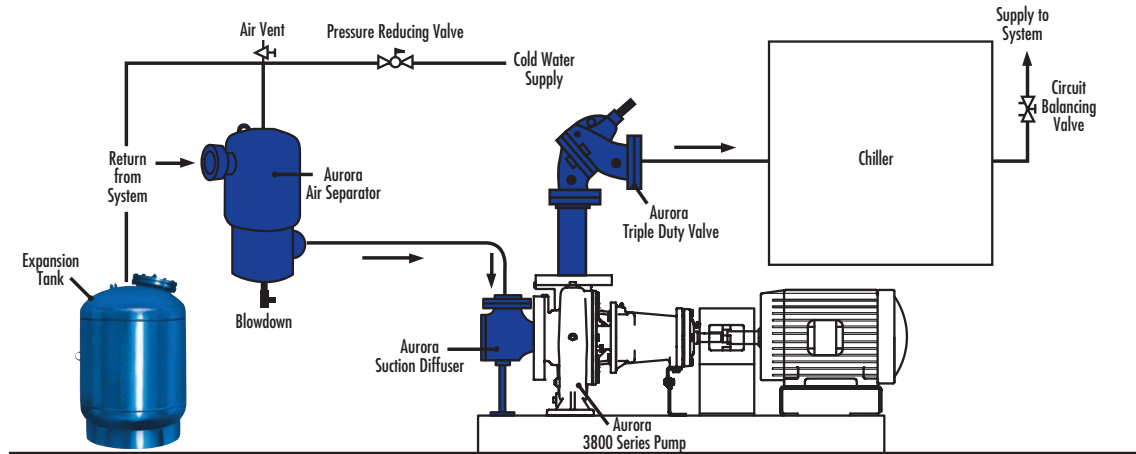


DIMENSION DETAILS

FOR BOILER APPLICATIONS



FOR CHILLER APPLICATIONS



800 Airport Road
North Aurora, IL 60542

3601 Fairbanks Ave.
Kansas City, KS 66106

pentair.com/aurora



WEMA

All indicated Pentair trademarks and logos are property of Pentair. Third party registered and unregistered trademarks and logos are the property of their respective owners.

©2024 Pentair. All Rights Reserved.

A-02-1056 (05-14-24)