

4

3

2

1

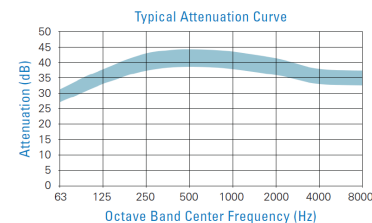
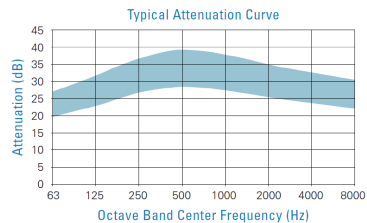
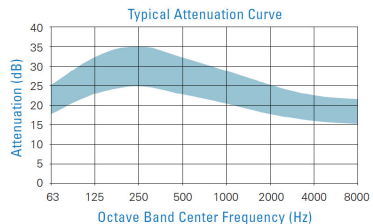
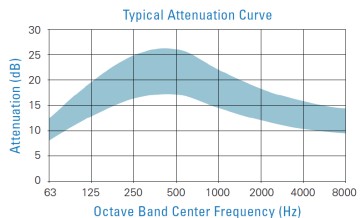
END INLET, END OUTLET CONFIGURATION

3" NPT CONNECTIONS

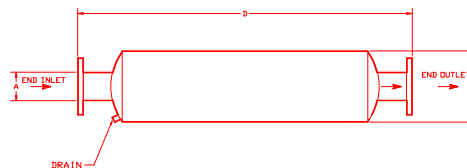
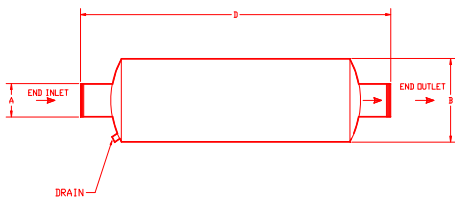
| INDUSTRIAL | | | | | RESIDENTIAL | | | | | CRITICAL | | | | | HOSPITAL | | | | | | |
|------------|---|---|----|-----|-------------|---|---------------|---|-----|----------|--------|---|---------------|-----|----------|---|--------|---|---------------|--|--|
| P/N | A | B | D | WGT | P/N | A | B | D | WGT | P/N | A | B | D | WGT | P/N | A | B | D | WGT | | |
| C062096 | 3 | 8 | 25 | 20 | C06530 | 3 | NOT AVAILABLE | | | | C06516 | 3 | NOT AVAILABLE | | | | C06718 | 3 | NOT AVAILABLE | | |

4" - 10" 150# ANSI FLANGE

| INDUSTRIAL | | | | | RESIDENTIAL | | | | | CRITICAL | | | | | HOSPITAL | | | | |
|------------|----|----|------|-----|-------------|----|----|------|-----|----------|----|----|-------|-----|----------|----|----|-------|-----|
| P/N | A | B | D | WGT | P/N | A | B | D | WGT | P/N | A | B | D | WGT | P/N | A | B | D | WGT |
| C062079 | 4 | 8 | 32.5 | 50 | C06532 | 4 | 10 | 44.0 | 61 | C06518 | 4 | 10 | 56.0 | 83 | C06720 | 4 | 14 | 60.0 | 111 |
| C062080 | 5 | 10 | 44.0 | 74 | C06533 | 5 | 12 | 56.0 | 91 | C06519 | 5 | 12 | 68.0 | 117 | C06721 | 5 | 18 | 68.0 | 176 |
| C062081 | 6 | 12 | 44.0 | 82 | C06534 | 6 | 12 | 56.0 | 98 | C06520 | 6 | 12 | 68.0 | 131 | C06722 | 6 | 18 | 68.0 | 184 |
| C062082 | 8 | 20 | 62.5 | 156 | C06535 | 8 | 18 | 68.0 | 177 | C06521 | 8 | 18 | 92.0 | 235 | C06723 | 8 | 26 | 96.0 | 394 |
| C06548 | 10 | 22 | 72.0 | 238 | C06536 | 10 | 22 | 84.0 | 284 | C06522 | 10 | 22 | 108.0 | 342 | C06724 | 10 | 30 | 110.0 | 696 |



DIMENSIONS ARE IN INCHES



NOTES:

- DUAL SHELL DESIGN TO ELIMINATE SHELL RADIATED NOISE AND INCREASE DURABILITY.
- CARBON STEEL CONSTRUCTION.
- COATED WITH SATIN BLACK PAINT RATED TO 1200°F
- CONNECTIONS:
 - MALE NPT ON 3.0" ONLY
 - 125/150# ANSI FLANGES
- EQUIPPED WITH PORT PLUGGED DRAIN.
- ALL WELDED CONSTRUCTION.

| REV | DESCRIPTION | ECN# | DWN | APVD | DATE |
|-----|--|------|-----|------|---------|
| L | UPDATED INFORMATION FOR INDUSTRIAL SILENCERS | 5839 | JCA | JCA | 16SEP22 |
| M | UPDATED SILENCER DIM & WEIGHT FOR SILENCER C06734 - PAGE 2 | 6741 | JCA | JCA | 16MAR23 |
| - | UPDATED CALLOUT FOR 4-10" WAS NPT IN ERROR - PAGE 1 | N/A | JCA | JCA | 05APR23 |
| N | UPDATES TO PAGE 1 TABLE | 5839 | JCA | JCA | 19APR23 |

| | | | |
|---|--|---|--|
| <small>THIS DRAWING AND THE INFORMATION HEREON ARE OUR PROPERTY AND MAY BE USED BY OTHERS ONLY AS AUTHORIZED BY US. UNPUBLISHED - ALL RIGHTS RESERVED UNDER THE COPYRIGHT LAWS.</small> | | <input type="checkbox"/> ISSUED <input checked="" type="checkbox"/> CONTROLLED DRAWING | <h1>CLARKE</h1> <i>Fire Protection Products, Inc.</i> |
| DRAWN: DMPOTTER DATE: 7/22/1992 ENGR: DMPOTTER | NAME: SILENCER, EXHAUST (END INLET, END OUTLET) & (SIDE INLET, END OUTLET) | | |
| MATERIAL: SEE NOTES ASSEMBLY: SILENCERS SIMILAR TO: N/A | PART NO: D451 SCALE: NTS UNITS: MM [INCH] | REV: N PAGE: 1 OF 2 | |

4

3

2

1

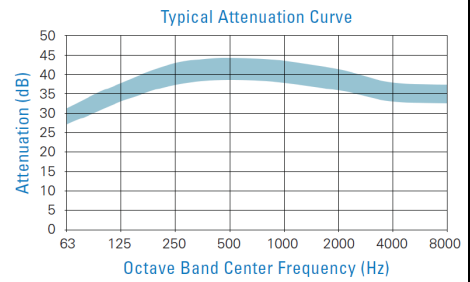
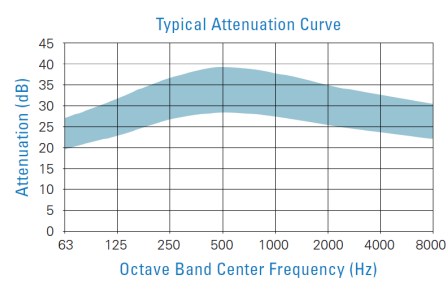
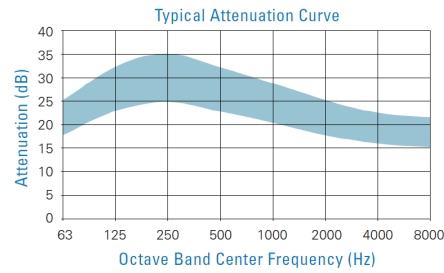
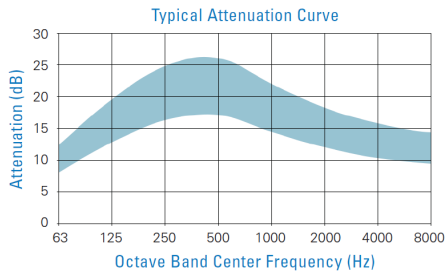
SIDE INLET, END OUTLET CONFIGURATION

2" - 3.5" NPT CONNECTIONS

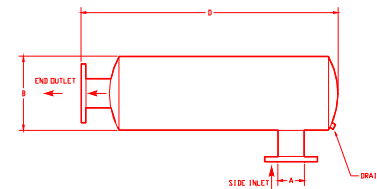
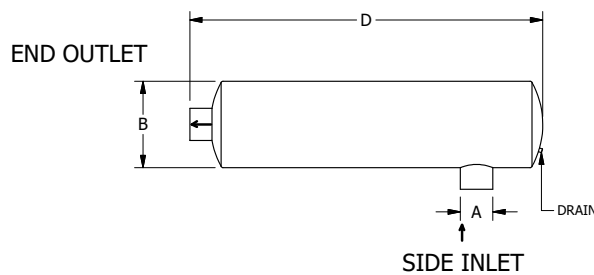
| INDUSTRIAL | | | | | RESIDENTIAL | | | | | CRITICAL | | | | | HOSPITAL | | | | |
|------------|---|---------------|---|-----|-------------|---|---|------|-----|----------|---|---|------|-----|----------|---|----|------|-----|
| P/N | A | B | D | WGT | P/N | A | B | D | WGT | P/N | A | B | D | WGT | P/N | A | B | D | WGT |
| C06582 | 3 | NOT AVAILABLE | | | C06570 | 3 | 8 | 29.0 | 32 | C06556 | 3 | 8 | 40.6 | 45 | C06732 | 3 | 12 | 42.5 | 70 |

4" - 12" 150# ANSI FLANGE

| INDUSTRIAL | | | | | RESIDENTIAL | | | | | CRITICAL | | | | | HOSPITAL | | | | |
|------------|----|----|------|-----|-------------|----|----|------|-----|----------|----|----|-------|-----|----------|----|----|-------|-----|
| P/N | A | B | D | WGT | P/N | A | B | D | WGT | P/N | A | B | D | WGT | P/N | A | B | D | WGT |
| C06584 | 4 | 10 | 29.5 | 45 | C06572 | 4 | 10 | 41.5 | 61 | C06558 | 4 | 10 | 53.5 | 83 | C06734 | 4 | 14 | 56.0 | 122 |
| C06585 | 5 | 12 | 41.6 | 687 | C06573 | 5 | 12 | 54.0 | 91 | C06559 | 5 | 12 | 65.6 | 117 | C06735 | 5 | 18 | 66.5 | 176 |
| C06586 | 6 | 12 | 41.6 | 74 | C06574 | 6 | 12 | 54.0 | 98 | C06560 | 6 | 12 | 65.6 | 131 | C06736 | 6 | 18 | 66.5 | 184 |
| C06587 | 8 | 18 | 54.5 | 142 | C06575 | 8 | 18 | 66.5 | 177 | C06561 | 8 | 18 | 90.5 | 235 | C06737 | 8 | 26 | 93.5 | 394 |
| C06588 | 10 | 22 | 69.0 | 217 | C06576 | 10 | 22 | 81.0 | 284 | C06562 | 10 | 22 | 105.0 | 342 | C06738 | 10 | 30 | 108.0 | 696 |



DIMENSIONS ARE IN INCHES



NOTES:

1. DUAL SHELL DESIGN TO ELIMINATE SHELL RADIATED NOISE AND INCREASE DURABILITY.
2. CARBON STEEL CONSTRUCTION.
3. COATED WITH SATIN BLACK PAINT RATED TO 1200°F
4. CONNECTIONS:
 - MALE NPT ON 3.0" ONLY
 - 125/150# ANSI FLANGES
5. EQUIPPED WITH PORT PLUGGED DRAIN.
6. ALL WELDED CONSTRUCTION.

| | | | | |
|--|---------------------|--|------------------|--------------------------------|
| THIS DRAWING AND THE INFORMATION HEREON ARE OUR PROPERTY AND MAY BE USED BY OTHERS ONLY AS AUTHORIZED BY US. UNPUBLISHED - ALL RIGHTS RESERVED UNDER THE COPYRIGHT LAWS. | | CONTROLLED DRAWING | CLARKE | Fire Protection Products, Inc. |
| DRWN: DMPOTTER | DATE: 7/22/1992 | NAME: SILENCER, EXHAUST (END INLET, END OUTLET) & (SIDE INLET, END OUTLET) | | |
| ENGR: DMPOTTER | MATERIAL: SEE NOTES | PART NO: D451 | | |
| FABRICATION TOLERANCE: | | ASSEMBLY: SILENCERS | SCALE: NTS | |
| DECIMAL: ±0.005 | INCH: ±0.010 | SIMILAR TO: N/A | UNITS: MM [INCH] | |
| X.X: ±1.5 | ±0.12 | | MM [INCH] | |
| X.XX: ±0.075 | ±0.06 | | | |
| ANGULAR: ±1/2° | | | | |
| | | PAGE 2 OF 2 | | |