



WFA Large Series

ASME Multi-Purpose Expansion Tank

Full Acceptance

Features:

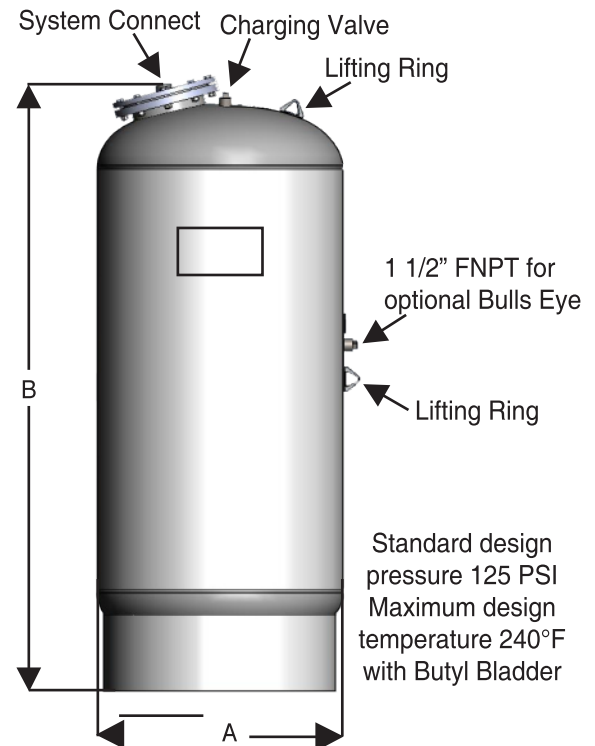
- Constructed in accordance with ASME Section VIII, Division I, Latest Edition
- Fully removable and replaceable heavy-duty Butyl rubber bladder
- NSF Approved Bladder
- Fully Adjustable Field Air Charging
- Factory Air Charged to 12 P.S.I.
- Primed Exterior

Optional Features:

- Higher working pressures available
- Trimmed for Potable Water
- "Bulls Eye" sight glass
- Seismic mounting (clips or legs)
- EPDM Bladder Material
- Higher pressures available upon request
Tank dimensions will not change
- Painted Exterior, Epoxy Coatings

All packaging materials, thread protectors, plastic plugs and caps must be removed before installation.

Dimensions are subject to change without notice, please confirm actual dimensions with factory at time of order.



PENTAIR PART NUMBER	PART NUMBER	ACCEPTANCE VOLUME	DIAMETER A (IN.)	HEIGHT B (IN.)	SYSTEM CONNECT (IN.)	WEIGHT (LBS)	WORKING PRESSURE
8362000087	WFA-1000	271	36	79 1/2	1 1/2	790	125
8362001087	WFA-1200	324	36	92	1 1/2	1020	125
8362002087	WFA-1400	377	36	102 1/2	1 1/2	1020	125
8362003087	WFA-1600	422	48	76 1/2	1 1/2	1380	125
8362004087	WFA-2000	528	48	88 1/2	1 1/2	1650	125
8362005087	WFA-2500	660	48	101	2	1435	125
8362006087	WFA-3000L	792	48	120 1/2	2	1550	125
8362007087	WFA-3000S	792	60	80	2	2169	125
8362008087	WFA-4000	1056	60	100 1/2	2	2638	125
8362009087	WFA-5000	1320	60	124	2	3246	125
RTF	WFA-7500	1980	72	130	3	4005	125
RTF	WFA-10000	2640	72	167	3	4845	125
RTF	WFA-15000	3963	72	244	3	5925	125



2701 W. Concord Street
Broken Arrow, Ok 74012

Toll Free: 866-204-5229 | PH: 918-317-0401 | FAX: 918-317-0407
www.wheatleyhvac.com | sales@globalflowproducts.com



USE:

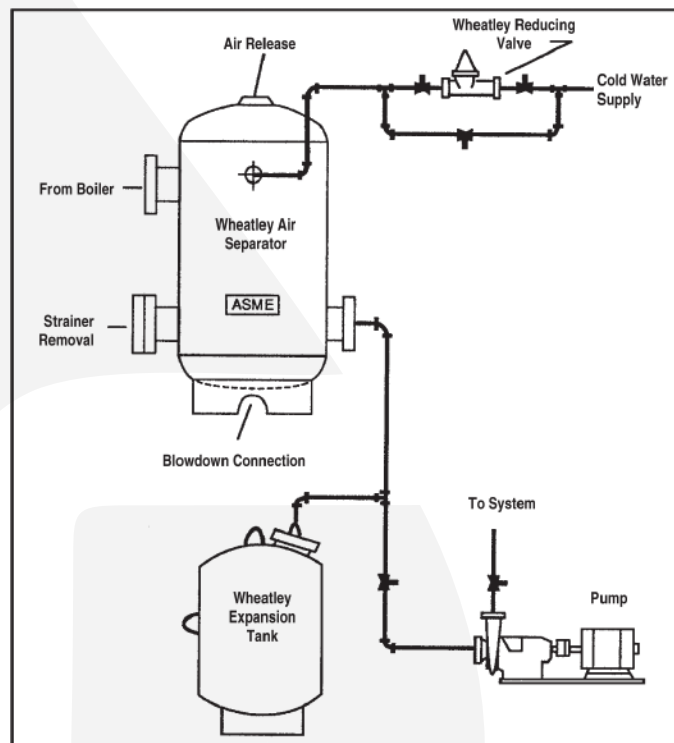
Designed to absorb expansion of fluids in typical hydronic systems. The WFA Tank is designed for pressure boost systems as well as typical cooling and heating applications. Bladder material is suitable for hot water applications. Installation of the tank will help eliminate constant pump use, prolonging pump life and unnecessary blowing of relief valves.

Specifications:

Furnish and install and shown on plans, American Wheatley WFA series, full acceptance expansion tank. Tank shall be constructed of carbon steel in accordance with ASME Section VIII, Division 1, latest edition. Tank shall incorporate a removable and replaceable heavy duty butyl bladder. Tank shall be supplied with 12 psi factory air charge. Tanks shall be supplied on standard base ring unless otherwise specified. Tanks shall be constructed and ASME stamped for 125 psi working pressure at 240°F. Tanks shall be supplied with exterior high grade red oxide primer finish. Vertical or horizontal installation is acceptable. Non-replaceable diaphragm type tanks are not acceptable.

Typical Piping Details

With Bladder Type Tanks (WFA/WPA Series)



2701 W. Concord Street
Broken Arrow, Ok 74012
Toll Free: 866-204-5229 | PH: 918-317-0401 | FAX: 918-317-0407
www.wheatleyhvac.com | sales@globalflowproducts.com