



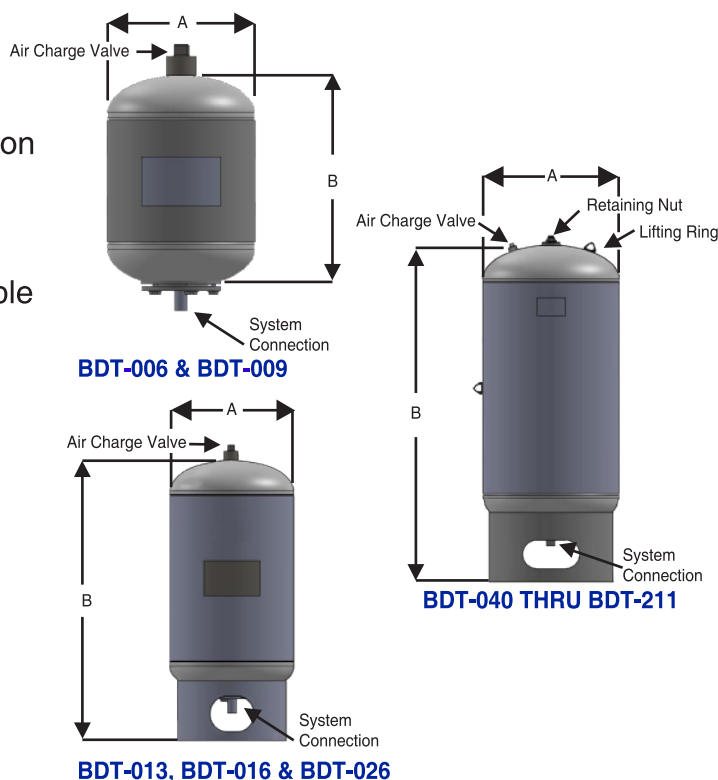
BDT Series ASME “Multi-Purpose” Expansion Tank

Features:

- Constructed in accordance with ASME Section VIII, Division I, Latest Edition
- Stainless Steel System Connection
- EPDM Bladder
- Full Acceptance Bladder Design / Replaceable
- Factory Air Charged to 12 P.S.I.
- Maximum Temperature 280°F Intermittent
- Constructed of NSF 61 Compliant Materials
- Primed Exterior

Optional Features:

- Higher working pressures available
- Top entry
- “Bulls Eye” sight glass
- Seismic mounting (clips or legs)
- Painted Exterior, Epoxy Coatings



PENTAIR PART NUMBER	PART NUMBER	ACCEPTANCE VOLUME	DIAMETER A (IN.)	HEIGHT B (IN.)	SYSTEM CONNECT (IN.)	WEIGHT (LBS)	WORKING PRESSURE
8362010087	BDT-006	6 GAL	12	12	3/4	24	150
8362011087	BDT-009	9	12	17	3/4	28	150
8362012087	BDT-013	13	14	28	3/4	50	150
8362013087	BDT-016	16	14	32	3/4	65	150
8362014087	BDT-026	26	16	40	3/4	98	150
8362015087	BDT-040	40	20	41	1	140	150
8362016087	BDT-060	60	24	48	1 1/2	220	150
8362017087	BDT-080	80	24	50	1 1/2	235	150
8362018087	BDT-112	112	30	52	1 1/2	273	150
8362019087	BDT-135	135	30	59	1 1/2	340	150
8362020087	BDT-162	162	30	61	1 1/2	360	150
8362021087	BDT-185	185	30	80	1 1/2	545	200
8362022087	BDT-211	211	32	71	1 1/2	480	150

All packaging materials, thread protectors, plastic plugs and caps must be removed before installation. Dimensions are subject to change without notice, please confirm actual dimensions with factory at time of order.



2701 W. Concord Street
Broken Arrow, Ok 74012
Toll Free: 866-204-5229 | PH: 918-317-0401 | FAX: 918-317-0407
www.wheatleyhvac.com | sales@globalflowproducts.com



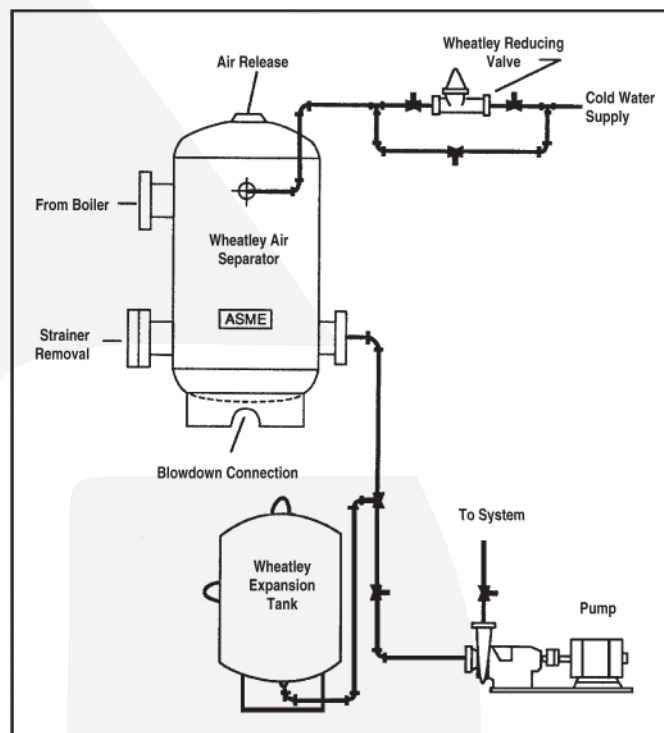
USE:

Designed to absorb expansion of fluids in typical hydronic systems. The BDT Tank is designed for pressure boost systems as well as typical cooling and heating applications. Bladder material is suitable for hot water applications. Installation of the tank will help eliminate constant pump use, prolonging pump life and unnecessary blowing of relief valves.

Specifications:

Furnish and install and shown on plans, American Wheatley BDT series, full acceptance expansion tank. Tank shall be constructed of carbon steel in accordance with ASME Section VIII, Division 1, latest edition. Tank shall incorporate a removable and replaceable heavy duty EPDM bladder. Tank shall be supplied with 12 psi factory air charge. Tanks shall be supplied on standard base ring unless otherwise specified. Tanks shall be constructed and ASME stamped for 150 psi working pressure at 240°F. Tanks shall be supplied with exterior high grade red oxide primer finish. Vertical or horizontal installation is acceptable. Non-replaceable diaphragm type tanks are not acceptable.

Typical Piping Details With Bladder Type Tanks (BDT Series)



2701 W. Concord Street
Broken Arrow, Ok 74012
Toll Free: 866-204-5229 | PH: 918-317-0401 | FAX: 918-317-0407
www.wheatleyhvac.com | sales@globalflowproducts.com