

MRS-600HE-II HIGH EFFICIENCY REVERSE OSMOSIS SYSTEM

System Part Number: EV9970-48



SYSTEM DESCRIPTION

The **MRS-600HE-II** system is a high output, high-efficiency configurable water filtration system that delivers RO and blended quality filtered water for multiple foodservice applications.

FEATURES • BENEFITS

- ◆ Dual post filtration cartridges reduce sediment, chlorine taste & odors, and other contaminants that can adversely affect the taste of beverages
- ◆ Reduces incoming water rejection from 80% to 20% to help minimize water and utility costs
- ◆ Reduces limescale buildup that can cause downtime and increased maintenance costs*
- ◆ NSF/ANSI Standard 58 certified to reduce TDS

*Not performance tested or certified by NSF

APPLICATIONS

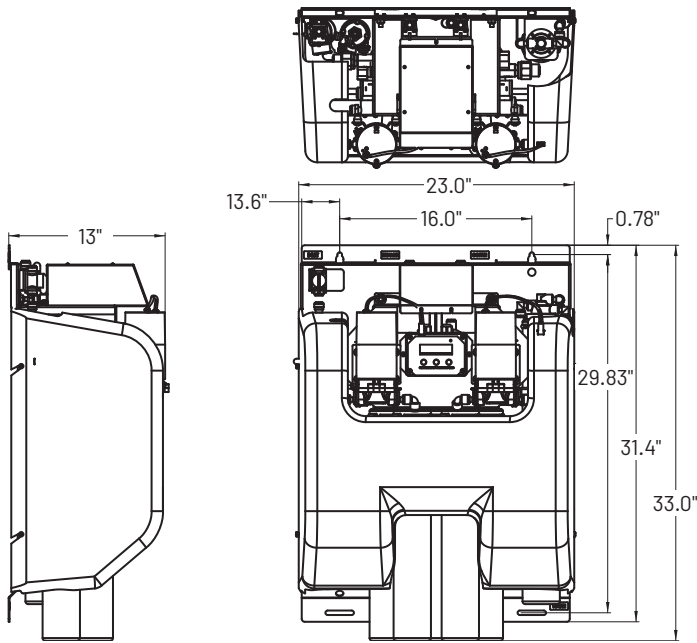
- ◆ Combi ovens
- ◆ Steamers
- ◆ Espresso
- ◆ Coffee
- ◆ Ice

INSTALLATION TIPS

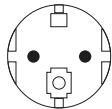
- ◆ Choose a mounting location suitable to support the weight of the system while operating.
- ◆ Delimiting of existing water-using equipment is recommended.
- ◆ Never use a saddle valve for connection.
- ◆ Use 3/8" (9.5 mm) minimum water line.
- ◆ Install vertically and allow 2 1/2 (6.35 cm) clearance on all four (4) sides of the unit for easy removal and replacement.
- ◆ The product water tubing/piping and associated fittings connecting the RO product outlet to the equipment being serviced should be suitable for use with high-purity water.
- ◆ Change RO membrane cartridge and filter cartridges on a regular one (1) year preventative maintenance program.
- ◆ Change cartridges when capacity is reached or pressure decreases.
- ◆ Always flush the filter cartridge at the time of installation and cartridge change.
- ◆ For more details, see the installation, operation, and maintenance guide included with the system.

MRS-600HE-II HIGH EFFICIENCY REVERSE OSMOSIS SYSTEM

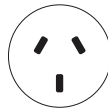
EV9970-48



Power plug options



CEE 7/7 "Schuko"



GB 2009
AS 3112

SPECIFICATIONS

System

Overall Dimensions

33" H x 23" W x 13" D
(83.8 cm x 58.4 cm x 33 cm)
Add 2 1/2" (6.35 cm) on all four
(4) sides for easy removal and
replacement.

Connections

Inlet: 3/8" OD tube
Outlet: 3/8" OD tube
Wastewater: 3/8" OD tube

Operating Pressure

25 - 80 psi (1.72 - 5.52 bar),
non-shock pressure below 50 psi
(3.45 bar) may affect blend system
performance.

Minimum Static Pressure

100 psi (6.89 bar), non-shock

Minimum Water Supply

1.5 gpm (5.7 Lpm)

Water Temperature

40-100°F (4 - 38°C)

Shipping Weight

100 lbs (45.4 kgs)

System

Operating Weight

110 lbs (49.9 kgs), not including
external storage tanks

Available Electrical Connections

EV9970-48: Europe 220-240

Performance

Daily Production Rate

Up to 600 gpd (2,271 Lpd) (plus tap
water addition for processor with
blend). The total daily production
rate will vary based on tap water
TDS, RO percent rejection, and
desired blend water TDS. Contact
Pentair for assistance estimating
this total.

Service Flow Rate

Dependent on water pressure in
the storage tank and line size(s) to
equipment.

REPLACEMENT CARTRIDGES

Model	Qty	Description	Part No
7FS-BW	3	Prefilter	EV9627-16
7F	1	Post-filter	EV9654-10
MR-600-1	1	RO membrane	EV9627-23
MC ²	2	Post-filter	EV9612-56

Feed Water Chemistry

Feed TDS	Up to 1000 ppm	Turbidity	<1.0 NTU
Feed pH	5-10	Manganese	<0.05 mg/L max
Hardness*	12 grains/gal or less	Hydrogen Sulfide	0.00 mg/L
Free Chlorine	<3 mg/L	Silica	<20 ppm
Iron	<0.1 mg/L		

* For water outside of these parameters call Pentair Customer Service.

For Pentair Everpure Product Warranties visit:
<http://pentair.com/assets/foodservice-warranty>

The contaminants or other substances removed or reduced by this drinking water system are not necessarily in your water. Do not use with water that is microbiologically unsafe or of unknown quality without adequate disinfection before or after the system.

Since the conditions under which our products may be used are beyond our control, we cannot accept any liability with respect to the improper installation, application and/or use of our products.



System Tested and Certified
by NSF International against
NSF/ANSI Standard 58 for the
reduction of:

STANDARD NO. 58 –
Total Dissolved Solids (TDS)



1040 Muirfield Drive | Hanover Park, IL 60133 | 800.942.1153 (US Only) 630.307.3000 Main | cseverpure@pentair.com | foodservice.pentair.com

All indicated Pentair trademarks and logos are property of Pentair. Third party registered and unregistered trademarks and logos are the property of their respective owners.

©2023 Pentair. All rights reserved.

EV9970-48 JL23